

Courtesy Of Michele A Wuerch Of MaxWell Polaris

\$320,000 - 1948 Bonneville Drive, Sherwood Park

MLS® #E4448182

\$320,000

3 Bedroom, 2.00 Bathroom, 926 sqft
Single Family on 0.00 Acres

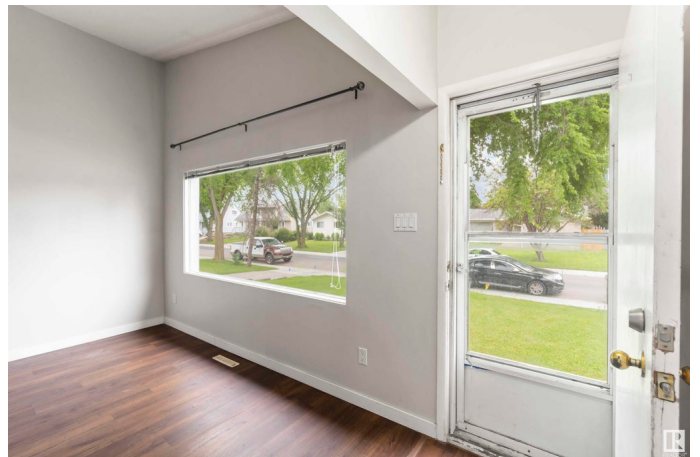
Broadmoor, Sherwood Park, AB

Broadmoor Half Duplex with a convenient SEPARATE SIDE ENTRY. Features 2 spacious bedrooms up, 4 pc bathroom, a large vaulted living room with picture window, a 3 pc kitchen & nook. This home would make a great cash flowing basement suite without much work (NOT CURRENTLY SUITED). The basement is partially finished with a bedroom, 3 pc bathroom, laundry, a great room and cold storage. Roof was replaced 2016, Furnace 2017. The fully fenced back yard has privacy slats, a storage shed, small fire pit, raised garden beds and an apple tree. walking distance to golf, arenas, and Festival Place.

Built in 1963

Essential Information

MLS® #	E4448182
Price	\$320,000
Bedrooms	3
Bathrooms	2.00
Full Baths	2
Square Footage	926
Acres	0.00
Year Built	1963
Type	Single Family
Sub-Type	Half Duplex
Style	Raised Bungalow



Status Active

Community Information

Address 1948 Bonneville Drive
Area Sherwood Park
Subdivision Broadmoor
City Sherwood Park
County ALBERTA
Province AB
Postal Code T8A 0Y2

Amenities

Amenities Fire Pit, Vaulted Ceiling, See Remarks
Parking 2 Outdoor Stalls

Interior

Appliances Dryer, Oven-Built-In, Refrigerator, Storage Shed, Stove-Gas, Washer
Heating Forced Air-1, Natural Gas
Stories 2
Has Basement Yes
Basement Full, Partially Finished

Exterior

Exterior Wood, Stucco, Vinyl
Exterior Features Fenced, Flat Site, Fruit Trees/Shrubs, Golf Nearby
Roof Asphalt Shingles
Construction Wood, Stucco, Vinyl
Foundation Concrete Perimeter

Additional Information

Date Listed July 17th, 2025
Days on Market 1
Zoning Zone 25

DATA IS DEEMED RELIABLE BUT IS NOT GUARANTEED ACCURATE BY THE REALTORS® ASSOCIATION OF EDMONTON. COPYRIGHT 2025 BY THE REALTORS® ASSOCIATION OF EDMONTON. ALL RIGHTS RESERVED. Trademarks are owned or controlled by the Canadian Real Estate Association (CREA) and identify real estate professionals who are members of CREA (REALTOR®, REALTORS®) and/or the quality of services they provide (MLS®, Multiple Listing Service®)

Listing information last updated on July 17th, 2025 at 11:47pm MDT