

\$499,000 - 17103 121 Street, Edmonton

MLS® #E4448259

\$499,000

4 Bedroom, 3.50 Bathroom, 1,585 sqft

Single Family on 0.00 Acres

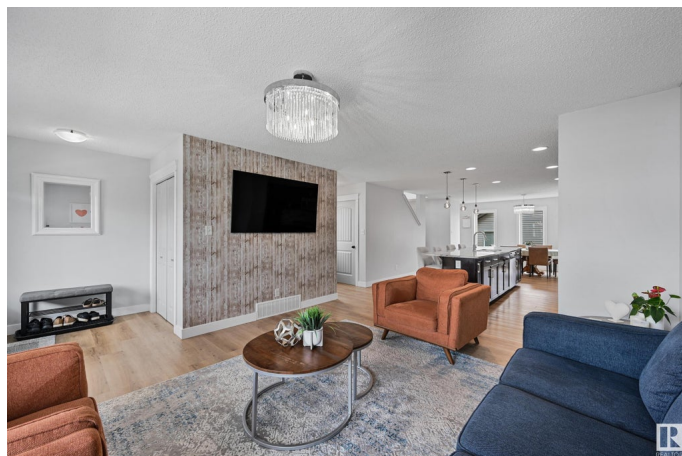
Rapperswill, Edmonton, AB

Welcome to this 4 Bedroom Home with a brand new Professionally Finished Basement with All Permits in Place! Your open concept main floor has upgrades like Central Air Conditioning, large windows, huge island with stone countertop, stainless steel appliances, custom back entrance storage and more. Upstairs, The Master Bedroom with Vaulted Ceilings includes an Ensuite and a great Walk In Closet, plus two additional bedrooms, another bathroom and convenient Upstairs Laundry Room! Downstairs is the perfect professionally finished basement with the 4th bedroom, Bonus Room, another Full Bathroom and Two Storage Rooms. You'll love the fully fenced and landscaped yard, which is perfect for pets and kids - plus a great double detached garage! Welcome to one of North Edmonton's Top Communities - seconds to Shopping, Transit, The Henday, a Playground and Multiple Lakes! Welcome Home!

Built in 2013

Essential Information

MLS® #	E4448259
Price	\$499,000
Bedrooms	4
Bathrooms	3.50
Full Baths	3



Half Baths	1
Square Footage	1,585
Acres	0.00
Year Built	2013
Type	Single Family
Sub-Type	Detached Single Family
Style	2 Storey
Status	Active

Community Information

Address	17103 121 Street
Area	Edmonton
Subdivision	Rapperswill
City	Edmonton
County	ALBERTA
Province	AB
Postal Code	T5X 0H4

Amenities

Amenities	Air Conditioner, Front Porch, Smart/Program. Thermostat, Television Connection, Vaulted Ceiling, HRV System
Parking Spaces	4
Parking	Double Garage Detached

Interior

Interior Features	ensuite bathroom
Appliances	Air Conditioning-Central, Dishwasher-Built-In, Dryer, Garage Control, Garage Opener, Microwave Hood Fan, Refrigerator, Stove-Electric, Washer
Heating	Forced Air-1, Natural Gas
Stories	3
Has Basement	Yes
Basement	Full, Finished

Exterior

Exterior	Wood, Stucco, Vinyl
Exterior Features	Back Lane, Fenced, Flat Site, Landscaped, Level Land, Playground Nearby, Public Swimming Pool, Public Transportation, Schools, Shopping Nearby
Roof	Asphalt Shingles

Construction	Wood, Stucco, Vinyl
Foundation	Concrete Perimeter

School Information

Elementary	St. Lucy, Baturyn
Middle	Mary Butterworth, Eliz Fin
High	O'Leary, Queen E

Additional Information

Date Listed	July 17th, 2025
Days on Market	6
Zoning	Zone 27

DATA IS DEEMED RELIABLE BUT IS NOT GUARANTEED ACCURATE BY THE REALTORS® ASSOCIATION OF EDMONTON. COPYRIGHT 2025 BY THE REALTORS® ASSOCIATION OF EDMONTON. ALL RIGHTS RESERVED.Trademarks are owned or controlled by the Canadian Real Estate Association (CREA) and identify real estate professionals who are members of CREA (REALTOR®, REALTORS®) and/or the quality of services they provide (MLS®, Multiple Listing Service®)

Listing information last updated on July 23rd, 2025 at 10:32am MDT