

\$425,000 - 11042 76 Street, Edmonton

MLS® #E4448402

\$425,000

4 Bedroom, 2.00 Bathroom, 1,325 sqft
Single Family on 0.00 Acres

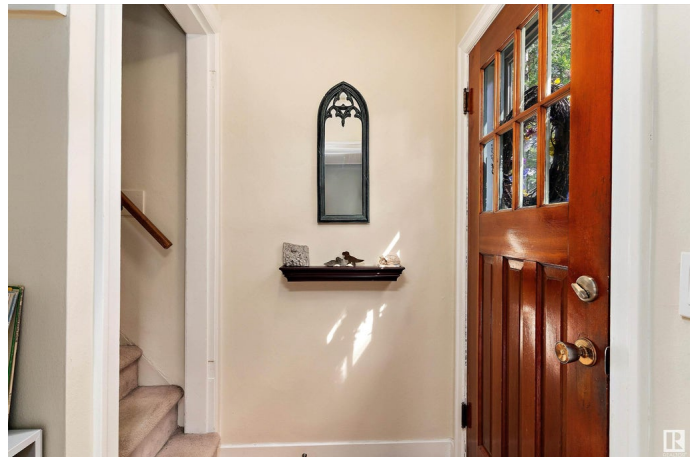
Cromdale, Edmonton, AB

Welcome to this charming 1.5-storey home in desirable Cromdale/Virginia Park, backing onto green space with quick access to the ravine, river valley, and Concordia. Featuring 4 bedrooms and 2 full baths, this home offers a cozy yet spacious layout with tons of natural light. The main floor boasts hardwood floors and a beautiful kitchen with rich wood cabinetry, large island and stainless steel appliances including a gas stove. The main bath features Italian tile and a lovely, deep soaker tub for ultimate relaxation. Two bedrooms on the main, two up, plus a second full bath. The basement includes a large laundry room and clean, unfinished space. Enjoy the big backyard with a large deck and lush green grass, perfect for hosting and enjoying summer days outside. Steps to parks, schools, coffee shop, grocery, downtown, and transit!

Built in 1947

Essential Information

MLS® #	E4448402
Price	\$425,000
Bedrooms	4
Bathrooms	2.00
Full Baths	2
Square Footage	1,325



Acres	0.00
Year Built	1947
Type	Single Family
Sub-Type	Detached Single Family
Style	1 and Half Storey
Status	Active

Community Information

Address	11042 76 Street
Area	Edmonton
Subdivision	Cromdale
City	Edmonton
County	ALBERTA
Province	AB
Postal Code	T5B 2C6

Amenities

Amenities	Deck
Parking	Single Garage Detached

Interior

Appliances	Dishwasher-Built-In, Dryer, Garage Control, Garage Opener, Refrigerator, Stove-Gas, Washer, Window Coverings
Heating	Forced Air-1, Natural Gas
Stories	2
Has Basement	Yes
Basement	Full, Unfinished

Exterior

Exterior	Wood, Vinyl
Exterior Features	Back Lane, Backs Onto Park/Trees, Fenced, Golf Nearby, Landscaped, Park/Reserve, Playground Nearby, Public Transportation, Ravine View, Schools, Shopping Nearby
Roof	Asphalt Shingles
Construction	Wood, Vinyl
Foundation	Concrete Perimeter

School Information

Elementary	Virginia Park, St Alphonsus
Middle	Highlands, St Alphonsus

High Eastglen, St Joseph

Additional Information

Date Listed July 17th, 2025

Days on Market 6

Zoning Zone 09

DATA IS DEEMED RELIABLE BUT IS NOT GUARANTEED ACCURATE BY THE REALTORS® ASSOCIATION OF EDMONTON. COPYRIGHT 2025 BY THE REALTORS® ASSOCIATION OF EDMONTON. ALL RIGHTS RESERVED.Trademarks are owned or controlled by the Canadian Real Estate Association (CREA) and identify real estate professionals who are members of CREA (REALTOR®, REALTORS®) and/or the quality of services they provide (MLS®, Multiple Listing Service®)

Listing information last updated on July 23rd, 2025 at 10:32am MDT