

Courtesy Of Brent Anderson Of Century 21 Masters

\$235,000 - 307 11915 106 Avenue, Edmonton

MLS® #E4449174

\$235,000

2 Bedroom, 2.00 Bathroom, 1,076 sqft

Condo / Townhouse on 0.00 Acres

Queen Mary Park, Edmonton, AB

Welcome to Queen Mary Park, where city living meets comfort + convenience. This lovely, top-floor unit is ready to welcome new owners, offering a blend of style, functionality, + ideal location. Primary bedroom complete with a 3-piece ensuite. Nicely sized second bedroom with access to a 4-piece bath, perfect for family, guests, or a home office. The updated kitchen is a culinary enthusiast's dream, boasting an eat-up counter + ample counter + dining space. The spacious living room offers access to the terrace where you can enjoy your morning coffee while taking in the fresh air + lovely views. Whether you are a first-time homebuyer, an investor, or someone seeking a safe + warm home for a young adult attending Grant MacEwan, NAIT, or the UofA, this unit offers a fantastic opportunity. It's an ideal starting point for a new chapter, providing both comfort + a strategic location. 2 heated underground parking stalls, and storage cage. Beautiful grounds + walking trails. Condo fee is \$664.19

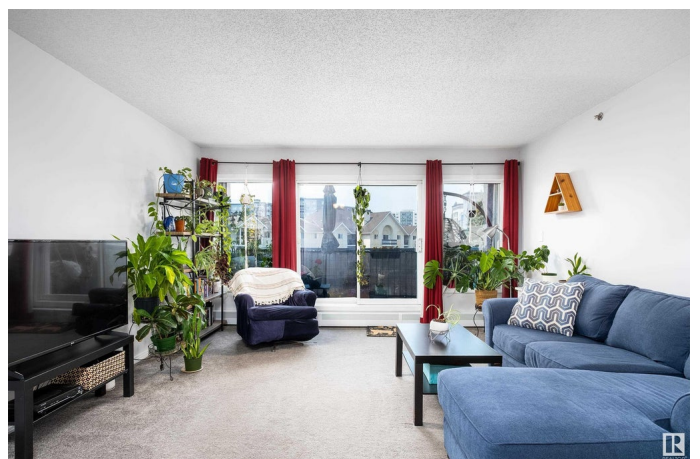
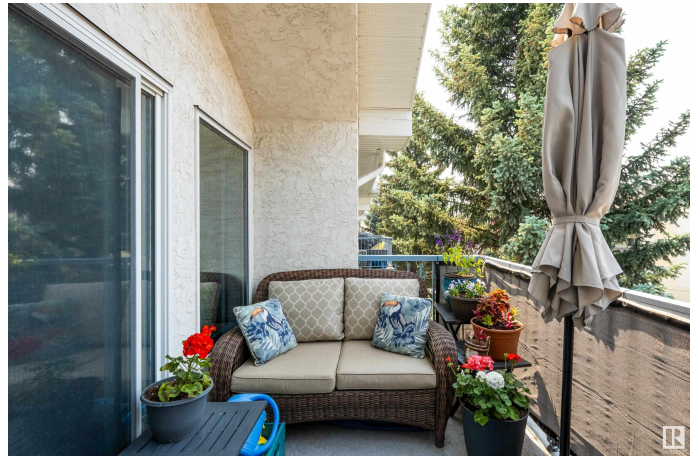
Built in 1993

Essential Information

MLS® # E4449174

Price \$235,000

Bedrooms 2



Bathrooms	2.00
Full Baths	2
Square Footage	1,076
Acres	0.00
Year Built	1993
Type	Condo / Townhouse
Sub-Type	Lowrise Apartment
Style	Single Level Apartment
Status	Active

Community Information

Address	307 11915 106 Avenue
Area	Edmonton
Subdivision	Queen Mary Park
City	Edmonton
County	ALBERTA
Province	AB
Postal Code	T5H 0S2

Amenities

Amenities	Deck, Parking-Visitor
Parking Spaces	2
Parking	Parkade, Underground

Interior

Interior Features	ensuite bathroom
Appliances	Dishwasher-Built-In, Dryer, Microwave Hood Fan, Refrigerator, Stove-Electric, Washer, Window Coverings
Heating	Baseboard, Natural Gas
# of Stories	3
Stories	1
Has Basement	Yes
Basement	None, No Basement

Exterior

Exterior	Wood, Stucco
Exterior Features	Public Transportation
Roof	Asphalt Shingles
Construction	Wood, Stucco

Foundation Concrete Perimeter

Additional Information

Date Listed July 23rd, 2025
Days on Market 4
Zoning Zone 08
Condo Fee \$664

DATA IS DEEMED RELIABLE BUT IS NOT GUARANTEED ACCURATE BY THE REALTORS® ASSOCIATION OF EDMONTON. COPYRIGHT 2025 BY THE REALTORS® ASSOCIATION OF EDMONTON. ALL RIGHTS RESERVED.Trademarks are owned or controlled by the Canadian Real Estate Association (CREA) and identify real estate professionals who are members of CREA (REALTOR®, REALTORS®) and/or the quality of services they provide (MLS®, Multiple Listing Service®)
Listing information last updated on July 27th, 2025 at 2:02pm MDT