

\$449,000 - 553 Glenridding Ravine Drive, Edmonton

MLS® #E4449502

\$449,000

3 Bedroom, 2.00 Bathroom, 1,521 sqft
Single Family on 0.00 Acres

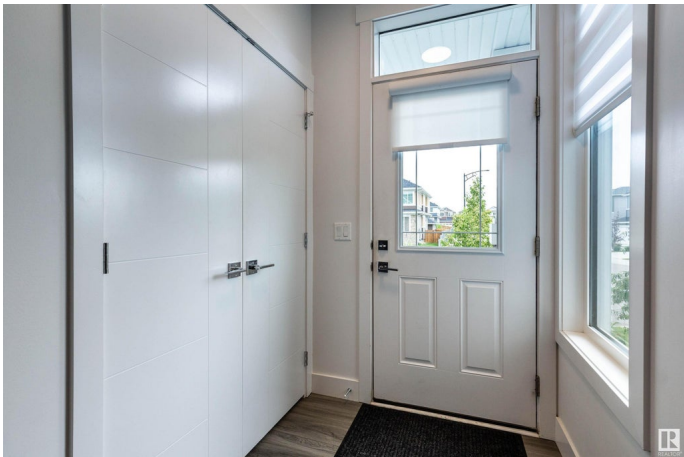
Glenridding Ravine, Edmonton, AB

Nestled away between green spaces and farmland this END-UNIT residential attached townhouse in the neighborhood of Glenridding is minutes away from the amenities of Chapelle and Windemere. The open plan main floor is spacious and welcoming, making the living and kitchen/dining areas the heart of family life or entertaining friends. Gorgeous kitchen, 9-foot ceilings, 2-pc bath and vinyl flooring on the main, with carpet upstairs. Upstairs is the massive master bedroom and ensuite, 2 more bedrooms, another full bath, a bonus room, and laundry area. The basement is perfect for development to meet your dreams. Unwind in summer with family on your amazing deck in the cozy backyard with south-facing exposure. Double detached garage.

Built in 2020

Essential Information

MLS® #	E4449502
Price	\$449,000
Bedrooms	3
Bathrooms	2.00
Full Baths	1
Half Baths	2
Square Footage	1,521
Acres	0.00



Year Built	2020
Type	Single Family
Sub-Type	Residential Attached
Style	2 Storey
Status	Active

Community Information

Address	553 Glenridding Ravine Drive
Area	Edmonton
Subdivision	Glenridding Ravine
City	Edmonton
County	ALBERTA
Province	AB
Postal Code	T6W 4P1

Amenities

Amenities	On Street Parking, Deck, No Animal Home, No Smoking Home, Secured Parking
Parking	Double Garage Detached

Interior

Interior Features	ensuite bathroom
Appliances	Dishwasher-Built-In, Dryer, Garage Control, Garage Opener, Microwave Hood Fan, Refrigerator, Stove-Electric, Washer, Window Coverings
Heating	Forced Air-1, Natural Gas
Stories	2
Has Basement	Yes
Basement	Full, Unfinished

Exterior

Exterior	Wood, Stone, Vinyl
Exterior Features	Airport Nearby, Back Lane, Fenced, Flat Site, Landscaped, Low Maintenance Landscape, Playground Nearby, Public Transportation, Schools, Shopping Nearby
Roof	Asphalt Shingles
Construction	Wood, Stone, Vinyl
Foundation	Concrete Perimeter

Additional Information

Date Listed	July 23rd, 2025
-------------	-----------------

Days on Market 4
Zoning Zone 56
HOA Fees Freq. Annually

DATA IS DEEMED RELIABLE BUT IS NOT GUARANTEED ACCURATE BY THE REALTORS® ASSOCIATION OF EDMONTON. COPYRIGHT 2025 BY THE REALTORS® ASSOCIATION OF EDMONTON. ALL RIGHTS RESERVED. Trademarks are owned or controlled by the Canadian Real Estate Association (CREA) and identify real estate professionals who are members of CREA (REALTOR®, REALTORS®) and/or the quality of services they provide (MLS®, Multiple Listing Service®)

Listing information last updated on July 26th, 2025 at 10:32pm MDT