

\$849,000 - 6403 26 St, Rural Leduc County

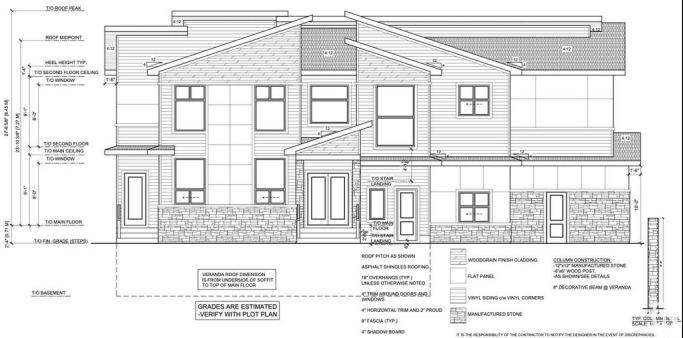
MLS® #E4449512

\$849,000

5 Bedroom, 4.00 Bathroom, 2,730 sqft
Rural on 0.14 Acres

Churchill Meadow, Rural Leduc County, AB

Welcome to this one-of-a-kind gem in the heart of Churchill Meadows, offering a rare layout and unmatched curb appeal! Situated on a massive corner lot, this stunning home boasts over 2700 sqft with triple car garage, an elegant entrance, and a grand open-to-below design that creates an airy feel right from the moment you step in. The main floor features a bedroom with a full bath. Youâ€™ll love the chefâ€™s kitchen with premium finishes, plus a f spice kitchen for added convenience. The spacious great room with soaring ceilings is perfect for entertaining. Upstairs, you'll find a luxurious primary suite with a 6-piece ensuite and a generous walk-in closet. A second master bedroom with a 4-piece ensuite, plus two additional bedrooms, another full bath, bonus room, and upstairs laundry complete this well-designed upper floor. This home blends function, luxury, and space like no otherâ€™perfect for large families. Photos are from a similar home built by the builder; actual finishes & layout may vary.



Built in 2025

Essential Information

MLS® #	E4449512
Price	\$849,000
Bedrooms	5

Bathrooms	4.00
Full Baths	4
Square Footage	2,730
Acres	0.14
Year Built	2025
Type	Rural
Sub-Type	Detached Single Family
Style	2 Storey
Status	Active

Community Information

Address	6403 26 St
Area	Rural Leduc County
Subdivision	Churchill Meadow
City	Rural Leduc County
County	ALBERTA
Province	AB
Postal Code	T4X 3A6

Amenities

Features	Carbon Monoxide Detectors, Closet Organizers, Detectors Smoke, No Animal Home, No Smoking Home, Storage-In-Suite, See Remarks, 9 ft. Basement Ceiling
----------	---

Interior

Interior Features	ensuite bathroom
Heating	Forced Air-1, Natural Gas
Fireplace	Yes
Stories	2
Has Basement	Yes
Basement	Full, Unfinished

Exterior

Exterior	Wood
Exterior Features	Airport Nearby, Corner Lot, Cul-De-Sac, Golf Nearby, Playground Nearby, Shopping Nearby, See Remarks
Construction	Wood
Foundation	Concrete Perimeter

Additional Information

Date Listed July 24th, 2025

Days on Market 55

Zoning Zone 80

DATA IS DEEMED RELIABLE BUT IS NOT GUARANTEED ACCURATE BY THE REALTORS® ASSOCIATION OF EDMONTON. COPYRIGHT 2025 BY THE REALTORS® ASSOCIATION OF EDMONTON. ALL RIGHTS RESERVED. Trademarks are owned or controlled by the Canadian Real Estate Association (CREA) and identify real estate professionals who are members of CREA (REALTOR®, REALTORS®) and/or the quality of services they provide (MLS®, Multiple Listing Service®)

Listing information last updated on September 16th, 2025 at 10:02pm MDT