

## \$239,000 - 307 6070 Schonsee Way, Edmonton

MLS® #E4449567

**\$239,000**

2 Bedroom, 2.00 Bathroom, 969 sqft

Condo / Townhouse on 0.00 Acres

Schonsee, Edmonton, AB

This updated 2 bed, 2 bath condo features NEW FLOORING throughout and 2 TITLED PARKING STALLS (1 heated underground + 1 surface stall near the entrance). The bright and expansive open-concept layout includes a warm-toned kitchen with ample cabinetry, black appliances, and a raised breakfast bar. The spacious living and dining areas offer plenty of room to relax or entertain. The primary suite boasts a MASSIVE walk-in closet and 3-piece ensuite, while the second bedroom and 4-piece bathroom are located on the opposite side of the unit for added privacy. Enjoy the covered balcony with privacy glass and natural gas BBQ hookup. Additional highlights include in-suite laundry, a fitness centre, social room, and secure underground parking. Condo fees include heat & water. Located near Lake Schonsee, parks, trails, schools, shopping, transit, and with quick access to Anthony Henday. A perfect blend of comfort, convenience, and value—this one checks all the boxes!

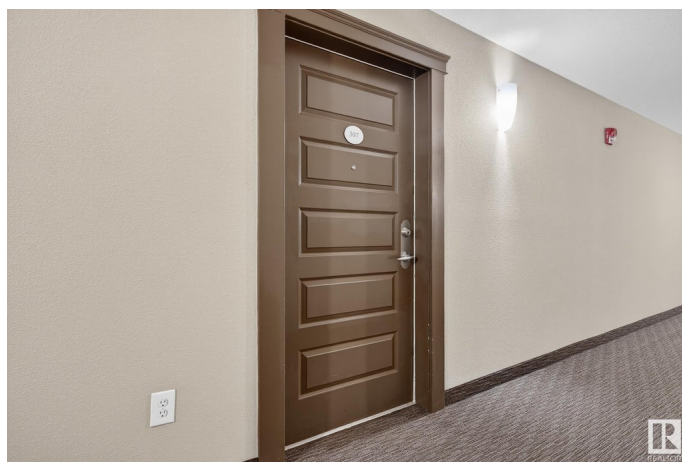
Built in 2011

### Essential Information

MLS® # E4449567

Price \$239,000

Bedrooms 2



Bathrooms	2.00
Full Baths	2
Square Footage	969
Acres	0.00
Year Built	2011
Type	Condo / Townhouse
Sub-Type	Lowrise Apartment
Style	Single Level Apartment
Status	Active

### **Community Information**

Address	307 6070 Schonsee Way
Area	Edmonton
Subdivision	Schonsee
City	Edmonton
County	ALBERTA
Province	AB
Postal Code	T5Z 0G8

### **Amenities**

Amenities	Exercise Room, Intercom, Parking-Visitor, Party Room, Secured Parking, Security Door
Parking Spaces	2
Parking	Stall, Underground

### **Interior**

Interior Features	ensuite bathroom
Appliances	Dishwasher-Built-In, Refrigerator, Stacked Washer/Dryer, Stove-Electric
Heating	Baseboard, Natural Gas
# of Stories	4
Stories	1
Has Basement	Yes
Basement	None, No Basement

### **Exterior**

Exterior	Wood, Stone, Vinyl
Exterior Features	Public Transportation, Schools, Shopping Nearby
Roof	Asphalt Shingles
Construction	Wood, Stone, Vinyl

Foundation                      Concrete Perimeter

**Additional Information**

Date Listed                      July 24th, 2025  
Days on Market                3  
Zoning                              Zone 28  
Condo Fee                        \$466

DATA IS DEEMED RELIABLE BUT IS NOT GUARANTEED ACCURATE BY THE REALTORS® ASSOCIATION OF EDMONTON. COPYRIGHT 2025 BY THE REALTORS® ASSOCIATION OF EDMONTON. ALL RIGHTS RESERVED.Trademarks are owned or controlled by the Canadian Real Estate Association (CREA) and identify real estate professionals who are members of CREA (REALTOR®, REALTORS®) and/or the quality of services they provide (MLS®, Multiple Listing Service®)  
Listing information last updated on July 27th, 2025 at 10:17am MDT