

\$259,900 - 119 12111 51 Avenue, Edmonton

MLS® #E4449624

\$259,900

3 Bedroom, 2.00 Bathroom, 1,299 sqft
Condo / Townhouse on 0.00 Acres

Malmo Plains, Edmonton, AB

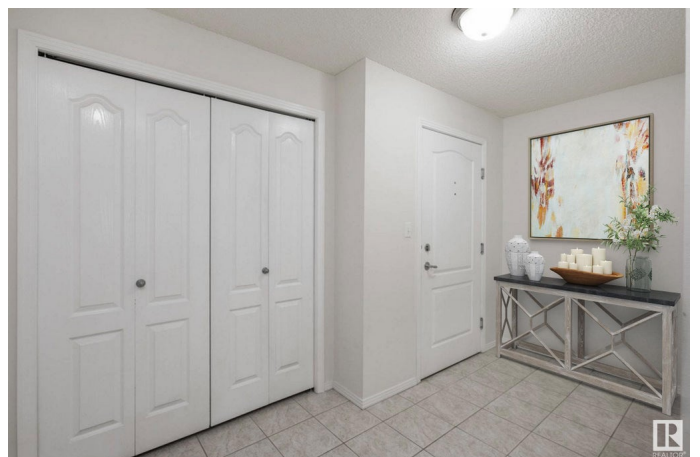
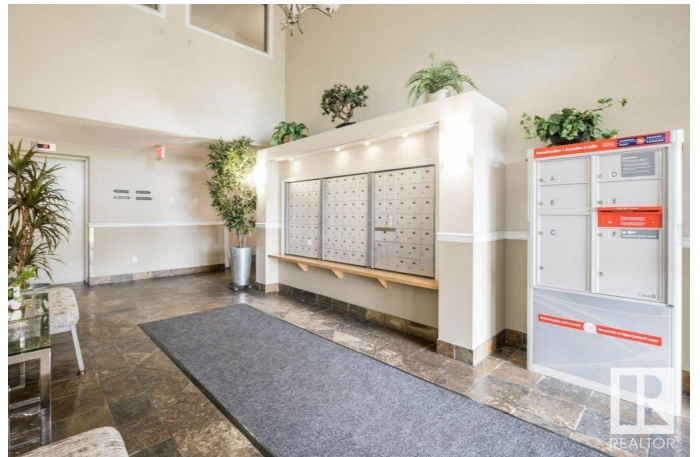
Perfect for downsizers, first-time buyers, or investorsâ€™ spacious, convenient, and in a prime location!-This 1,300 sq. ft. main floor CORNER unit in desirable Malmo Plainsâ€™easy access to the U of A, Southgate, LRT, & more! Features include a large Primary Suite w/generous closet space, 3-piece ensuite & access to the private patio - plus 2 additional generous sized bedrooms (or 1 and den). The kitchen offers ample cabinetry and a centre Island open to the spacious living/great room host to a cozy gas fireplace & sliding doors to a private patio. A full 4-piece bath & in-suite laundry complete the unit. You'll love all the natural light through this unit.

Condo fees include heat, water & sewer. Included is a TITLED, oversized underground stall (13.5' x 21') with storage cage. Enjoy a secure, low-maintenance lifestyle with top-notch amenities: Car Wash Bay, Guest Suite, Fitness Centre & Social Room. The complete envelope replacement now showcases stunning colors and a refreshed, contemporary curb appeal.

Built in 2004

Essential Information

MLS® #	E4449624
Price	\$259,900



Bedrooms	3
Bathrooms	2.00
Full Baths	2
Square Footage	1,299
Acres	0.00
Year Built	2004
Type	Condo / Townhouse
Sub-Type	Lowrise Apartment
Style	Single Level Apartment
Status	Active

Community Information

Address	119 12111 51 Avenue
Area	Edmonton
Subdivision	Malmo Plains
City	Edmonton
County	ALBERTA
Province	AB
Postal Code	T6H 6A3

Amenities

Amenities	Car Wash, Exercise Room, Guest Suite, Parking-Visitor, Secured Parking, Storage-Locker Room, Workshop
Parking Spaces	1
Parking	Heated, Over Sized, Parkade, Underground

Interior

Interior Features	ensuite bathroom
Appliances	Dishwasher-Built-In, Dryer, Garage Control, Hood Fan, Refrigerator, Stacked Washer/Dryer, Stove-Electric
Heating	In Floor Heat System, Natural Gas
Fireplace	Yes
Fireplaces	Glass Door
# of Stories	5
Stories	1
Has Basement	Yes
Basement	None, No Basement

Exterior

Exterior	Wood, Hardie Board Siding
Exterior Features	Public Swimming Pool, Public Transportation, Schools, Shopping Nearby, Ski Hill Nearby
Roof	Asphalt Shingles
Construction	Wood, Hardie Board Siding
Foundation	Concrete Perimeter

Additional Information

Date Listed	July 25th, 2025
Days on Market	2
Zoning	Zone 15
Condo Fee	\$601

DATA IS DEEMED RELIABLE BUT IS NOT GUARANTEED ACCURATE BY THE REALTORS® ASSOCIATION OF EDMONTON. COPYRIGHT 2025 BY THE REALTORS® ASSOCIATION OF EDMONTON. ALL RIGHTS RESERVED. Trademarks are owned or controlled by the Canadian Real Estate Association (CREA) and identify real estate professionals who are members of CREA (REALTOR®, REALTORS®) and/or the quality of services they provide (MLS®, Multiple Listing Service®)

Listing information last updated on July 27th, 2025 at 9:17am MDT