

\$434,900 - 5696 Juchli Avenue, Edmonton

MLS® #E4449733

\$434,900

3 Bedroom, 2.50 Bathroom, 1,548 sqft

Single Family on 0.00 Acres

Griesbach, Edmonton, AB

Welcome to Griesbach—one of Edmonton’s most sought-after communities, known for its scenic lakes, walking trails, parks, and rich military heritage. This 2022 Coventry-built NO CONDO FEE townhome offers approx. 1548 sq. ft. of like-new living space with timeless finishes. The main floor features vinyl plank flooring, custom lighting, an open-concept layout with a bright living room and dedicated dining area. The stylish kitchen has modern white cabinetry, quartz countertops, large island, and stainless steel appliances. A convenient 2-piece bath completes the main level. Upstairs offers 3 spacious bedrooms, including a primary suite with a 4-piece ensuite, and the added bonus of upper floor laundry. Enjoy outdoor living with a front porch, back deck, fenced yard, and double detached garage. Perfect for a growing family. Ideally located near schools, shopping, transit, and just 10 minutes to downtown—this is Griesbach living at its best.

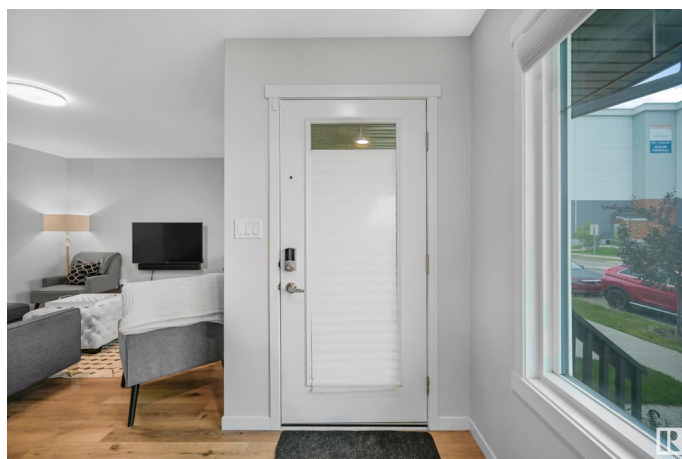
Built in 2022

Essential Information

MLS® # E4449733

Price \$434,900

Bedrooms 3



| | |
|----------------|----------------------|
| Bathrooms | 2.50 |
| Full Baths | 2 |
| Half Baths | 1 |
| Square Footage | 1,548 |
| Acres | 0.00 |
| Year Built | 2022 |
| Type | Single Family |
| Sub-Type | Residential Attached |
| Style | 2 Storey |
| Status | Active |

Community Information

| | |
|-------------|--------------------|
| Address | 5696 Juchli Avenue |
| Area | Edmonton |
| Subdivision | Griesbach |
| City | Edmonton |
| County | ALBERTA |
| Province | AB |
| Postal Code | T5E 6Y2 |

Amenities

| | |
|----------------|--------------------------------|
| Amenities | Deck, Front Porch, See Remarks |
| Parking Spaces | 2 |
| Parking | Double Garage Detached |

Interior

| | |
|-------------------|---|
| Interior Features | ensuite bathroom |
| Appliances | Dishwasher-Built-In, Garage Control, Garage Opener, Microwave Hood Fan, Refrigerator, Stacked Washer/Dryer, Stove-Electric, Window Coverings, TV Wall Mount |
| Heating | Forced Air-1, Natural Gas |
| Stories | 2 |
| Has Basement | Yes |
| Basement | Full, Unfinished |

Exterior

| | |
|-------------------|--|
| Exterior | Wood, Stone, Vinyl |
| Exterior Features | Back Lane, Fenced, Low Maintenance Landscape, Playground Nearby, Public Transportation, Schools, Shopping Nearby |

| | |
|--------------|--------------------|
| Roof | Asphalt Shingles |
| Construction | Wood, Stone, Vinyl |
| Foundation | Concrete Perimeter |

School Information

| | |
|------------|---------------------------|
| Elementary | Major-General Griesbach S |
| Middle | Major-General Griesbach S |
| High | Queen Elizabeth School |

Additional Information

| | |
|----------------|-----------------|
| Date Listed | July 25th, 2025 |
| Days on Market | 2 |
| Zoning | Zone 27 |

DATA IS DEEMED RELIABLE BUT IS NOT GUARANTEED ACCURATE BY THE REALTORS® ASSOCIATION OF EDMONTON. COPYRIGHT 2025 BY THE REALTORS® ASSOCIATION OF EDMONTON. ALL RIGHTS RESERVED. Trademarks are owned or controlled by the Canadian Real Estate Association (CREA) and identify real estate professionals who are members of CREA (REALTOR®, REALTORS®) and/or the quality of services they provide (MLS®, Multiple Listing Service®)

Listing information last updated on July 27th, 2025 at 4:02am MDT