

\$229,900 - 335 6076 Schonsee Way, Edmonton

MLS® #E4450037

\$229,900

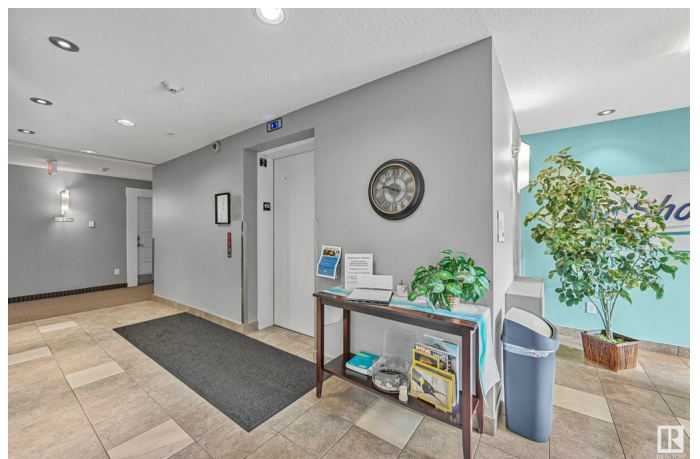
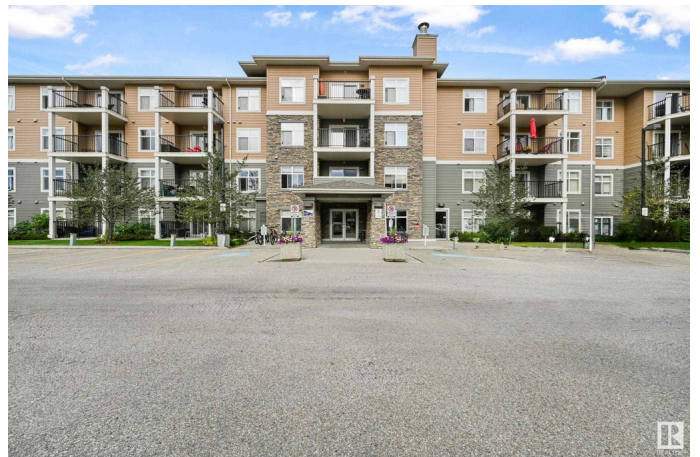
2 Bedroom, 2.00 Bathroom, 799 sqft

Condo / Townhouse on 0.00 Acres

Schonsee, Edmonton, AB

Prime location! Welcome to this FRESHLY PAINTED 2 bedroom & 2 bathroom condo with IN-SUITE LAUNDRY & TITLED UNDERGROUND HEATED PARKING STALL.

Step inside and enjoy the abundance of natural light from large windows that enhance the well designed open concept layout. The spacious kitchen offers ample cabinet & counter space complete with a large island. There is plenty of room to entertain in the adjacent living room with patio doors that lead to a sizeable balcony with GAS BBQ HOOKUP. Primary king-sized bedroom has a large walk-through closet and a 3-pc ensuite. The second bedroom has a 4-pc bathroom just outside the door, perfect for guests or roommates. Well managed complex features a fitness room, elevator, & guest parking. Affordable condo fee INCLUDES HEAT & WATER. Easy access to the Anthony Henday & only steps away from all amenities including ETS, grocery stores, pharmacy, restaurants, schools and parks! IMMEDIATE POSSESSION AVAILABLE. Perfect for the first time home buyer or investor!! Shows 10/10



Built in 2013

Essential Information

MLS® #

E4450037

| | |
|----------------|------------------------|
| Price | \$229,900 |
| Bedrooms | 2 |
| Bathrooms | 2.00 |
| Full Baths | 2 |
| Square Footage | 799 |
| Acres | 0.00 |
| Year Built | 2013 |
| Type | Condo / Townhouse |
| Sub-Type | Lowrise Apartment |
| Style | Single Level Apartment |
| Status | Active |

Community Information

| | |
|-------------|-----------------------|
| Address | 335 6076 Schonsee Way |
| Area | Edmonton |
| Subdivision | Schonsee |
| City | Edmonton |
| County | ALBERTA |
| Province | AB |
| Postal Code | T5Z 0K8 |

Amenities

| | |
|-----------|---|
| Amenities | Closet Organizers, Detectors Smoke, Exercise Room, Parking-Extra, Parking-Visitor, Recreation Room/Centre, Secured Parking, See Remarks |
| Parking | Heated, Underground |

Interior

| | |
|-------------------|--|
| Interior Features | ensuite bathroom |
| Appliances | Dishwasher-Built-In, Dryer, Microwave Hood Fan, Refrigerator, Stove-Electric, Washer |
| Heating | Baseboard, Hot Water, Natural Gas |
| # of Stories | 4 |
| Stories | 1 |
| Has Basement | Yes |
| Basement | None, No Basement |

Exterior

| | |
|----------|--------------------|
| Exterior | Wood, Brick, Vinyl |
|----------|--------------------|

| | |
|-------------------|--|
| Exterior Features | Golf Nearby, Landscaped, Park/Reserve, Picnic Area, Playground Nearby, Public Transportation, Schools, Shopping Nearby |
| Roof | Asphalt Shingles |
| Construction | Wood, Brick, Vinyl |
| Foundation | Concrete Perimeter |

School Information

| | |
|------------|------------------------|
| Elementary | St. John Bosco School |
| Middle | J. J. Bowlen School |
| High | M. E. LaZerte, O'Leary |

Additional Information

| | |
|----------------|-----------------|
| Date Listed | July 28th, 2025 |
| Days on Market | 3 |
| Zoning | Zone 28 |
| Condo Fee | \$370 |

DATA IS DEEMED RELIABLE BUT IS NOT GUARANTEED ACCURATE BY THE REALTORS® ASSOCIATION OF EDMONTON. COPYRIGHT 2025 BY THE REALTORS® ASSOCIATION OF EDMONTON. ALL RIGHTS RESERVED. Trademarks are owned or controlled by the Canadian Real Estate Association (CREA) and identify real estate professionals who are members of CREA (REALTOR®, REALTORS®) and/or the quality of services they provide (MLS®, Multiple Listing Service®)

Listing information last updated on July 31st, 2025 at 1:17pm MDT