

Courtesy Of Joshy Madassery Of Kairali Realty Inc.

\$2,400 - 4610 162a Avenue, Edmonton

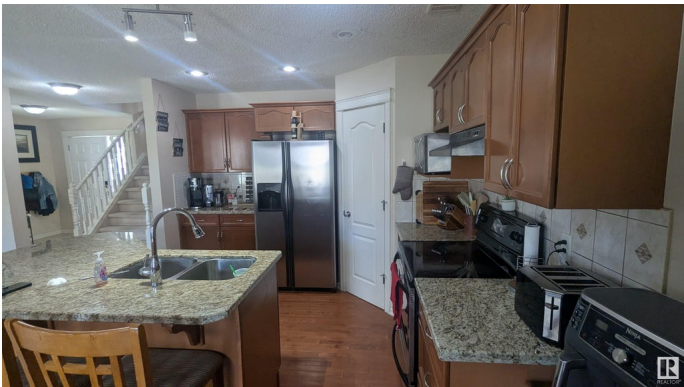
MLS® #E4450659

\$2,400

3 Bedroom, 2.50 Bathroom, 1,857 sqft
Rental on 0.00 Acres

Brintnell, Edmonton, AB

Welcome to this well-maintained 2-storey detached home in the desirable community of Brintnell. The bright and functional main floor features spacious living and dining areas—ideal for daily living and entertaining. The upper level offers generously sized bedrooms, including a comfortable primary suite with ample closet space. The full unfinished basement provides excellent potential for future development to suit your needs. Enjoy a fully fenced and landscaped backyard, perfect for outdoor activities and added privacy. A paved driveway leads to the attached double garage, offering secure and convenient parking. Located in a family-friendly neighborhood near Brintnell Park and Playground, Manning Town Centre, Clareview Recreation Centre, schools, and public transit. Quick access to Anthony Henday Drive makes commuting a breeze. A fantastic opportunity to own a family home in a growing and well-connected community.



Built in 2006

Essential Information

MLS® #	E4450659
Price	\$2,400
Bedrooms	3
Bathrooms	2.50

Full Baths	2
Half Baths	1
Square Footage	1,857
Acres	0.00
Year Built	2006
Type	Rental
Style	2 Storey
Status	Active

Community Information

Address	4610 162a Avenue
Area	Edmonton
Subdivision	Brintnell
City	Edmonton
County	ALBERTA
Province	AB
Postal Code	T5Y 3M5

Amenities

Parking	Double Garage Attached
---------	------------------------

Interior

Appliances	Dishwasher-Built-In, Dryer, Oven-Microwave, Refrigerator, Stove-Electric, Washer
------------	--

Additional Information

Date Listed	July 31st, 2025
Days on Market	2
Zoning	Zone 03

DATA IS DEEMED RELIABLE BUT IS NOT GUARANTEED ACCURATE BY THE REALTORS® ASSOCIATION OF EDMONTON. COPYRIGHT 2025 BY THE REALTORS® ASSOCIATION OF EDMONTON. ALL RIGHTS RESERVED. Trademarks are owned or controlled by the Canadian Real Estate Association (CREA) and identify real estate professionals who are members of CREA (REALTOR®, REALTORS®) and/or the quality of services they provide (MLS®, Multiple Listing Service®)

Listing information last updated on August 2nd, 2025 at 1:02pm MDT