

\$789,933 - 10307 175 Avenue, Edmonton

MLS® #E4450950

\$789,933

5 Bedroom, 3.50 Bathroom, 2,769 sqft

Single Family on 0.00 Acres

Elsinore, Edmonton, AB

Location, Location.. this spacious 4 bedroom, 3½ bath family home nestled along a serene lake in the desirable neighborhood of Elsinore. Over 4,000 sq ft of elegant living space across three levels - including a finished walkout basement. grand foyer welcomes you with curved staircase accents & sightlines into the Formal Dining & Living areas - perfect for family meals & gatherings. The bright main floor features a cozy living room with fireplace & a breakfast nook overlooking the water. Step outside onto the large composite raised deck to enjoy peaceful lake views, mature trees & landscaped yard. Upstairs, the primary suite includes a walk in closet & 4pce ensuite, with two more bedrooms & full bath. Walkout basement boasts a huge rec room, woodburning fireplace, 4th bedroom, full bath & access to the backyard - ideal for play, guests or quiet nights. Close to parks, schools, shopping & transit - comfort & value await. Newer Roof, HWT, Furnaces, Central Air Conditioning, Electrical, Eavestroughs, Deck.

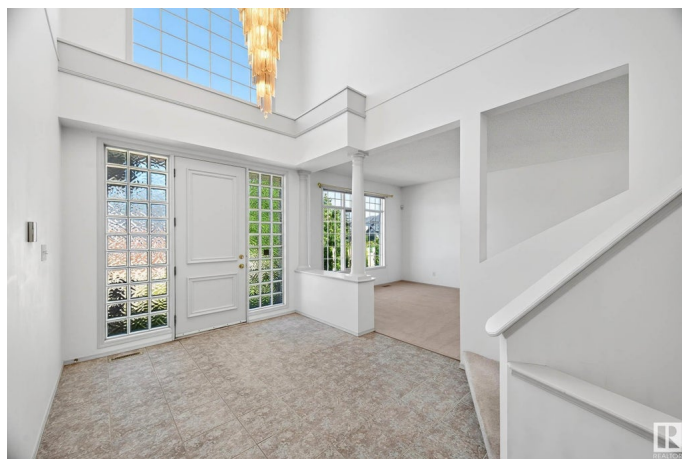
Built in 1992

Essential Information

MLS® # E4450950

Price \$789,933

Bedrooms 5



Bathrooms	3.50
Full Baths	3
Half Baths	1
Square Footage	2,769
Acres	0.00
Year Built	1992
Type	Single Family
Sub-Type	Detached Single Family
Style	2 Storey
Status	Active

Community Information

Address	10307 175 Avenue
Area	Edmonton
Subdivision	Elsinore
City	Edmonton
County	ALBERTA
Province	AB
Postal Code	T5X 5W9

Amenities

Amenities	Air Conditioner, Deck, Patio, Vaulted Ceiling, Walkout Basement, See Remarks
Parking Spaces	4
Parking	Double Garage Attached
Is Waterfront	Yes

Interior

Interior Features	ensuite bathroom
Appliances	Dishwasher-Built-In, Dryer, Garage Control, Garage Opener, Hood Fan, Oven-Built-In, Stove-Countertop Electric, Washer, Window Coverings, Refrigerators-Two
Heating	Forced Air-1, Forced Air-2, Natural Gas
Fireplace	Yes
Fireplaces	Mantel, Tile Surround
Stories	3
Has Basement	Yes
Basement	Full, Finished

Exterior

Exterior	Wood, Brick, Vinyl
Exterior Features	Backs Onto Lake, Golf Nearby, Lake Access Property, Landscaped, No Back Lane, Park/Reserve, Playground Nearby, Public Transportation, Schools, Shopping Nearby, View Lake, See Remarks
Roof	Asphalt Shingles
Construction	Wood, Brick, Vinyl
Foundation	Concrete Perimeter

Additional Information

Date Listed	August 1st, 2025
Days on Market	1
Zoning	Zone 27

DATA IS DEEMED RELIABLE BUT IS NOT GUARANTEED ACCURATE BY THE REALTORS® ASSOCIATION OF EDMONTON. COPYRIGHT 2025 BY THE REALTORS® ASSOCIATION OF EDMONTON. ALL RIGHTS RESERVED.Trademarks are owned or controlled by the Canadian Real Estate Association (CREA) and identify real estate professionals who are members of CREA (REALTOR®, REALTORS®) and/or the quality of services they provide (MLS®, Multiple Listing Service®)

Listing information last updated on August 2nd, 2025 at 3:02pm MDT