

\$152,000 - Willow Park, Stony Plain

MLS® #E4451518

\$152,000

0 Bedroom, 0.00 Bathroom,
Single Family on 0.00 Acres

Willow Park_STPL, Stony Plain, AB

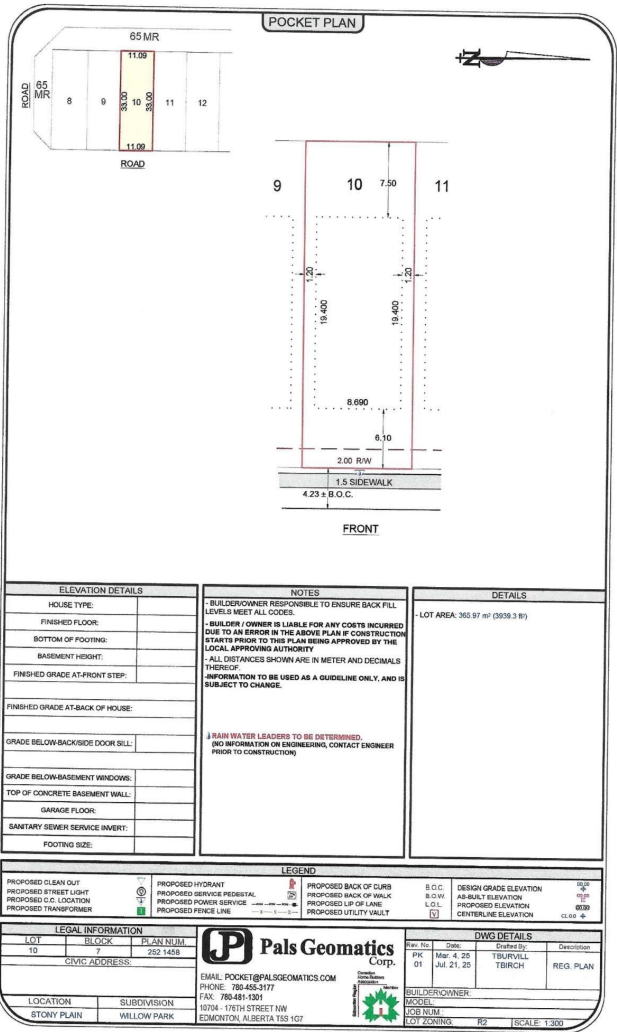
Excellent opportunity in the vibrant community of Willow Park, Stony Plain! This fully serviced lot features a 28 ft building pocket—ideal for a custom home or investment build. Quick possession available with flexible deposit terms. Located near schools, parks, and all amenities, this is a prime spot for families, builders, or investors. Custom build options available—start planning your dream home today!

Essential Information

MLS® #	E4451518
Price	\$152,000
Bathrooms	0.00
Acres	0.00
Type	Single Family
Sub-Type	Vacant Lot/Land
Status	Active

Community Information

Address	Willow Park
Area	Stony Plain
Subdivision	Willow Park_STPL
City	Stony Plain
County	ALBERTA
Province	AB
Postal Code	T7Z 0H1

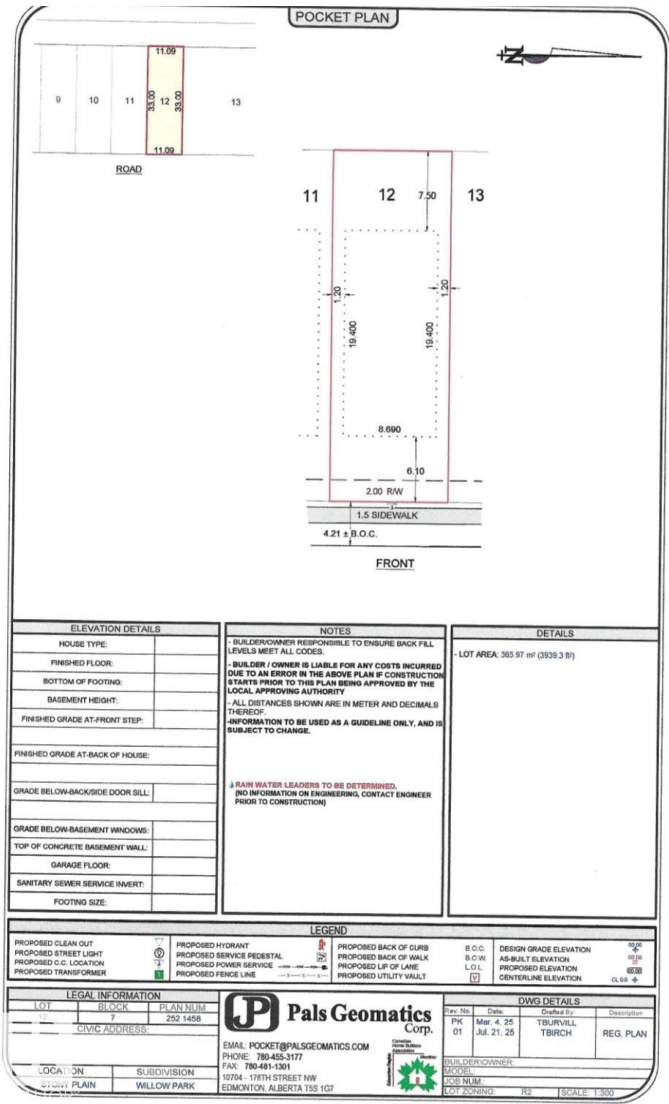


Exterior

Exterior Features Schools, Shopping Nearby, S

Additional Information

Date Listed August 6th, 2025
Days on Market 2
Zoning Zone 91



DATA IS DEEMED RELIABLE BUT IS NOT GUARANTEED ACCURATE BY THE REALTORS® ASSOCIATION OF EDMONTON. COPYRIGHT 2025 BY THE REALTORS® ASSOCIATION OF EDMONTON. ALL RIGHTS RESERVED. Trademarks are owned or controlled by the Canadian Real Estate Association (CREA) and identify real estate professionals who are members of CREA (REALTOR®, REALTORS®, and/or the quality of services they provide (MLS®, Multiple Listing Service®). Listing information last updated on August 7th, 2025 at 9:31pm MDT.

