

## \$419,800 - 2424 Glenridding Boulevard, Edmonton

MLS® #E4451563

**\$419,800**

3 Bedroom, 2.50 Bathroom, 1,432 sqft

Single Family on 0.00 Acres

Glenridding Heights, Edmonton, AB

Welcome to Glenridding Heights, the perfect blend of style, comfort, and convenience! This bright and well-maintained end-unit townhome offers 3 spacious bedrooms, 2.5 bathrooms, and NO condo fees. The open-concept main floor features a modern kitchen with plenty of counter space, a generous dining area, and an inviting living room. Upstairs, you'll find a thoughtfully designed second floor with three large bedrooms and two full bathrooms. The primary suite is a true retreat, completed with a walk-in closet and private ensuite. Two additional bedrooms are roomy and come with their own walk-in closets. Another full bath completes the second floor. Outside, you'll appreciate the double car garage, offering secure parking & extra storage. Located in a quiet, family-friendly neighborhood, this home is close to schools, shopping, parks, trails, and major roadways. you need is just minutes away. Whether you're a first-time buyer or looking for a low-maintenance family home, this property checks all the boxes.

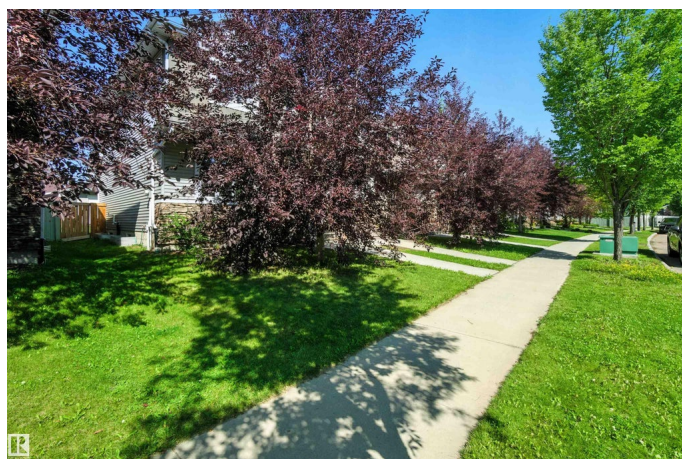
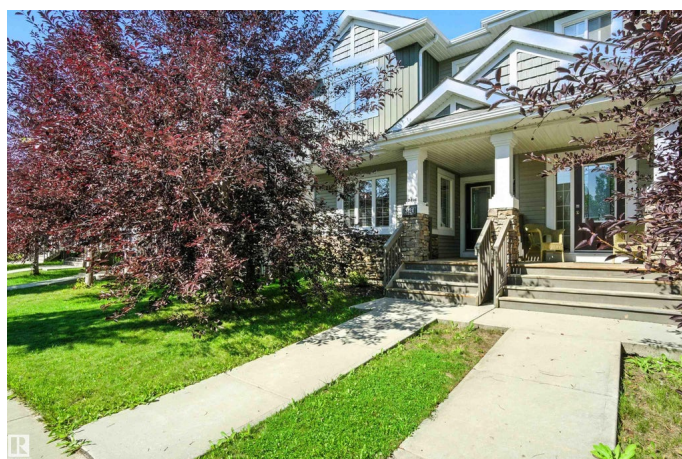
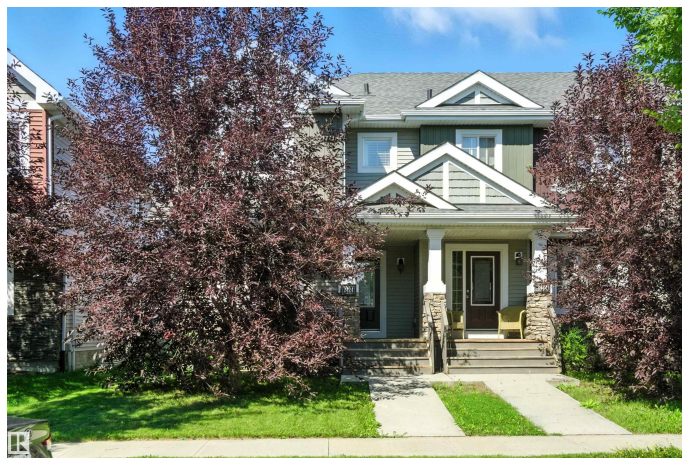
Built in 2014

### Essential Information

MLS® # E4451563

Price \$419,800

Bedrooms 3



Bathrooms	2.50
Full Baths	2
Half Baths	1
Square Footage	1,432
Acres	0.00
Year Built	2014
Type	Single Family
Sub-Type	Residential Attached
Style	2 Storey
Status	Active

### Community Information

Address	2424 Glenridding Boulevard
Area	Edmonton
Subdivision	Glenridding Heights
City	Edmonton
County	ALBERTA
Province	AB
Postal Code	T6W 2T4

### Amenities

Amenities	Detectors Smoke
Parking	Double Garage Detached

### Interior

Interior Features	ensuite bathroom
Appliances	Dishwasher-Built-In, Dryer, Hood Fan, Refrigerator, Stove-Electric, Washer
Heating	Forced Air-1, Natural Gas
Stories	2
Has Basement	Yes
Basement	Full, Unfinished

### Exterior

Exterior	Wood, Stone, Vinyl
Exterior Features	Fenced, Landscaped, Level Land, Schools, Shopping Nearby
Roof	Asphalt Shingles
Construction	Wood, Stone, Vinyl
Foundation	Concrete Perimeter

**Additional Information**

Date Listed            August 7th, 2025  
Days on Market       1  
Zoning                 Zone 56  
HOA Fees Freq.      Other

DATA IS DEEMED RELIABLE BUT IS NOT GUARANTEED ACCURATE BY THE REALTORS® ASSOCIATION OF EDMONTON. COPYRIGHT 2025 BY THE REALTORS® ASSOCIATION OF EDMONTON. ALL RIGHTS RESERVED.Trademarks are owned or controlled by the Canadian Real Estate Association (CREA) and identify real estate professionals who are members of CREA (REALTOR®, REALTORS®) and/or the quality of services they provide (MLS®, Multiple Listing Service®)  
Listing information last updated on August 7th, 2025 at 9:31pm MDT