

## \$650,000 - 905 Rice Road, Edmonton

MLS® #E4451699

### \$650,000

5 Bedroom, 2.50 Bathroom, 2,446 sqft  
Single Family on 0.00 Acres

Rhatigan Ridge, Edmonton, AB

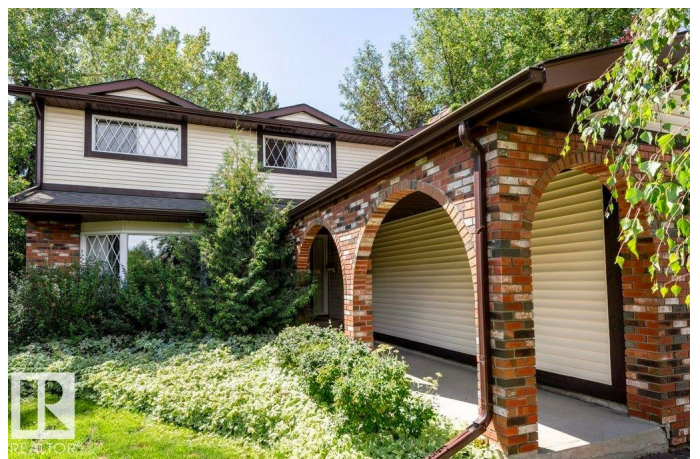
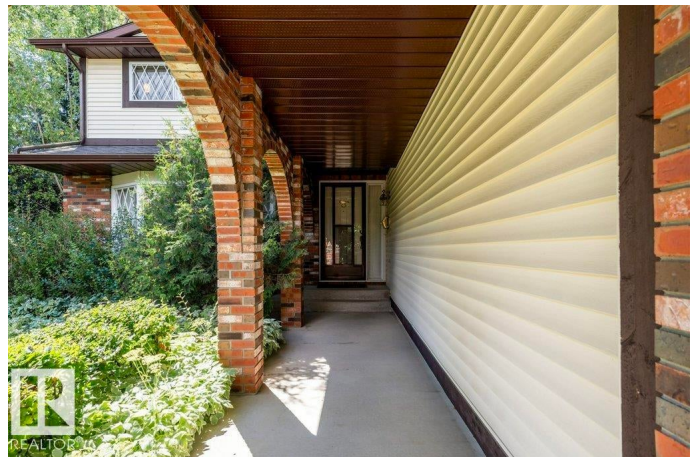
#### LOCATION LOCATION, LOCATION!!

Spacious 2,445SQFT two-storey is just steps from TOP RATED schools, shopping, TERWILLEGAR DOG PARK, River Valley, and transitâ€”perfect for growing families. The main floor offers a versatile main floorplan that can easily be opened up for a large GREAT ROOM feel, The kitchen, dining, livingroom in the perfect configuration to create an open concept. In addition there is also a cozy family room with TYNDAL STONE fireplace, and convenient main floor laundry. Upstairs youâ€™ll find FIVE BEDROOMS including a PALATIAL PRIMARY suite with bay window, dressing area, DUAL CLOSETS, and private ensuite. Two Furnaces, BRAND NEW ROOF, Composite Deck and tons of storage throughout add to the appeal. Unfinished basement is the icing on the cake! Sensational Private Southwest Backyard is Mature and Private, Attached garage, thoughtful layout, and classic PERRY-BUILT Quality make this a standout in the heart of Riverbend!

Built in 1981

#### Essential Information

MLS® #	E4451699
Price	\$650,000
Bedrooms	5



Bathrooms	2.50
Full Baths	2
Half Baths	1
Square Footage	2,446
Acres	0.00
Year Built	1981
Type	Single Family
Sub-Type	Detached Single Family
Style	2 Storey
Status	Active

### Community Information

Address	905 Rice Road
Area	Edmonton
Subdivision	Rhatigan Ridge
City	Edmonton
County	ALBERTA
Province	AB
Postal Code	T6R 1B1

### Amenities

Amenities	Air Conditioner, Deck, No Smoking Home
Parking Spaces	4
Parking	Double Garage Attached

### Interior

Interior Features	ensuite bathroom
Appliances	Air Conditioning-Central, Dishwasher-Built-In, Dryer, Microwave Hood Fan, Refrigerator, Stove-Electric, Washer
Heating	Forced Air-2, Natural Gas
Fireplace	Yes
Fireplaces	Stone Facing
Stories	2
Has Basement	Yes
Basement	Full, Unfinished

### Exterior

Exterior	Wood, Brick
Exterior Features	Fenced, Landscaped, Schools

Lot Description	36'x108'
Roof	Asphalt Shingles
Construction	Wood, Brick
Foundation	Concrete Perimeter

### **School Information**

Elementary	EARL BUXTON
Middle	RIVERBEND
High	STRATHCONA

### **Additional Information**

Date Listed	August 7th, 2025
Days on Market	1
Zoning	Zone 14

DATA IS DEEMED RELIABLE BUT IS NOT GUARANTEED ACCURATE BY THE REALTORS® ASSOCIATION OF EDMONTON. COPYRIGHT 2025 BY THE REALTORS® ASSOCIATION OF EDMONTON. ALL RIGHTS RESERVED. Trademarks are owned or controlled by the Canadian Real Estate Association (CREA) and identify real estate professionals who are members of CREA (REALTOR®, REALTORS®) and/or the quality of services they provide (MLS®, Multiple Listing Service®)

Listing information last updated on August 8th, 2025 at 6:02am MDT