

\$448,900 - 1027 109 Street, Edmonton

MLS® #E4453552

\$448,900

3 Bedroom, 3.50 Bathroom, 2,189 sqft
Condo / Townhouse on 0.00 Acres

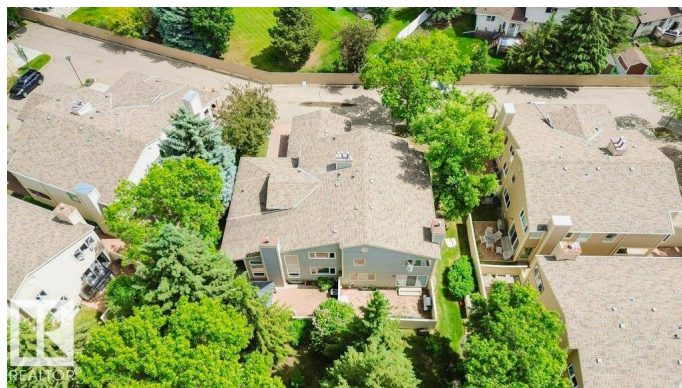
Bearspaw (Edmonton), Edmonton, AB

Located in Bearspaw, this executive 3-bedroom 4 bath condo with a total of 3501 sq ft & double garage in Brechinridge showcases a vaulted ceiling in the great room with a cozy fireplace. The main floor owner's suite serves as a luxurious retreat, featuring a jacuzzi tub and a separate shower. The upper loft provides a picturesque view of the main floor below. Immaculate condo boasts gleaming hardwood floors, fresh decor paint, newer stainless steel appliances, professionally finished basement offers a guest room, a 3-piece bathroom, and a recreational room for your entertainment needs. Updated with two newer furnaces, central air conditioning, and ample storage space, this property is both modern and functional. Step outside to enjoy the private backyard, which backs onto a tranquil courtyard with lush towering trees, creating a serene atmosphere. Pets allowed with approval also just steps away from the off leash dog park ! Choose to live the lifestyle you deserve in this exceptional condo.

Built in 1980

Essential Information

MLS® #	E4453552
Price	\$448,900



Bedrooms	3
Bathrooms	3.50
Full Baths	3
Half Baths	1
Square Footage	2,189
Acres	0.00
Year Built	1980
Type	Condo / Townhouse
Sub-Type	Townhouse
Style	1 and Half Storey
Status	Active

Community Information

Address	1027 109 Street
Area	Edmonton
Subdivision	Bearspaw (Edmonton)
City	Edmonton
County	ALBERTA
Province	AB
Postal Code	T6J 5G2

Amenities

Amenities	Deck, Detectors Smoke, Vaulted Ceiling
Parking	Double Garage Attached, Insulated

Interior

Interior Features	ensuite bathroom
Appliances	Dishwasher-Built-In, Dryer, Garage Control, Garage Opener, Garburator, Humidifier-Power(Furnace), Oven-Built-In, Refrigerator, Stove-Electric, Vacuum System Attachments, Vacuum Systems, Washer, Water Softener, Window Coverings
Heating	Forced Air-2, Natural Gas
Fireplace	Yes
Fireplaces	Insert
Stories	3
Has Basement	Yes
Basement	Full, Finished

Exterior

Exterior	Wood, Metal
Exterior Features	Airport Nearby, Backs Onto Park/Trees, Landscaped, Park/Reserve, Public Transportation, Schools, Shopping Nearby
Roof	Asphalt Shingles
Construction	Wood, Metal
Foundation	Concrete Perimeter

Additional Information

Date Listed	August 16th, 2025
Days on Market	3
Zoning	Zone 16
Condo Fee	\$841

DATA IS DEEMED RELIABLE BUT IS NOT GUARANTEED ACCURATE BY THE REALTORS® ASSOCIATION OF EDMONTON. COPYRIGHT 2025 BY THE REALTORS® ASSOCIATION OF EDMONTON. ALL RIGHTS RESERVED. Trademarks are owned or controlled by the Canadian Real Estate Association (CREA) and identify real estate professionals who are members of CREA (REALTOR®, REALTORS®) and/or the quality of services they provide (MLS®, Multiple Listing Service®)

Listing information last updated on August 19th, 2025 at 12:02pm MDT