

# **\$2,155,555 - 564032-564034 Range Road 130, Rural Two Hills County**

---

MLS® #E4453591

**\$2,155,555**

4 Bedroom, 3.50 Bathroom, 2,115 sqft

Rural on 160.00 Acres

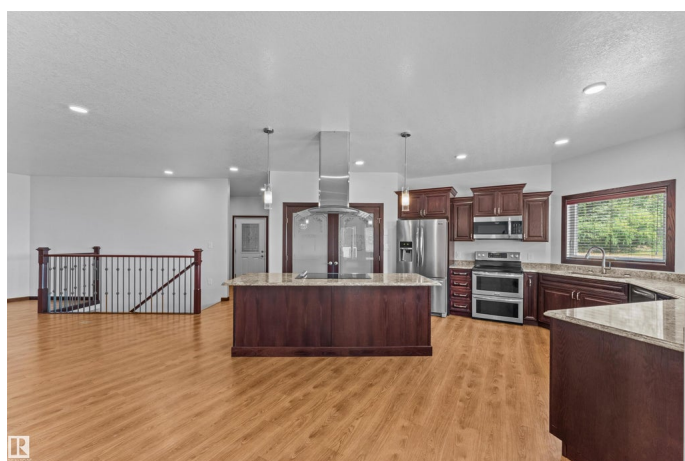
None, Rural Two Hills County, AB

Build a legacy starting here, with 160 acres of rich prairie land in Two Hills County. Before exploring the sprawling yellow crops and green pasture, step inside the pure luxury of this custom bungalow. Whether its the dream kitchen with massive pantry, secluded patio with hot tub, or 4 massive bedrooms and bathrooms, you'll see craftsmanship throughout the almost 5000sqft living space. That attention to detail continues into the oversized garage with in floor heating as well as the expansive basement where family can relax together after a days work is done. The original farm house with septic and well still stands, adding an additional element of possibility. Did we mention the cattle set up, or seeded 125 acres? Woops, we probably also forgot the extended and life time warranties on elements of the home too. This is one of those rare chances to own a part of the Alberta landscape without sacrificing a comfortable lifestyle.

Built in 2017

## **Essential Information**

MLS® #	E4453591
Price	\$2,155,555
Bedrooms	4



Bathrooms	3.50
Full Baths	3
Half Baths	1
Square Footage	2,115
Acres	160.00
Year Built	2017
Type	Rural
Sub-Type	Detached Single Family
Style	Bungalow
Status	Active

### Community Information

Address	564032-564034 Range Road 130
Area	Rural Two Hills County
Subdivision	None
City	Rural Two Hills County
County	ALBERTA
Province	AB
Postal Code	T0B 0P0

### Amenities

Features	Air Conditioner, Bar, Ceiling 10 ft., Closet Organizers, Deck, Detectors Smoke, Front Porch, Hot Tub, Hot Water Instant
----------	---

### Interior

Interior Features	ensuite bathroom
Heating	In Floor Heat System, Natural Gas, Water
Fireplace	Yes
Stories	2
Has Basement	Yes
Basement	Full, Finished

### Exterior

Exterior	Wood
Exterior Features	Fruit Trees/Shrubs, No Back Lane, Not Fenced, Stream/Pond
Construction	Wood
Foundation	Concrete Perimeter

### Additional Information

Date Listed August 18th, 2025

Days on Market 9

Zoning Zone RUR1

DATA IS DEEMED RELIABLE BUT IS NOT GUARANTEED ACCURATE BY THE REALTORS® ASSOCIATION OF EDMONTON. COPYRIGHT 2025 BY THE REALTORS® ASSOCIATION OF EDMONTON. ALL RIGHTS RESERVED. Trademarks are owned or controlled by the Canadian Real Estate Association (CREA) and identify real estate professionals who are members of CREA (REALTOR®, REALTORS®) and/or the quality of services they provide (MLS®, Multiple Listing Service®)

Listing information last updated on August 27th, 2025 at 11:33am MDT