

# \$750,000 - 13 53333 Rge Road 20, Rural Parkland County

MLS® #E4454061

**\$750,000**

3 Bedroom, 3.50 Bathroom, 2,589 sqft

Rural on 3.63 Acres

Chateau Heights, Rural Parkland County, AB

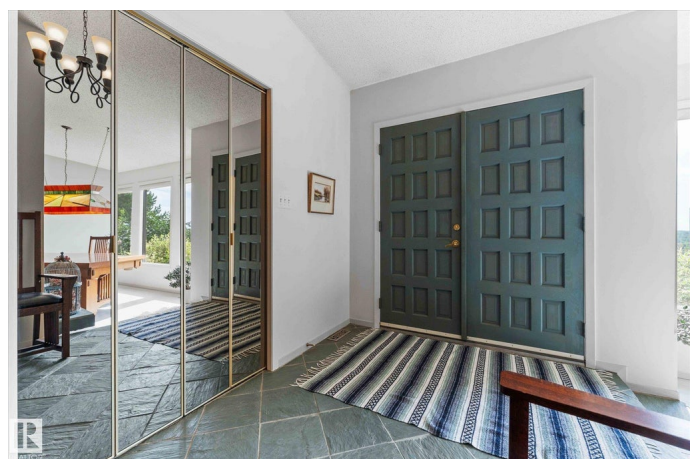
This beautiful 2,588 sq ft bungalow sits on 3.63 acres of peaceful country living while still being close to city conveniences. Offering 3 bedrooms, 3.5 bathrooms, and a fully finished basement, this home is designed with both comfort and function in mind. Inside, you'll love the open and well maintained living spaces, complete with air conditioning for year-round comfort and a dedicated hot tub room for relaxation. The basement adds plenty of room for family living or entertaining. Step outside and enjoy the stunning landscaped yard, complete with mature trees, fruit trees, a dog run, and an outdoor area that transforms into a family ice rink in the winter. The triple oversized attached garage is a standout feature, equipped with an electric car charger and plenty of storage space. This property blends the best of acreage living with thoughtful details for today's lifestyle. Whether you're enjoying summer evenings in the yard or winter days skating outside with the family, this home has it all.

Built in 1978

## Essential Information

MLS® # E4454061

Price \$750,000



|                |                        |
|----------------|------------------------|
| Bedrooms       | 3                      |
| Bathrooms      | 3.50                   |
| Full Baths     | 3                      |
| Half Baths     | 1                      |
| Square Footage | 2,589                  |
| Acres          | 3.63                   |
| Year Built     | 1978                   |
| Type           | Rural                  |
| Sub-Type       | Detached Single Family |
| Style          | Bungalow               |
| Status         | Active                 |

### Community Information

|             |                       |
|-------------|-----------------------|
| Address     | 13 53333 Rge Road 20  |
| Area        | Rural Parkland County |
| Subdivision | Chateau Heights       |
| City        | Rural Parkland County |
| County      | ALBERTA               |
| Province    | AB                    |
| Postal Code | T7Y 0C4               |

### Amenities

|          |  |
|----------|--|
| Features | Air Conditioner, Deck, Dog Run-Fenced In, Hot Tub, See Remarks |
|----------|--|

### Interior

|                   |                           |
|-------------------|---------------------------|
| Interior Features | ensuite bathroom          |
| Heating           | Forced Air-1, Natural Gas |
| Fireplace         | Yes                       |
| Stories           | 2                         |
| Has Basement      | Yes                       |
| Basement          | Full, Finished            |

### Exterior

|                   |  |
|-------------------|--|
| Exterior          | Wood   |
| Exterior Features | Fruit Trees/Shrubs, Landscaped, Rolling Land, Treed Lot, See Remarks |
| Construction      | Wood   |
| Foundation        | Concrete Perimeter   |

### Additional Information

Date Listed August 21st, 2025

Days on Market 2

Zoning Zone 70

DATA IS DEEMED RELIABLE BUT IS NOT GUARANTEED ACCURATE BY THE REALTORS® ASSOCIATION OF EDMONTON. COPYRIGHT 2025 BY THE REALTORS® ASSOCIATION OF EDMONTON. ALL RIGHTS RESERVED. Trademarks are owned or controlled by the Canadian Real Estate Association (CREA) and identify real estate professionals who are members of CREA (REALTOR®, REALTORS®) and/or the quality of services they provide (MLS®, Multiple Listing Service®)

Listing information last updated on August 23rd, 2025 at 7:32am MDT