

\$899,900 - 908 Wood Place, Edmonton

MLS® #E4454201

\$899,900

3 Bedroom, 2.50 Bathroom, 1,690 sqft

Single Family on 0.00 Acres

Windermere, Edmonton, AB

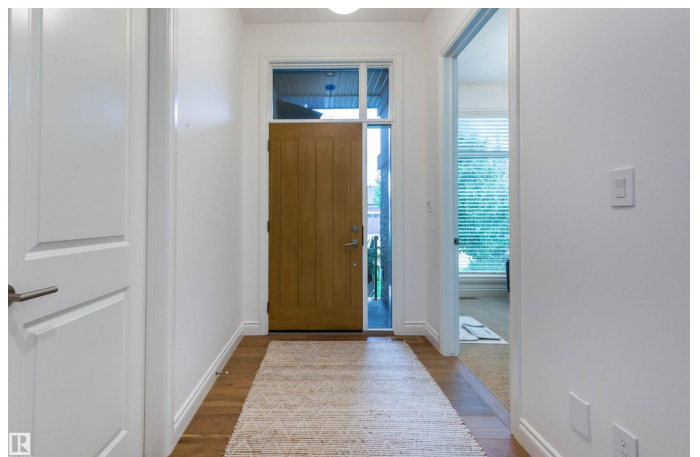
Welcome to the Cascades of One at Windermere! This spectacular south-backing Ace Lange duplex bungalow (Legacy floor plan) has been extensively upgraded by the current owners since their purchase. The chef's kitchen now boasts a professional Fulgor Milano gas range with dual oven, Sub-Zero refrigerator/freezer, redesigned walk-in pantry, and enhanced cabinetry for both style and function. Further updates include fresh paint throughout, Sonos integrated sound system, striking Vivid lighting fixtures, basement storage improvements, and a heated garage with custom shelving. The splendid primary suite highlights a massive walk-through closet with direct access to the upper laundry. Step onto the zero-maintenance composite terrace to enjoy your fabulously landscaped, south-facing yard. Built solid with 6-inch concrete block separation, and soaring 10-ft ceilings. HOA for snow and lawn. This home blends elegance with peace of mind. Prime location—walking distance to ravine trails, golf, dining, and shopping.

Built in 2016

Essential Information

MLS® # E4454201

Price \$899,900



Bedrooms	3
Bathrooms	2.50
Full Baths	2
Half Baths	1
Square Footage	1,690
Acres	0.00
Year Built	2016
Type	Single Family
Sub-Type	Half Duplex
Style	Bungalow
Status	Active

Community Information

Address	908 Wood Place
Area	Edmonton
Subdivision	Windermere
City	Edmonton
County	ALBERTA
Province	AB
Postal Code	T6W 3G8

Amenities

Amenities	Air Conditioner, Ceiling 10 ft., Deck, No Animal Home, No Smoking Home, Smart/Program. Thermostat, HRV System, Natural Gas BBQ Hookup
Parking Spaces	4
Parking	Double Garage Attached

Interior

Interior Features	ensuite bathroom
Appliances	Air Conditioning-Central, Dishwasher-Built-In, Dryer, Garage Control, Garburator, Hood Fan, Oven-Microwave, Stove-Countertop Gas, Vacuum Systems, Washer, Window Coverings, Wine/Beverage Cooler, Refrigerators-Two, Oven Built-In-Two, Garage Heater
Heating	Forced Air-1, Natural Gas
Fireplace	Yes
Fireplaces	Mantel
Stories	2
Has Basement	Yes

Basement	Full, Finished
----------	----------------

Exterior

Exterior	Wood, Stone, Stucco
----------	---------------------

Exterior Features	Cul-De-Sac, Golf Nearby, Landscaped, Level Land, No Through Road, Picnic Area, Playground Nearby, Public Transportation, Shopping Nearby
-------------------	--

Roof	Asphalt Shingles
------	------------------

Construction	Wood, Stone, Stucco
--------------	---------------------

Foundation	Concrete Perimeter
------------	--------------------

School Information

Elementary	Constable Daniel Woodall
------------	--------------------------

Middle	Constable Daniel Woodall
--------	--------------------------

High	Lillian Osborne
------	-----------------

Additional Information

Date Listed	August 22nd, 2025
-------------	-------------------

Days on Market	1
----------------	---

Zoning	Zone 56
--------	---------

HOA Fees	2070.5
----------	--------

HOA Fees Freq.	Annually
----------------	----------

DATA IS DEEMED RELIABLE BUT IS NOT GUARANTEED ACCURATE BY THE REALTORS® ASSOCIATION OF EDMONTON. COPYRIGHT 2025 BY THE REALTORS® ASSOCIATION OF EDMONTON. ALL RIGHTS RESERVED. Trademarks are owned or controlled by the Canadian Real Estate Association (CREA) and identify real estate professionals who are members of CREA (REALTOR®, REALTORS®) and/or the quality of services they provide (MLS®, Multiple Listing Service®)

Listing information last updated on August 23rd, 2025 at 3:17am MDT