

## \$886,000 - 8 Greenwood Place, St. Albert

MLS® #E4454237

**\$886,000**

4 Bedroom, 3.50 Bathroom, 2,442 sqft

Single Family on 0.00 Acres

Grandin, St. Albert, AB

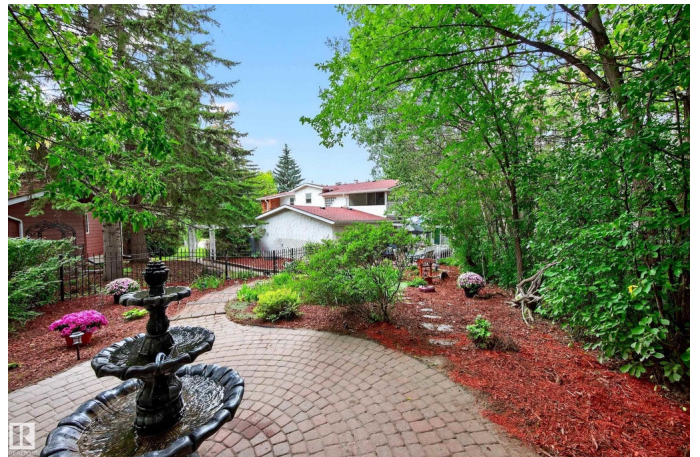
Exceptional, rare opportunity to own one of St. Albert's largest ravine backing lots. This executive, walkout 2 storey home with European appeal exemplifies class and privacy on nearly a half acre lot on Grandin Ravine-just steps to river valley trails and the Farmer's Market. This 4 bedroom, 3.5 bath home features over 3400 sq ft of living space, plus 4 balconies and 3 patios- providing maximum exposure to the tranquil forest views. The main level features an expansive maple kitchen with gas stove, and a vaulted breakfast nook surrounded by windows and a picturesque backdrop. The upper level has a renovated 5 pc main bath, 2 large bedrooms and a spacious, primary retreat with vaulted ceiling, 3 pc ensuite, wood burning fireplace and a private balcony. In addition, there's a dream den/library with gas fireplace framed amongst the trees. The basement highlights a home theatre and a large rec room with walkout access to the 8 person therapeutic hot tub. Enjoy a walkable lifestyle without sacrificing privacy.

Built in 1974

### Essential Information

MLS® # E4454237

Price \$886,000



Bedrooms	4
Bathrooms	3.50
Full Baths	3
Half Baths	1
Square Footage	2,442
Acres	0.00
Year Built	1974
Type	Single Family
Sub-Type	Detached Single Family
Style	2 Storey
Status	Active

### Community Information

Address	8 Greenwood Place
Area	St. Albert
Subdivision	Grandin
City	St. Albert
County	ALBERTA
Province	AB
Postal Code	T8N 2H5

### Amenities

Amenities	Deck, Fire Pit, Hot Tub, No Smoking Home, Parking-Extra, Skylight, Vaulted Ceiling, Walkout Basement
Parking	Double Garage Attached

### Interior

Interior Features	ensuite bathroom
Appliances	Dishwasher-Built-In, Dryer, Freezer, Garage Opener, Hood Fan, Oven-Built-In, Refrigerator, Stove-Countertop Gas, Vacuum System Attachments, Vacuum Systems, Washer, Window Coverings, Projector, Hot Tub
Heating	Forced Air-2, Natural Gas
Fireplace	Yes
Fireplaces	Tile Surround
Stories	3
Has Basement	Yes
Basement	Full, Finished

### Exterior

Exterior	Wood, Brick, Stucco
Exterior Features	Backs Onto Park/Trees, Landscaped, Park/Reserve, Picnic Area, Playground Nearby, Private Setting, Ravine View, Schools, Shopping Nearby
Roof	Asphalt Shingles
Construction	Wood, Brick, Stucco
Foundation	Concrete Perimeter

### **School Information**

Elementary	Wild Rose Elementary
Middle	Ecole Hillgrove School
High	Paul Kane High School

### **Additional Information**

Date Listed	August 22nd, 2025
Days on Market	1
Zoning	Zone 24

DATA IS DEEMED RELIABLE BUT IS NOT GUARANTEED ACCURATE BY THE REALTORS® ASSOCIATION OF EDMONTON. COPYRIGHT 2025 BY THE REALTORS® ASSOCIATION OF EDMONTON. ALL RIGHTS RESERVED. Trademarks are owned or controlled by the Canadian Real Estate Association (CREA) and identify real estate professionals who are members of CREA (REALTOR®, REALTORS®) and/or the quality of services they provide (MLS®, Multiple Listing Service®)

Listing information last updated on August 23rd, 2025 at 3:17am MDT