

\$534,900 - 1931 160 Street, Edmonton

MLS® #E4454239

\$534,900

3 Bedroom, 2.50 Bathroom, 1,750 sqft

Single Family on 0.00 Acres

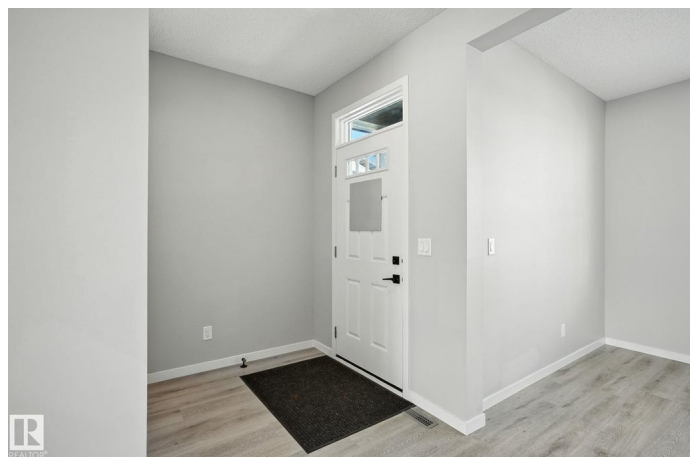
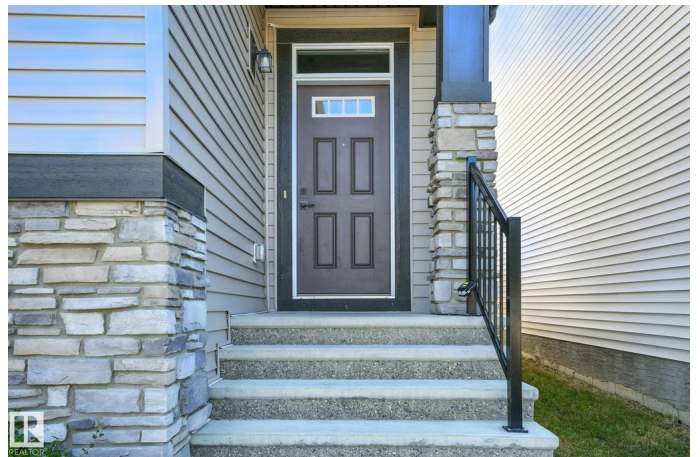
Glenridding Ravine, Edmonton, AB

Welcome to this beautifully designed 1,650 sq. ft. 2-storey in Glenriding Ravine, built in 2022 and complete with a double detached garage. This modern home offers 3 bedrooms, 2.5 baths, and stylish finishes throughout. The upper level features a bright bonus room, perfect for a home office, playroom, or media area. Designed with a separate side entrance, second furnace, and rough-in for a secondary suite, this home is ready for income potential â€” making it an excellent choice for first-time buyers or savvy investors. Ideally located close to shopping, schools, parks, and convenient bus transportation, this home truly combines comfort, opportunity, and lifestyle.

Built in 2022

Essential Information

MLS® #	E4454239
Price	\$534,900
Bedrooms	3
Bathrooms	2.50
Full Baths	2
Half Baths	1
Square Footage	1,750
Acres	0.00
Year Built	2022
Type	Single Family



Sub-Type	Detached Single Family
Style	2 Storey
Status	Active

Community Information

Address	1931 160 Street
Area	Edmonton
Subdivision	Glenridding Ravine
City	Edmonton
County	ALBERTA
Province	AB
Postal Code	T6W 4X6

Amenities

Amenities	Vinyl Windows, See Remarks
Parking	Double Garage Detached

Interior

Interior Features	ensuite bathroom
Appliances	Dishwasher-Built-In, Dryer, Garage Control, Garage Opener, Microwave Hood Fan, Refrigerator, Stove-Electric, Washer
Heating	Forced Air-2, Natural Gas
Stories	2
Has Basement	Yes
Basement	Full, See Remarks

Exterior

Exterior	Wood, Stone, Vinyl
Exterior Features	Back Lane, Fenced, Landscaped, Playground Nearby, Schools, Shopping Nearby
Roof	Asphalt Shingles
Construction	Wood, Stone, Vinyl
Foundation	Concrete Perimeter

Additional Information

Date Listed	August 21st, 2025
Days on Market	2
Zoning	Zone 56

DATA IS DEEMED RELIABLE BUT IS NOT GUARANTEED ACCURATE BY THE REALTORS® ASSOCIATION OF EDMONTON. COPYRIGHT 2025 BY THE REALTORS® ASSOCIATION OF EDMONTON. ALL RIGHTS

RESERVED.Trademarks are owned or controlled by the Canadian Real Estate Association (CREA) and identify real estate professionals who are members of CREA (REALTOR®, REALTORS®) and/or the quality of services they provide (MLS®, Multiple Listing Service®)

Listing information last updated on August 23rd, 2025 at 3:17am MDT