

\$424,900 - 367 Summerton Crescent, Sherwood Park

MLS® #E4454246

\$424,900

3 Bedroom, 2.50 Bathroom, 1,281 sqft

Single Family on 0.00 Acres

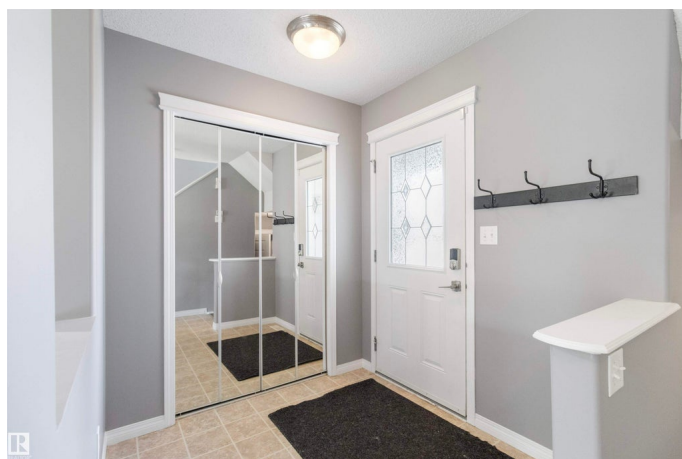
Summerwood, Sherwood Park, AB

Backing the Walking Path, this 3 BR/2.5 Bath Half Duplex in Summerwood with 1282 Sq Ft it is exactly what you have been waiting for. The Main Floor features a large entrance area, Living Room with Gas Fireplace, White Kitchen with Black Fridge, Stove & DW and an extra large pantry, French door leading to the S/W facing deck and Powder Room complete this floor. Upstairs on the first landing is a large Bonus Room with 10 foot ceilings. Second landing has a Primary Bedroom with a 3 PC Ensuite, 2 more Bedrooms and a 4 PC Main Bath. The Fully Finished basement has a Family Room, large walk in Closet and the Laundry Area. Additional features include Fresh Paint throughout, Roof 2025, High Eff Furnace, AC, newer Hot Water Tank and an attached single Garage

Built in 2006

Essential Information

MLS® #	E4454246
Price	\$424,900
Bedrooms	3
Bathrooms	2.50
Full Baths	2
Half Baths	1
Square Footage	1,281
Acres	0.00



Year Built	2006
Type	Single Family
Sub-Type	Half Duplex
Style	2 Storey
Status	Active

Community Information

Address	367 Summerton Crescent
Area	Sherwood Park
Subdivision	Summerwood
City	Sherwood Park
County	ALBERTA
Province	AB
Postal Code	T8H 2V4

Amenities

Amenities	Air Conditioner, Ceiling 10 ft., Deck, Front Porch, Hot Water Natural Gas
Parking Spaces	2
Parking	Single Garage Attached

Interior

Interior Features	ensuite bathroom
Appliances	Dishwasher-Built-In, Dryer, Garage Opener, Refrigerator, Stove-Electric, Washer, Window Coverings
Heating	Forced Air-1, Natural Gas
Fireplace	Yes
Fireplaces	Mantel
Stories	3
Has Basement	Yes
Basement	Full, Finished

Exterior

Exterior	Wood, Vinyl
Exterior Features	Backs Onto Park/Trees, Fenced, Landscaped, No Back Lane, Playground Nearby, Public Transportation, Schools, Shopping Nearby, Sloping Lot
Roof	Clay Tile
Construction	Wood, Vinyl
Foundation	Concrete Perimeter

Additional Information

Date Listed August 21st, 2025
Days on Market 1
Zoning Zone 25

DATA IS DEEMED RELIABLE BUT IS NOT GUARANTEED ACCURATE BY THE REALTORS® ASSOCIATION OF EDMONTON. COPYRIGHT 2025 BY THE REALTORS® ASSOCIATION OF EDMONTON. ALL RIGHTS RESERVED.Trademarks are owned or controlled by the Canadian Real Estate Association (CREA) and identify real estate professionals who are members of CREA (REALTOR®, REALTORS®) and/or the quality of services they provide (MLS®, Multiple Listing Service®)
Listing information last updated on August 22nd, 2025 at 4:47pm MDT