

\$604,900 - 1700 Lakeside Drive, Rural Parkland County

MLS® #E4454430

\$604,900

3 Bedroom, 2.00 Bathroom, 1,152 sqft

Rural on 1.53 Acres

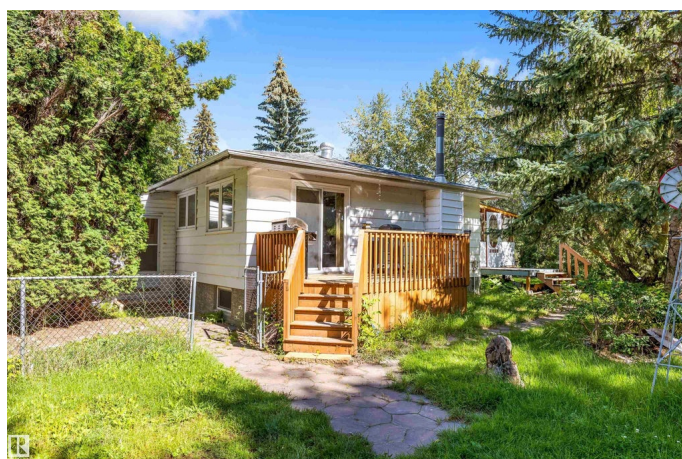
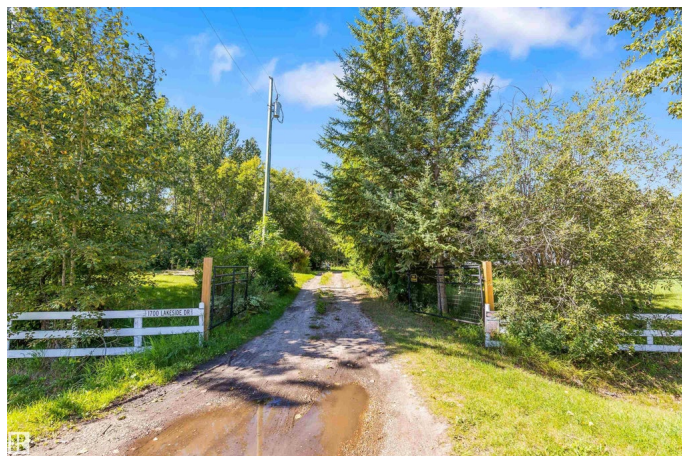
Spring Lake, Rural Parkland County, AB

TRANQUILITY MEETS FUNCTIONALITY IN AN IDYLIC SETTING! Nestled in the scenic beauty of Spring Lake, this exceptional acreage offers the perfect blend of privacy, versatility, and rural charm. Featuring A NEWLY RENOVATED SPA-LIKE BATHROOM, updated kitchen with GRANITE COUNTERTOPS, an open floor plan with a massive primary bedroom, newer windows, a HOT TUB (2021), and a fully finished basement. For those who need more space, THE LARGE SHOP on the property is a dream come true. With soaring ceilings and the potential for 4 doors, it easily accommodates large equipment, trailers, or even a boat. Located minutes from the lake itself, youâ€™ll have easy access to fishing, paddle-boarding, and lakeside trails. Say goodbye to city cramp, SAY HELLO TO THE COUNTRY!

Built in 2016

Essential Information

MLS® #	E4454430
Price	\$604,900
Bedrooms	3
Bathrooms	2.00
Full Baths	2
Square Footage	1,152
Acres	1.53



Year Built	2016
Type	Rural
Sub-Type	Detached Single Family
Style	Bungalow
Status	Active

Community Information

Address	1700 Lakeside Drive
Area	Rural Parkland County
Subdivision	Spring Lake
City	Rural Parkland County
County	ALBERTA
Province	AB
Postal Code	T7Z 2V9

Amenities

Features	Deck, Hot Tub, Hot Water Tankless, Lake Privileges
----------	--

Interior

Heating	Forced Air-1, Natural Gas
Stories	2
Has Basement	Yes
Basement	Full, Finished

Exterior

Exterior	Wood
Exterior Features	Fruit Trees/Shrubs, Landscaped, Playground Nearby, Schools, Treed Lot
Construction	Wood
Foundation	Concrete Perimeter

Additional Information

Date Listed	August 23rd, 2025
Zoning	Zone 94

DATA IS DEEMED RELIABLE BUT IS NOT GUARANTEED ACCURATE BY THE REALTORS® ASSOCIATION OF EDMONTON. COPYRIGHT 2025 BY THE REALTORS® ASSOCIATION OF EDMONTON. ALL RIGHTS RESERVED. Trademarks are owned or controlled by the Canadian Real Estate Association (CREA) and identify real estate professionals who are members of CREA (REALTOR®, REALTORS®) and/or the quality of services they provide (MLS®, Multiple Listing Service®)

Listing information last updated on August 23rd, 2025 at 4:32pm MDT