

\$225,000 - 418 13710 150 Avenue, Edmonton

MLS® #E4454882

\$225,000

2 Bedroom, 2.00 Bathroom, 1,079 sqft

Condo / Townhouse on 0.00 Acres

Cumberland, Edmonton, AB

Very private condo! Welcome to this gorgeous Top floor TWO bedroom, TWO bathroom condo, with FLEX space and in-suite Laundry, TWO parking stalls (one underground/one surface), in the wonderful building of Skyview Landing. You are guaranteed to fall in love with this Massive (1078.97), TOP floor, CORNER unit with wrap around patio with composite decking overlooking your private green space is a very rare find in the condo market. The bright kitchen has rich maple cabinets, stainless steel/black appliances, granite breakfast bar and dining area. The large open concept living room offers tons of natural light from the abundance of windows. The master bedroom has a walk through closet plus 3pc ensuite. This condo comes complete with not only a second bedroom but a flex space (perfect for a home office). Close to all amenities and easily the best location in the building make this a perfect place to call home. The building also boasts an exercise room and Condo fee's include heat and water.

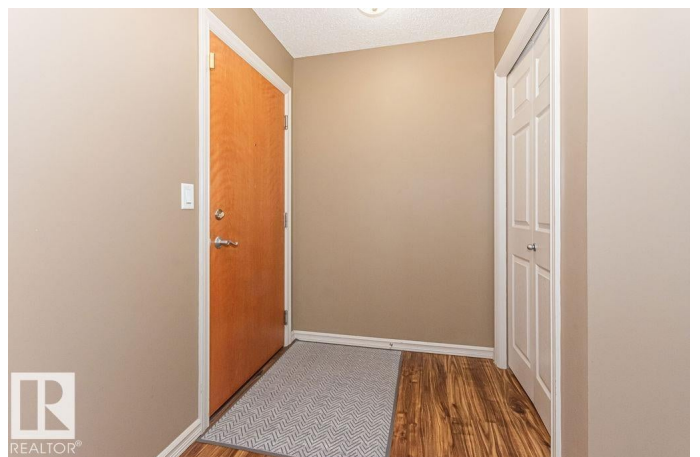
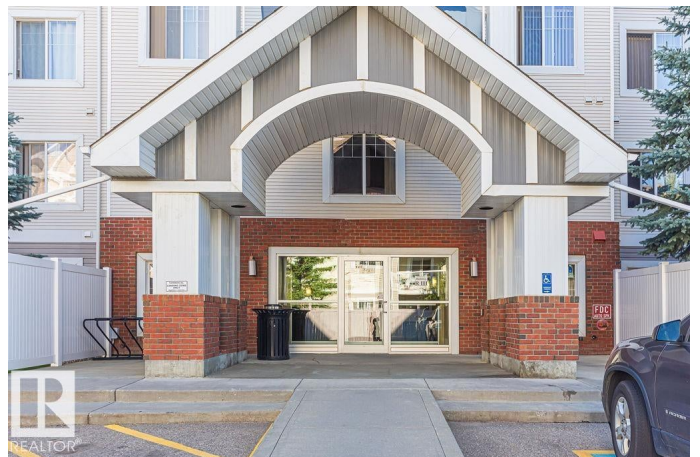
Built in 2006

Essential Information

MLS® # E4454882

Price \$225,000

Bedrooms 2



Bathrooms	2.00
Full Baths	2
Square Footage	1,079
Acres	0.00
Year Built	2006
Type	Condo / Townhouse
Sub-Type	Lowrise Apartment
Style	Single Level Apartment
Status	Active

Community Information

Address	418 13710 150 Avenue
Area	Edmonton
Subdivision	Cumberland
City	Edmonton
County	ALBERTA
Province	AB
Postal Code	T6V 0B2

Amenities

Amenities	Exercise Room, Parking-Plug-Ins, Parking-Visitor, Security Door, Storage-In-Suite
Parking	Stall, Underground

Interior

Interior Features	ensuite bathroom
Appliances	Dishwasher-Built-In, Microwave Hood Fan, Refrigerator, Stacked Washer/Dryer, Stove-Electric, Window Coverings
Heating	Baseboard, Natural Gas
# of Stories	4
Stories	1
Has Basement	Yes
Basement	None, No Basement

Exterior

Exterior	Wood, Vinyl
Exterior Features	Landscaped, Low Maintenance Landscape, Public Transportation, Schools
Roof	Asphalt Shingles

Construction	Wood, Vinyl
Foundation	Concrete Perimeter

Additional Information

Date Listed	August 27th, 2025
Days on Market	1
Zoning	Zone 27
Condo Fee	\$726

DATA IS DEEMED RELIABLE BUT IS NOT GUARANTEED ACCURATE BY THE REALTORS® ASSOCIATION OF EDMONTON. COPYRIGHT 2025 BY THE REALTORS® ASSOCIATION OF EDMONTON. ALL RIGHTS RESERVED.Trademarks are owned or controlled by the Canadian Real Estate Association (CREA) and identify real estate professionals who are members of CREA (REALTOR®, REALTORS®) and/or the quality of services they provide (MLS®, Multiple Listing Service®)

Listing information last updated on August 28th, 2025 at 9:17am MDT