

\$835,000 - 6409 29 Street, Rural Leduc County

MLS® #E4456287

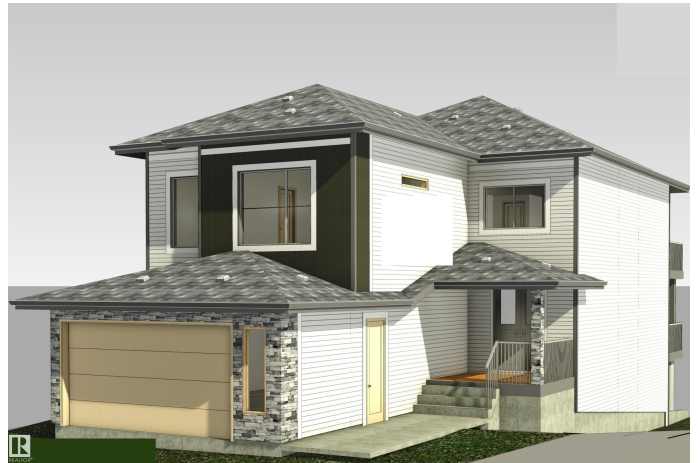
\$835,000

4 Bedroom, 3.50 Bathroom, 2,710 sqft

Rural on 0.18 Acres

Churchill Meadow, Rural Leduc County, AB

Be the very first to call this stunning 2,701 sq. ft. custom-built walkout home your own, with completion set for November 2025. Designed with families in mind, it features an impressive open-to-below layout, soaring 9 ft ceilings on the main floor, a full bedroom and bathroom along with a powder room, a gourmet kitchen with a large island, and a convenient spice kitchen with pantry. Two spacious living areas create the perfect setting for both entertaining and everyday living. Upstairs, you will love the convenience of laundry on the same level as four generous bedrooms, including a luxurious primary suite with a spa-inspired ensuite, walk-in closet, and private balcony. The unfinished walkout basement with rough-in bathroom offers endless opportunities to customize, and the deck will provide the ideal outdoor retreat once complete. Perfectly located near schools, parks, and RedTail Landing Golf Club, with quick access to Highway 2 for an easy commute, this brand-new, never-occupied home is a rare find.



Built in 2025

Essential Information

MLS® # E4456287

Price \$835,000

| | |
|----------------|------------------------|
| Bedrooms | 4 |
| Bathrooms | 3.50 |
| Full Baths | 3 |
| Half Baths | 1 |
| Square Footage | 2,710 |
| Acres | 0.18 |
| Year Built | 2025 |
| Type | Rural |
| Sub-Type | Detached Single Family |
| Style | 2 Storey |
| Status | Active |

Community Information

| | |
|-------------|--------------------|
| Address | 6409 29 Street |
| Area | Rural Leduc County |
| Subdivision | Churchill Meadow |
| City | Rural Leduc County |
| County | ALBERTA |
| Province | AB |
| Postal Code | T4X 3A6 |

Amenities

| | |
|----------|---------------------------------|
| Features | Ceiling 9 ft., Walkout Basement |
|----------|---------------------------------|

Interior

| | |
|-------------------|---------------------------|
| Interior Features | ensuite bathroom |
| Heating | Forced Air-1, Natural Gas |
| Stories | 2 |
| Has Basement | Yes |
| Basement | Full, Unfinished |

Exterior

| | |
|-------------------|--------------------|
| Exterior | Wood |
| Exterior Features | Airport Nearby |
| Construction | Wood |
| Foundation | Concrete Perimeter |

Additional Information

| | |
|-------------|---------------------|
| Date Listed | September 5th, 2025 |
|-------------|---------------------|

Days on Market 3

Zoning Zone 80

DATA IS DEEMED RELIABLE BUT IS NOT GUARANTEED ACCURATE BY THE REALTORS® ASSOCIATION OF EDMONTON. COPYRIGHT 2025 BY THE REALTORS® ASSOCIATION OF EDMONTON. ALL RIGHTS RESERVED. Trademarks are owned or controlled by the Canadian Real Estate Association (CREA) and identify real estate professionals who are members of CREA (REALTOR®, REALTORS®) and/or the quality of services they provide (MLS®, Multiple Listing Service®)

Listing information last updated on September 8th, 2025 at 9:02pm MDT