

# \$209,900 - 205 13450 114 Avenue, Edmonton

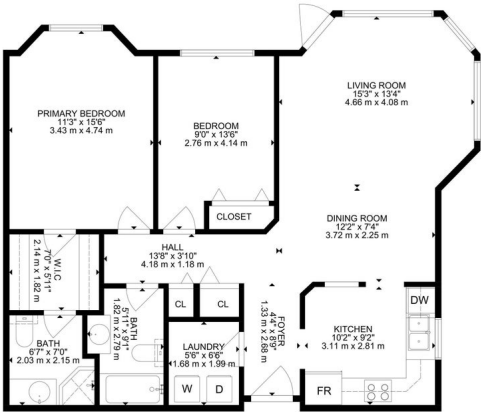
MLS® #E4456606

**\$209,900**

2 Bedroom, 2.00 Bathroom, 990 sqft  
Condo / Townhouse on 0.00 Acres

Woodcroft, Edmonton, AB

Discover the comfort and tranquility you’ve been searching for in this 50+ adults-only building. This bright and inviting 2-bedroom, 2-bathroom corner unit offers peaceful northeast views of the greenspace, perfect for enjoying your morning coffee. Inside, you’ll find a spacious living and dining area, a well-designed kitchen, in-floor heating, newer carpet, and the convenience of in-suite laundry. Enjoy a quiet lifestyle with easy access to the building’s amenities, including an exercise room and craft space. Your heated underground parking stall comes with a secure storage cage, and a car wash bay is available for added convenience. Designed for those who appreciate a safe, quiet, and low-maintenance lifestyle, this home is ready for you to move in and enjoy.



GROSS INTERNAL AREA  
TOTAL: 990 SQ. FT. 92 m²  
SIZE AND DIMENSIONS ARE APPROXIMATE, ACTUAL MAY VARY



Built in 1996

## Essential Information

MLS® #	E4456606
Price	\$209,900
Bedrooms	2
Bathrooms	2.00
Full Baths	2
Square Footage	990
Acres	0.00
Year Built	1996

Type	Condo / Townhouse
Sub-Type	Lowrise Apartment
Style	Single Level Apartment
Status	Active

### Community Information

Address	205 13450 114 Avenue
Area	Edmonton
Subdivision	Woodcroft
City	Edmonton
County	ALBERTA
Province	AB
Postal Code	T5M 4C4

### Amenities

Amenities	Car Wash, Deck, Detectors Smoke, Exercise Room, No Animal Home, No Smoking Home, Party Room, Social Rooms, Storage Cage
Parking Spaces	1
Parking	Heated, Underground

### Interior

Interior Features	ensuite bathroom
Appliances	Dishwasher-Built-In, Dryer, Fan-Ceiling, Microwave Hood Fan, Refrigerator, Stove-Electric, Washer, Window Coverings
Heating	In Floor Heat System, Natural Gas
# of Stories	4
Stories	1
Has Basement	Yes
Basement	None, No Basement

### Exterior

Exterior	Wood, Stucco
Exterior Features	Flat Site, Park/Reserve, Public Transportation, Shopping Nearby
Roof	Asphalt Shingles
Construction	Wood, Stucco
Foundation	Concrete Perimeter

### Additional Information

Date Listed	September 6th, 2025
-------------	---------------------

Days on Market	2
Zoning	Zone 07
Condo Fee	\$635

DATA IS DEEMED RELIABLE BUT IS NOT GUARANTEED ACCURATE BY THE REALTORS® ASSOCIATION OF EDMONTON. COPYRIGHT 2025 BY THE REALTORS® ASSOCIATION OF EDMONTON. ALL RIGHTS RESERVED. Trademarks are owned or controlled by the Canadian Real Estate Association (CREA) and identify real estate professionals who are members of CREA (REALTOR®, REALTORS®) and/or the quality of services they provide (MLS®, Multiple Listing Service®)

Listing information last updated on September 8th, 2025 at 11:33am MDT