

\$229,900 - 4 3010 33 Avenue, Edmonton

MLS® #E4456686

\$229,900

2 Bedroom, 2.50 Bathroom, 1,500 sqft

Condo / Townhouse on 0.00 Acres

Silver Berry, Edmonton, AB

Step into style with this stunning executive 2-storey townhouse in the sought-after Village on the Creek. With a bright, open-concept layout and showhome quality finishes, this modern gem is sure to impress. The sleek kitchen features upgraded stainless steel appliances, dark contemporary cabinetry, and custom Hunter-Douglas blinds perfect for both everyday living and entertaining. Every detail has been thoughtfully upgraded, from the wide trim and baseboard mouldings to the chic pewter light fixtures that add a touch of elegance throughout. Enjoy the convenience of a front-loading washer and dryer, and appreciate the decorator-inspired color palette that ties the entire space together. Upstairs, you'll find two spacious bedrooms, each with its own private ensuite ideal for guests, roommates, or a luxurious home office setup. A stylish 2-piece powder room is also located on the main floor for added convenience. Step outside to a generous deck, perfect for summer barbecues!

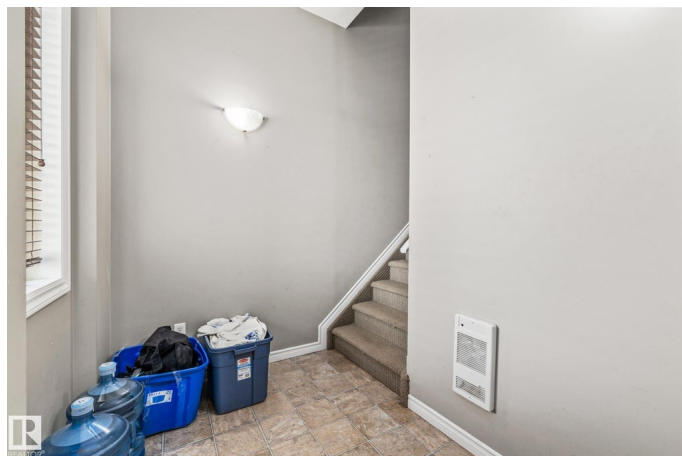
Built in 2005

Essential Information

MLS® # E4456686

Price \$229,900

Bedrooms 2



Bathrooms	2.50
Full Baths	2
Half Baths	1
Square Footage	1,500
Acres	0.00
Year Built	2005
Type	Condo / Townhouse
Sub-Type	Townhouse
Style	3 Storey
Status	Active

Community Information

Address	4 3010 33 Avenue
Area	Edmonton
Subdivision	Silver Berry
City	Edmonton
County	ALBERTA
Province	AB
Postal Code	T6T 0C3

Amenities

Amenities	On Street Parking, Deck, Detectors Smoke, Hot Water Natural Gas, Vinyl Windows
Parking	Single Garage Attached

Interior

Interior Features	ensuite bathroom
Appliances	Dishwasher-Built-In, Dryer, Microwave Hood Fan, Refrigerator, Stove-Electric, Washer, Window Coverings
Heating	Forced Air-1, Natural Gas
Stories	2
Has Basement	Yes
Basement	None, No Basement

Exterior

Exterior	Wood, Vinyl
Exterior Features	Low Maintenance Landscape, Picnic Area, Playground Nearby, Public Transportation, Schools, Shopping Nearby
Roof	Asphalt Shingles

Construction	Wood, Vinyl
Foundation	Concrete Perimeter

Additional Information

Date Listed	September 8th, 2025
Days on Market	2
Zoning	Zone 30
Condo Fee	\$310

DATA IS DEEMED RELIABLE BUT IS NOT GUARANTEED ACCURATE BY THE REALTORS® ASSOCIATION OF EDMONTON. COPYRIGHT 2025 BY THE REALTORS® ASSOCIATION OF EDMONTON. ALL RIGHTS RESERVED.Trademarks are owned or controlled by the Canadian Real Estate Association (CREA) and identify real estate professionals who are members of CREA (REALTOR®, REALTORS®) and/or the quality of services they provide (MLS®, Multiple Listing Service®)

Listing information last updated on September 10th, 2025 at 6:17pm MDT