

\$675,000 - 2230 Blue Jay Landing Landing, Edmonton

MLS® #E4456706

\$675,000

3 Bedroom, 2.50 Bathroom, 2,501 sqft

Single Family on 0.00 Acres

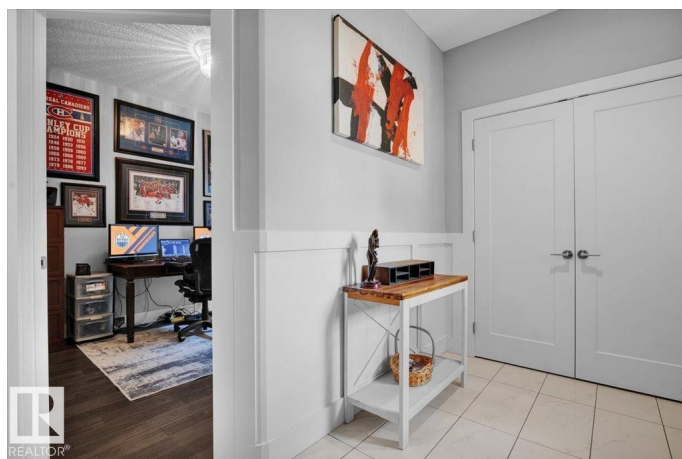
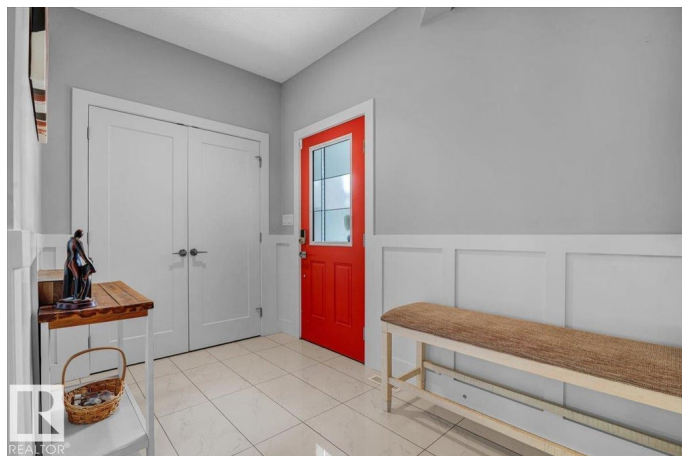
Starling, Edmonton, AB

Terrific family home located in a quiet crescent and backing onto a walking trail! Gourmet kitchen features loads of white cabinets, a huge island, built in appliances, gas range, walk thru pantry, granite counters, wine cooler and more. Stunning great room with open to below coffered ceiling. Huge mud room/laundry room. Main floor den/flex room. Spacious primary bedroom features a large walk in closet and a large ensuite with his/her sinks, walk in shower, granite counters and jetted tub. Numerous upgrades include marble and hardwood flooring, wainscoting, upgraded lighting, central AC, heated garage, raised deck with gas connection and more. For more details please visit the REALTOR®'s Website.

Built in 2017

Essential Information

MLS® #	E4456706
Price	\$675,000
Bedrooms	3
Bathrooms	2.50
Full Baths	2
Half Baths	1
Square Footage	2,501
Acres	0.00



Year Built	2017
Type	Single Family
Sub-Type	Detached Single Family
Style	2 Storey
Status	Active

Community Information

Address	2230 Blue Jay Landing Landing
Area	Edmonton
Subdivision	Starling
City	Edmonton
County	ALBERTA
Province	AB
Postal Code	T5S 0H8

Amenities

Amenities	Air Conditioner, Deck
Parking Spaces	4
Parking	Double Garage Attached, Heated

Interior

Interior Features	ensuite bathroom
Appliances	Alarm/Security System, Dishwasher-Built-In, Dryer, Garage Control, Garage Opener, Oven-Microwave, Refrigerator, Stove-Gas, Washer, Window Coverings, Wine/Beverage Cooler
Heating	Forced Air-1, Natural Gas
Stories	2
Has Basement	Yes
Basement	Full, Unfinished

Exterior

Exterior	Wood, Stone
Exterior Features	Fenced, Golf Nearby, Landscaped, Playground Nearby, Public Swimming Pool, Public Transportation, Schools, Shopping Nearby, Ski Hill Nearby
Roof	Asphalt Shingles
Construction	Wood, Stone
Foundation	Concrete Perimeter

School Information

Elementary	David Thomas/Annunication
Middle	David Thomas/St. Thomas M
High	Jasper Place/St.Francis

Additional Information

Date Listed	September 8th, 2025
Days on Market	1
Zoning	Zone 59

DATA IS DEEMED RELIABLE BUT IS NOT GUARANTEED ACCURATE BY THE REALTORS® ASSOCIATION OF EDMONTON. COPYRIGHT 2025 BY THE REALTORS® ASSOCIATION OF EDMONTON. ALL RIGHTS RESERVED.Trademarks are owned or controlled by the Canadian Real Estate Association (CREA) and identify real estate professionals who are members of CREA (REALTOR®, REALTORS®) and/or the quality of services they provide (MLS®, Multiple Listing Service®)

Listing information last updated on September 9th, 2025 at 7:17am MDT