

\$429,000 - 9340 180a Avenue, Edmonton

MLS® #E4457257

\$429,000

3 Bedroom, 2.00 Bathroom, 1,070 sqft

Single Family on 0.00 Acres

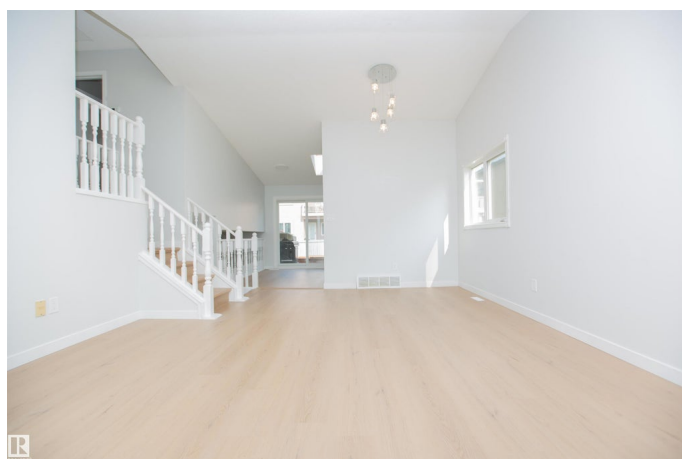
Lago Lindo, Edmonton, AB

Welcome to your dream home! Nestled in the desirable community of Lago Lindo, this fully renovated 4-level split offers over 2,000 sq. ft. of stylish living space. Updates include new vinyl flooring, modern kitchen and bathroom cabinetry with sinks, sleek lighting, and fresh paint throughout. The bright main level boasts vaulted ceilings, a bay window, and a brand-new kitchen with stainless appliances. Upstairs features spacious bedrooms, including a primary with direct access to the updated bath with soaker tub and separate shower. The lower-level family room offers a cozy fireplace, perfect for gatherings. Other recent updates include newer roof shingles, furnace, and HWT. Outside, enjoy a fully fenced yard with a large 2-tiered deck. With 3 bedrooms, 2 full bathrooms, and a double attached garage, this move-in ready home in a family-friendly neighborhood is available for quick possession!

Built in 1987

Essential Information

MLS® #	E4457257
Price	\$429,000
Bedrooms	3
Bathrooms	2.00
Full Baths	2



Square Footage	1,070
Acres	0.00
Year Built	1987
Type	Single Family
Sub-Type	Detached Single Family
Style	4 Level Split
Status	Active

Community Information

Address	9340 180a Avenue
Area	Edmonton
Subdivision	Lago Lindo
City	Edmonton
County	ALBERTA
Province	AB
Postal Code	T5Z 2J3

Amenities

Amenities	Deck, Exterior Walls- 2"x6", No Animal Home, No Smoking Home, Skylight, Vaulted Ceiling
Parking	Double Garage Attached

Interior

Interior Features	ensuite bathroom
Appliances	Dryer, Refrigerator, Stove-Electric, Washer
Heating	Forced Air-1, Natural Gas
Fireplaces	Glass Door, Mantel
Stories	3
Has Basement	Yes
Basement	Full, Partially Finished

Exterior

Exterior	Wood, Asphalt
Exterior Features	Fenced, Flat Site, Fruit Trees/Shrubs, Landscaped, No Back Lane, Schools, Shopping Nearby
Roof	Asphalt Shingles
Construction	Wood, Asphalt
Foundation	Concrete Perimeter

School Information

Elementary	Lago Lindo School
Middle	Dickinsfield School
High	Queen Elizabeth

Additional Information

Date Listed	September 11th, 2025
Days on Market	1
Zoning	Zone 28

DATA IS DEEMED RELIABLE BUT IS NOT GUARANTEED ACCURATE BY THE REALTORS® ASSOCIATION OF EDMONTON. COPYRIGHT 2025 BY THE REALTORS® ASSOCIATION OF EDMONTON. ALL RIGHTS RESERVED.Trademarks are owned or controlled by the Canadian Real Estate Association (CREA) and identify real estate professionals who are members of CREA (REALTOR®, REALTORS®) and/or the quality of services they provide (MLS®, Multiple Listing Service®)

Listing information last updated on September 12th, 2025 at 4:02am MDT