

\$599,500 - 15827 10 Avenue, Edmonton

MLS® #E4457269

\$599,500

5 Bedroom, 3.50 Bathroom, 2,086 sqft

Single Family on 0.00 Acres

Glenridding Heights, Edmonton, AB

This stunning 4 beds fully finished basement with double attached garage home located in the quiet Glenridding Heights offers an open-concept main floor with rich hardwood flooring throughout the kitchen, dining and living room. The south-facing backyard floods the home with natural light, while the gourmet kitchen features quartz countertops, high-end stainless steel appliances, tile backsplash & a large corner pantry. The spacious dining area leads to a large deck thru the sliding patio door. A convenient powder room & laundry room with access to the double attached garage complete the main level. Upstairs, a bright bonus family room with high ceilings & large window offers a fantastic space to relax. The primary suite includes a walk-in closet & a luxurious 5-piece ensuite with double sinks & a deep soaker tub. 3 additional bedrooms & a full bathroom complete the upper level. The fully finished basement adds even more living space with a great sized rec room, a 5th bedroom, & a full bathroom.

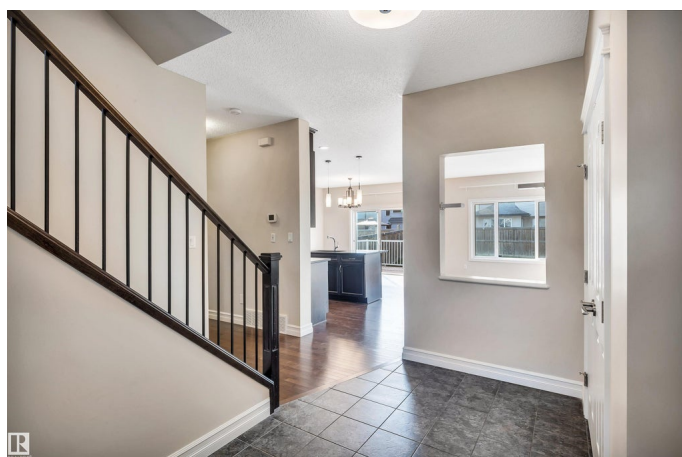
Built in 2013

Essential Information

MLS® # E4457269

Price \$599,500

Bedrooms 5



Bathrooms	3.50
Full Baths	3
Half Baths	1
Square Footage	2,086
Acres	0.00
Year Built	2013
Type	Single Family
Sub-Type	Detached Single Family
Style	2 Storey
Status	Active

Community Information

Address	15827 10 Avenue
Area	Edmonton
Subdivision	Glenridding Heights
City	Edmonton
County	ALBERTA
Province	AB
Postal Code	T6W 2H2

Amenities

Amenities	Deck, Detectors Smoke
Parking	Double Garage Attached
Is Waterfront	Yes

Interior

Interior Features	ensuite bathroom
Appliances	Dishwasher-Built-In, Dryer, Garage Control, Garage Opener, Hood Fan, Refrigerator, Storage Shed, Stove-Electric, Washer
Heating	Forced Air-1, Natural Gas
Fireplace	Yes
Fireplaces	Stone Facing
Stories	2
Has Basement	Yes
Basement	Full, Finished

Exterior

Exterior	Wood, Vinyl
Exterior Features	Golf Nearby, Park/Reserve, Playground Nearby, Public Transportation,

	Shopping Nearby, Stream/Pond
Roof	Asphalt Shingles
Construction	Wood, Vinyl
Foundation	Concrete Perimeter

Additional Information

Date Listed	September 11th, 2025
Days on Market	1
Zoning	Zone 56

DATA IS DEEMED RELIABLE BUT IS NOT GUARANTEED ACCURATE BY THE REALTORS® ASSOCIATION OF EDMONTON. COPYRIGHT 2025 BY THE REALTORS® ASSOCIATION OF EDMONTON. ALL RIGHTS RESERVED. Trademarks are owned or controlled by the Canadian Real Estate Association (CREA) and identify real estate professionals who are members of CREA (REALTOR®, REALTORS®) and/or the quality of services they provide (MLS®, Multiple Listing Service®)

Listing information last updated on September 12th, 2025 at 4:02am MDT