

## \$594,900 - 18 Meadowlink Point(e), Spruce Grove

MLS® #E4458453

**\$594,900**

3 Bedroom, 2.50 Bathroom, 2,083 sqft

Single Family on 0.00 Acres

McLaughlin\_SPGR, Spruce Grove, AB

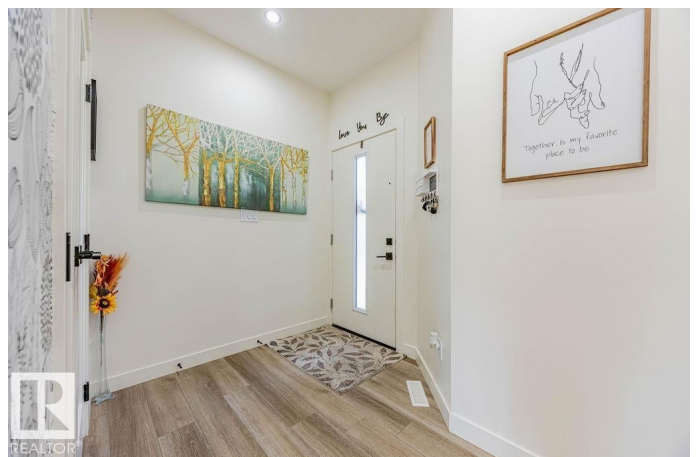
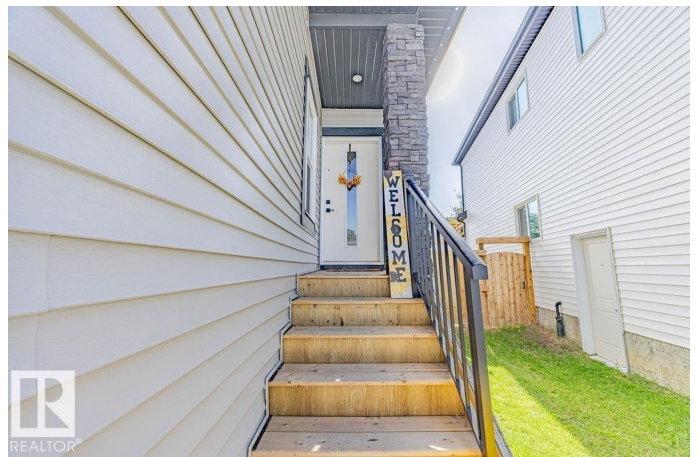
WOW! Are you looking for a modern home that's upgraded throughout & move in ready w/ SEPARATE ENTRANCE? Craving cul-de-sac living & a SOUTH FACING BACKYARD that's fully fenced w/ deck & BBQ gasline ready to go? This is THE ONE! The open concept main floor has stunning 2 storey ceilings & a spacious great room w/ fireplace. Opening onto the large kitchen, you'll enjoy entertaining with your large island & a ton of built in shelving. Check out the upgraded finishes at every turn including black stainless steel appliances (goodbye fingerprints!). The walkthrough pantry takes you towards the oversized, heated, truck friendly garage. You'll also find a spacious den on the main floor & half bath. Upstairs, the primary suite has stunning ceiling details, a walk-in closet & upgraded ensuite w/ dual sinks, a glass shower & soaker tub. The 2nd floor also has a central bonus room, bedrooms 2 & 3 plus the main bath & laundry. Upgrades include: 9' main ceilings, A/C, gemstone lights & storage shed. Flexible possession.

Built in 2023

### Essential Information

MLS® # E4458453

Price \$594,900



Bedrooms	3
Bathrooms	2.50
Full Baths	2
Half Baths	1
Square Footage	2,083
Acres	0.00
Year Built	2023
Type	Single Family
Sub-Type	Detached Single Family
Style	2 Storey
Status	Active

### Community Information

Address	18 Meadowlink Point(e)
Area	Spruce Grove
Subdivision	McLaughlin_SPGR
City	Spruce Grove
County	ALBERTA
Province	AB
Postal Code	T7X 3G3

### Amenities

Amenities	Air Conditioner, Ceiling 9 ft., Closet Organizers, Deck, Smart/Program. Thermostat
Parking	Double Garage Attached, Over Sized

### Interior

Interior Features	ensuite bathroom
Appliances	Air Conditioning-Central, Dishwasher-Built-In, Dryer, Garage Control, Garage Opener, Hood Fan, Oven-Built-In, Oven-Microwave, Refrigerator, Storage Shed, Stove-Countertop Electric, Washer, Window Coverings, TV Wall Mount, Garage Heater
Heating	Forced Air-1, Natural Gas
Fireplace	Yes
Fireplaces	Mantel
Stories	2
Has Basement	Yes
Basement	Full, Unfinished

### Exterior

Exterior	Wood, Vinyl
Exterior Features	Fenced, Landscaped, Low Maintenance Landscape, Playground Nearby, Public Transportation, Schools, Shopping Nearby
Roof	Asphalt Shingles
Construction	Wood, Vinyl
Foundation	Concrete Perimeter

### **School Information**

Elementary	Millgrove
Middle	Woodhaven
High	Spruce Grove Composite

### **Additional Information**

Date Listed	September 18th, 2025
Days on Market	1
Zoning	Zone 91

DATA IS DEEMED RELIABLE BUT IS NOT GUARANTEED ACCURATE BY THE REALTORS® ASSOCIATION OF EDMONTON. COPYRIGHT 2025 BY THE REALTORS® ASSOCIATION OF EDMONTON. ALL RIGHTS RESERVED. Trademarks are owned or controlled by the Canadian Real Estate Association (CREA) and identify real estate professionals who are members of CREA (REALTOR®, REALTORS®) and/or the quality of services they provide (MLS®, Multiple Listing Service®)

Listing information last updated on September 19th, 2025 at 11:32am MDT