

## \$450,000 - 15128 141 Street, Edmonton

MLS® #E4458799

**\$450,000**

3 Bedroom, 2.50 Bathroom, 1,517 sqft

Single Family on 0.00 Acres

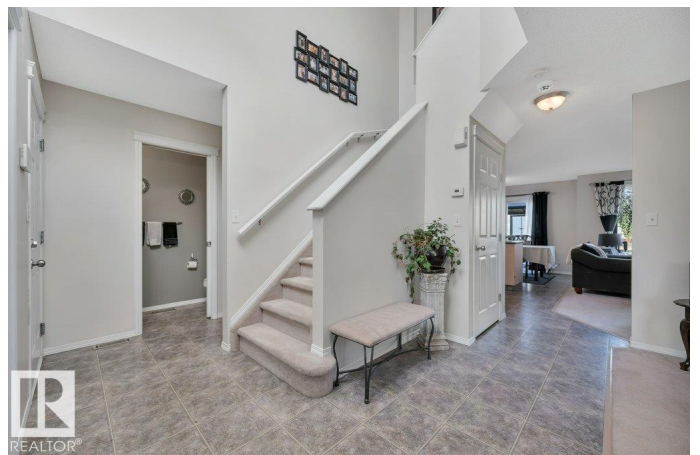
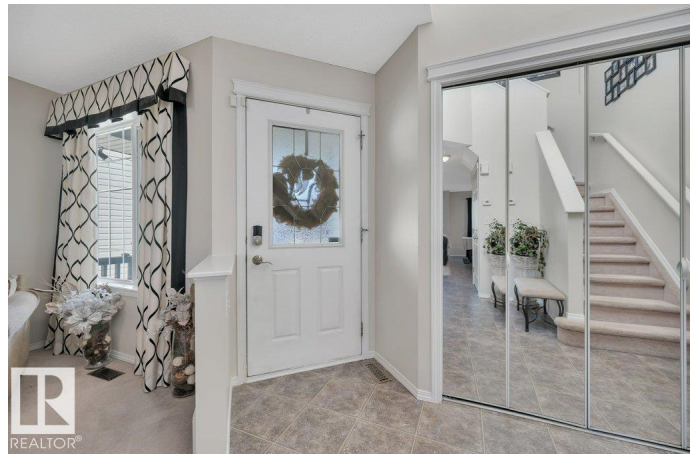
Cumberland, Edmonton, AB

This beautiful 3-bedroom, 2.5-bathroom home is perfectly located in the highly sought-after community of Cumberland. Featuring a double attached garage, this home offers both convenience and functionality. Step inside to find a warm and inviting family room with a cozy fireplace, perfect for relaxing evenings. The kitchen boasts stainless steel appliances, ample cabinet space, and an open layout that flows into the dining area – ideal for family meals and entertaining. Upstairs, the spacious primary bedroom includes a walk-in closet and private ensuite, creating a perfect retreat. Two additional bedrooms and another full bath provide plenty of space for family or guests. Enjoy the outdoors with a 2-tier deck overlooking the backyard – great for summer barbecues or morning coffee. Located close to schools, shopping, restaurants, public transportation, parks, and walking trails along quick access to Anthony Henday Drive and Mark Messier Trail. This home has it all.

Built in 2004

### Essential Information

MLS® #	E4458799
Price	\$450,000
Bedrooms	3
Bathrooms	2.50



Full Baths	2
Half Baths	1
Square Footage	1,517
Acres	0.00
Year Built	2004
Type	Single Family
Sub-Type	Detached Single Family
Style	2 Storey
Status	Active

### Community Information

Address	15128 141 Street
Area	Edmonton
Subdivision	Cumberland
City	Edmonton
County	ALBERTA
Province	AB
Postal Code	T6V 1V1

### Amenities

Amenities	Deck, Vinyl Windows
Parking Spaces	4
Parking	Double Garage Attached

### Interior

Interior Features	ensuite bathroom
Appliances	Dishwasher-Built-In, Dryer, Garage Control, Garage Opener, Hood Fan, Refrigerator, Storage Shed, Stove-Electric, Washer, Window Coverings
Heating	Forced Air-1, Natural Gas
Fireplace	Yes
Fireplaces	Mantel, Tile Surround
Stories	2
Has Basement	Yes
Basement	Full, Unfinished

### Exterior

Exterior	Wood, Vinyl
Exterior Features	Fenced, Landscaped, Public Transportation, Schools, Shopping Nearby
Roof	Asphalt Shingles

Construction	Wood, Vinyl
Foundation	Concrete Perimeter

**Additional Information**

Date Listed	September 20th, 2025
Days on Market	2
Zoning	Zone 27

DATA IS DEEMED RELIABLE BUT IS NOT GUARANTEED ACCURATE BY THE REALTORS® ASSOCIATION OF EDMONTON. COPYRIGHT 2025 BY THE REALTORS® ASSOCIATION OF EDMONTON. ALL RIGHTS RESERVED.Trademarks are owned or controlled by the Canadian Real Estate Association (CREA) and identify real estate professionals who are members of CREA (REALTOR®, REALTORS®) and/or the quality of services they provide (MLS®, Multiple Listing Service®)

Listing information last updated on September 22nd, 2025 at 1:02am MDT