

## \$82,900 - 102 12223 82 Street, Edmonton

MLS® #E4458842

**\$82,900**

1 Bedroom, 1.00 Bathroom, 484 sqft

Condo / Townhouse on 0.00 Acres

Elmwood Park, Edmonton, AB

Investor alert! Affordable 1 bedroom apartment condo located minutes from downtown, NAIT campus. Functional layout with light laminate flooring throughout -a great start to your climb on the property ladder.

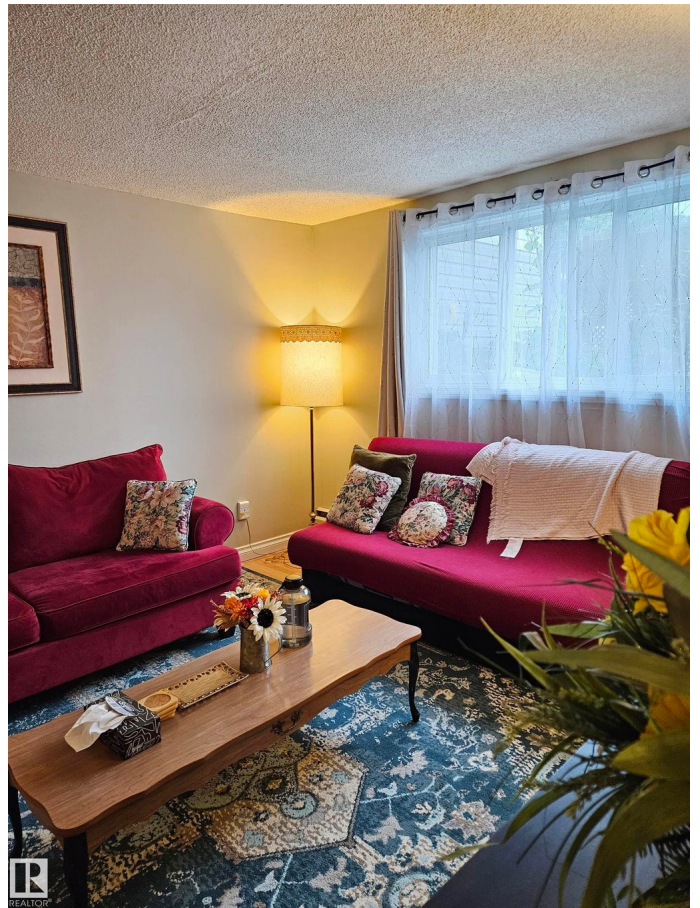
Built in 1968

### Essential Information

MLS® #	E4458842
Price	\$82,900
Bedrooms	1
Bathrooms	1.00
Full Baths	1
Square Footage	484
Acres	0.00
Year Built	1968
Type	Condo / Townhouse
Sub-Type	Lowrise Apartment
Style	Single Level Apartment
Status	Active

### Community Information

Address	102 12223 82 Street
Area	Edmonton
Subdivision	Elmwood Park
City	Edmonton
County	ALBERTA



Province	AB
Postal Code	T5B 2W9

### Amenities

Amenities	On Street Parking, Patio
Parking Spaces	1
Parking	Stall

### Interior

Appliances	Dishwasher-Built-In, Microwave Hood Fan, Refrigerator, Stove-Electric
Heating	Hot Water, Natural Gas
# of Stories	3
Stories	3
Has Basement	Yes
Basement	None, No Basement

### Exterior

Exterior	Wood, Brick, Vinyl
Exterior Features	Back Lane, Flat Site, Golf Nearby, Landscaped, Park/Reserve, Playground Nearby, Public Swimming Pool, Public Transportation, Schools, Shopping Nearby
Roof	Flat
Construction	Wood, Brick, Vinyl
Foundation	Concrete Perimeter

### Additional Information

Date Listed	September 21st, 2025
Days on Market	1
Zoning	Zone 05
Condo Fee	\$369

DATA IS DEEMED RELIABLE BUT IS NOT GUARANTEED ACCURATE BY THE REALTORS® ASSOCIATION OF EDMONTON. COPYRIGHT 2025 BY THE REALTORS® ASSOCIATION OF EDMONTON. ALL RIGHTS RESERVED. Trademarks are owned or controlled by the Canadian Real Estate Association (CREA) and identify real estate professionals who are members of CREA (REALTOR®, REALTORS®) and/or the quality of services they provide (MLS®, Multiple Listing Service®)

Listing information last updated on September 21st, 2025 at 11:02pm MDT