

\$735,000 - 46 52224 Rge Road 275, Rural Parkland County

MLS® #E4459074

\$735,000

4 Bedroom, 2.50 Bathroom, 2,221 sqft

Rural on 3.51 Acres

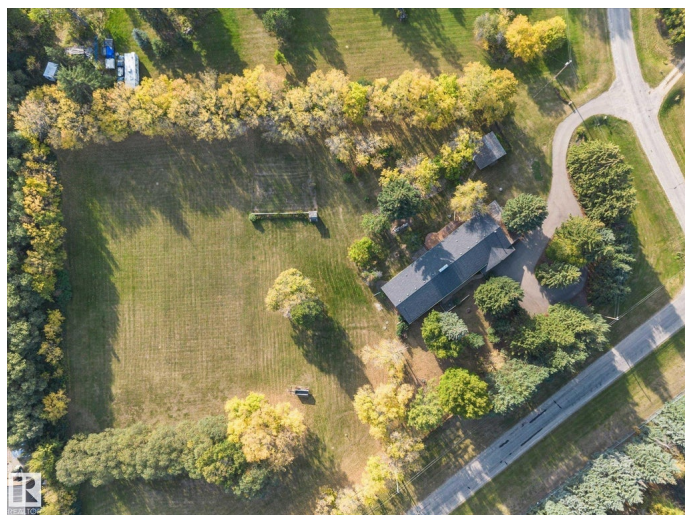
Peterbern Estates, Rural Parkland County, AB

Welcome to a home where timeless charm meets unmatched functionality. This 2200+ sq ft bungalow in Peterbern Estates is a rare gem that's been cherished by its original owners since day one. Nestled on 3.5+ acres just minutes south of Stony Plain and Spruce Grove, with pavement right to your doorstep, this property radiates pride of ownership inside and out. Step into a space where craftsmanship shines, offering 4 bedrooms, 2.5 bathrooms above grade, and multiple living and recreation areas throughout designed for comfort and connection. Cozy up beside one of three fireplaces, enjoy the covered porch, and take advantage of abundant storage both inside and out, including a spacious shed and an oversized heated garage with a convenient workbench area. Brick accents add character throughout, making this home as beautiful as it is practical. This isn't just a home, it's your acreage adventure waiting to happen!

Built in 1976

Essential Information

MLS® #	E4459074
Price	\$735,000
Bedrooms	4
Bathrooms	2.50



Full Baths	2
Half Baths	1
Square Footage	2,221
Acres	3.51
Year Built	1976
Type	Rural
Sub-Type	Detached Single Family
Style	Bungalow
Status	Active

Community Information

Address	46 52224 Rge Road 275
Area	Rural Parkland County
Subdivision	Peterbern Estates
City	Rural Parkland County
County	ALBERTA
Province	AB
Postal Code	T7Y 2V7

Amenities

Features	Air Conditioner, See Remarks
----------	------------------------------

Interior

Interior Features	ensuite bathroom
Heating	Forced Air-2, Natural Gas
Fireplace	Yes
Stories	2
Has Basement	Yes
Basement	Full, Finished

Exterior

Exterior	Wood
Exterior Features	Corner Lot, Flat Site, Landscaped, Not Fenced, See Remarks
Construction	Wood
Foundation	Concrete Perimeter

Additional Information

Date Listed	September 23rd, 2025
Days on Market	2

Zoning

Zone 90

DATA IS DEEMED RELIABLE BUT IS NOT GUARANTEED ACCURATE BY THE REALTORS® ASSOCIATION OF EDMONTON. COPYRIGHT 2025 BY THE REALTORS® ASSOCIATION OF EDMONTON. ALL RIGHTS RESERVED. Trademarks are owned or controlled by the Canadian Real Estate Association (CREA) and identify real estate professionals who are members of CREA (REALTOR®, REALTORS®) and/or the quality of services they provide (MLS®, Multiple Listing Service®)

Listing information last updated on September 25th, 2025 at 4:02am MDT