

Courtesy Of . Kirandeep Singh Of MaxWell Polaris

\$1,999,900 - 230 23020 Twp522, Rural Strathcona County

MLS® #E4459471

\$1,999,900

6 Bedroom, 6.00 Bathroom, 5,120 sqft

Rural on 2.40 Acres

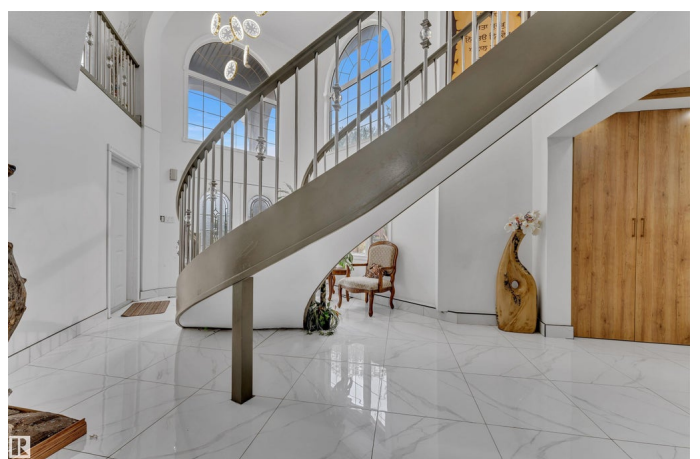
Sconalglen & Park Estates, Rural Strathcona County, AB

Stunning Fully Renovated Country Residential Home â€“ 6 Bed | 5 Bath | 2.4 Acres | Over 5,100 Sq.Ft. Welcome to this immaculate, fully renovated corner-lot estate offering over 5,100 sq. ft. of luxurious living space on a beautifully landscaped and fully fenced 2.40-acre lot. Located just 5 minutes from White mud Drive and 17 Street, this exceptional property offers the perfect blend of privacy and convenience â€” close to schools, shopping, and all major amenities. Property Features 6 spacious bedrooms, 5 full bathrooms, Triple attached garage with dedicated RV parking â€” ideal for projects or storage Massive paved driveway with ample parking. Fully landscaped and fenced with gated entry Interior Highlights Gourmet kitchen with high-end appliances & quartz countertops. Separate spice kitchen with additional prep space 3 large living areas â€” perfect for entertaining Theatre room, fully equipped bar, and exercise room Private prayer room and upper-level balcony. Don't miss this House!

Built in 1977

Essential Information

MLS® # E4459471



Price	\$1,999,900
Bedrooms	6
Bathrooms	6.00
Full Baths	6
Square Footage	5,120
Acres	2.40
Year Built	1977
Type	Rural
Sub-Type	Detached Single Family
Style	Hillside Bungalow
Status	Active

Community Information

Address	230 23020 Twp522
Area	Rural Strathcona County
Subdivision	Sconalglen & Park Estates
City	Rural Strathcona County
County	ALBERTA
Province	AB
Postal Code	T8B 1H8

Amenities

Features	Bar, Exercise Room, Workshop, Rooftop Deck/Patio
----------	--

Interior

Interior Features	ensuite bathroom
Heating	Forced Air-2, Natural Gas
Stories	2
Has Basement	Yes
Basement	Full, Finished

Exterior

Exterior	Wood
Exterior Features	Airport Nearby, Corner Lot, Fenced, Landscaped
Construction	Wood
Foundation	Preserved Wood

Additional Information

Date Listed	September 25th, 2025
-------------	----------------------

Zoning

Zone 80

DATA IS DEEMED RELIABLE BUT IS NOT GUARANTEED ACCURATE BY THE REALTORS® ASSOCIATION OF EDMONTON. COPYRIGHT 2025 BY THE REALTORS® ASSOCIATION OF EDMONTON. ALL RIGHTS RESERVED. Trademarks are owned or controlled by the Canadian Real Estate Association (CREA) and identify real estate professionals who are members of CREA (REALTOR®, REALTORS®) and/or the quality of services they provide (MLS®, Multiple Listing Service®)

Listing information last updated on September 25th, 2025 at 8:17pm MDT