

\$849,000 - 2729 64 Avenue, Rural Leduc County

MLS® #E4459559

\$849,000

5 Bedroom, 4.00 Bathroom, 2,526 sqft
Rural on 0.12 Acres

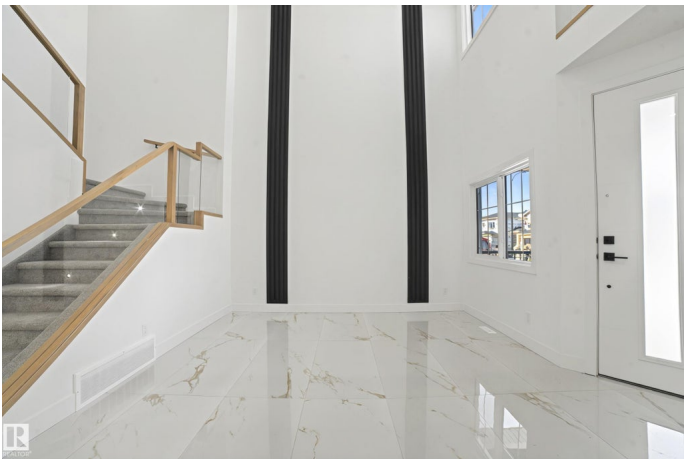
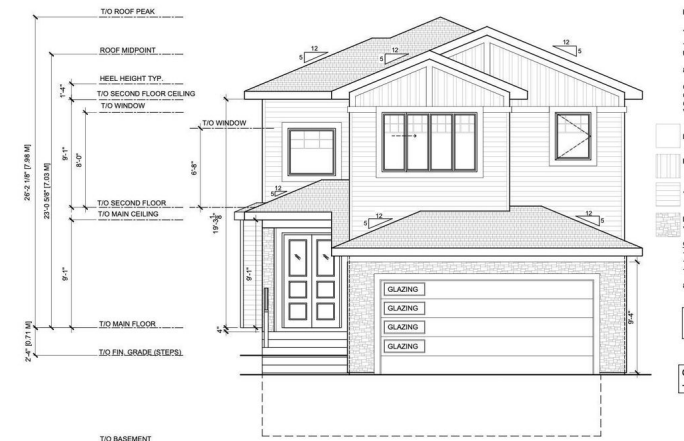
Churchill Meadow, Rural Leduc County, AB

Welcome to Churchill Meadows, Leduc County’s premium community—just minutes from the airport and all major amenities! This stunning home offers over 2500 sq. ft. of living space on a generous lot with a walkout basement backing onto green space and a double front garage. Inside, enjoy soaring 9ft/10ft/20ft ceilings with open-to-below design, 2 living rooms, and a fully upgraded interior with a spice kitchen, elegant fireplace, and high-end finishes throughout. The thoughtful layout features 4 bedrooms upstairs with 3 en-suites, plus a main floor bedroom and full bath, making it ideal for multi-generational living. Complete with a side entrance and luxury details throughout, this home is the perfect blend of elegance and functionality. Please note: Photos shown are of a similar home by the same builder; finishes and layout may vary. Basement can be added for additional cost.

Built in 2025

Essential Information

MLS® #	E4459559
Price	\$849,000
Bedrooms	5
Bathrooms	4.00
Full Baths	4



Square Footage	2,526
Acres	0.12
Year Built	2025
Type	Rural
Sub-Type	Detached Single Family
Style	2 Storey
Status	Active

Community Information

Address	2729 64 Avenue
Area	Rural Leduc County
Subdivision	Churchill Meadow
City	Rural Leduc County
County	ALBERTA
Province	AB
Postal Code	T4X 3A6

Amenities

Features	On Street Parking, Ceiling 10 ft., Ceiling 9 ft., Closet Organizers, Deck, Detectors Smoke, No Animal Home, No Smoking Home, Walkout Basement, 9 ft. Basement Ceiling
----------	---

Interior

Interior Features	ensuite bathroom
Heating	Forced Air-1, Natural Gas
Stories	2
Has Suite	Yes
Has Basement	Yes
Basement	Full, Unfinished

Exterior

Exterior	Wood
Exterior Features	Airport Nearby, Backs Onto Park/Trees, Golf Nearby, Playground Nearby, Shopping Nearby
Construction	Wood
Foundation	Concrete Perimeter

Additional Information

Date Listed	September 25th, 2025
Days on Market	1

Zoning

Zone 80

DATA IS DEEMED RELIABLE BUT IS NOT GUARANTEED ACCURATE BY THE REALTORS® ASSOCIATION OF EDMONTON. COPYRIGHT 2025 BY THE REALTORS® ASSOCIATION OF EDMONTON. ALL RIGHTS RESERVED. Trademarks are owned or controlled by the Canadian Real Estate Association (CREA) and identify real estate professionals who are members of CREA (REALTOR®, REALTORS®) and/or the quality of services they provide (MLS®, Multiple Listing Service®)

Listing information last updated on September 25th, 2025 at 9:32pm MDT