

\$0 - 1055 Parsons Road, Edmonton

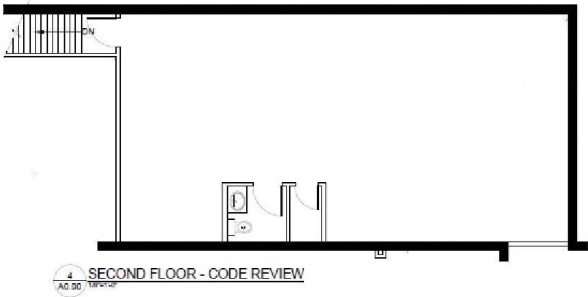
MLS® #E4460132

\$0

0 Bedroom, 0.00 Bathroom,
Office on 0.00 Acres

Ellerslie Industrial, Edmonton, AB

Built-out 2nd floor office space fronting Parsons Road. Above Anava Spa, potential uses could be complimentary to main floor, general office space or even retail. 1,055 SF. Space if finished as open space with one washroom. The site offers ample parking, shadow anchored by Save-On-Foods and close to a large SW population of residents and businesses. Next to Chaiwala and Papa Murphy's - Available immediately.



Built in 2010

Essential Information

MLS® #	E4460132
Lease Rate	\$24
Bathrooms	0.00
Acres	0.00
Year Built	2010
Type	Office
Status	Active

Community Information

Address	1055 Parsons Road
Area	Edmonton
Subdivision	Ellerslie Industrial
City	Edmonton
County	ALBERTA
Province	AB

Postal Code T6X 0X2

Exterior

Exterior Steel Frame
Construction Steel Frame

Additional Information

Date Listed September 29th, 2025
Days on Market 2
Zoning Zone 54

DATA IS DEEMED RELIABLE BUT IS NOT GUARANTEED ACCURATE BY THE REALTORS® ASSOCIATION OF EDMONTON. COPYRIGHT 2025 BY THE REALTORS® ASSOCIATION OF EDMONTON. ALL RIGHTS RESERVED.Trademarks are owned or controlled by the Canadian Real Estate Association (CREA) and identify real estate professionals who are members of CREA (REALTOR®, REALTORS®) and/or the quality of services they provide (MLS®, Multiple Listing Service®)
Listing information last updated on October 1st, 2025 at 3:17pm MDT