

\$299,900 - 16530 104 Av Nw, Edmonton

MLS® #E4460395

\$299,900

4 Bedroom, 1.00 Bathroom, 1,014 sqft

Single Family on 0.13 Acres

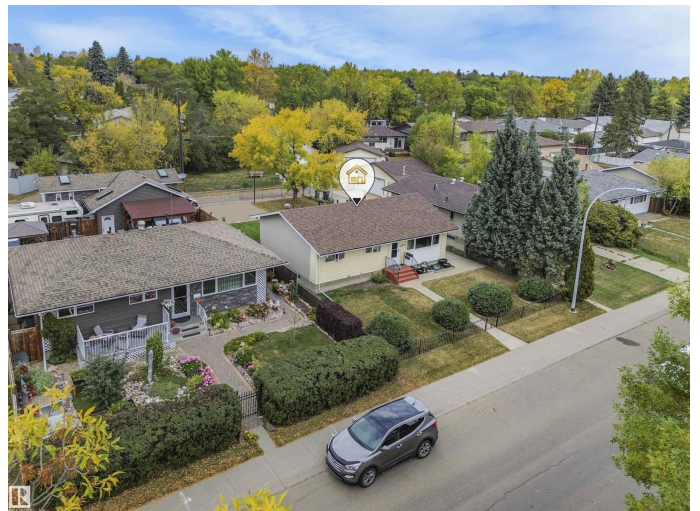
Britannia Youngstown, Edmonton, Alberta

Excellent starter home or investor opportunity! This bungalow sits on a huge 510.638 sq. metre fully fenced lot in an excellent location â€” just a 5 min walk to Youngstown School, and only steps to Mayfield Common and Gordon Drynan Park. The main level offers a spacious living room that flows seamlessly into the dining and kitchen area, plus two bedrooms, a 3-piece bathroom, and a convenient laundry room with closet. The finished basement provides even more living space with a large rec room complete with bar area, two additional bedrooms, and a storage room. Outside, enjoy a convenient covered back patio, storage shed, and parking pad. A great chance to own a well-located property with plenty of potential! (id:36535)

Built in 1959

Essential Information

Listings #	E4460395
Price	\$299,900
Bedrooms	4
Bathrooms	1.00
Square Footage	1,014
Acres	0.13
Year Built	1959
Type	Single Family
Sub-Type	Freehold
Style	Bungalow



Community Information

Address	16530 104 Av Nw
Subdivision	Britannia Youngstown
City	Edmonton
Province	Alberta
Postal Code	T5P0S7

Amenities

Amenities	Playground, Public Transit, Schools, Shopping
Features	Paved lane, Park/reserve, Lane
Parking Spaces	3
Parking	Parking Pad

Interior

Appliances	Dishwasher, Dryer, Refrigerator, Stove, Washer, Window Coverings
Heating	Forced air
# of Stories	1
Has Basement	Yes
Basement Type	Full (Finished)
Basement Development	Finished

Listing Details

Listing Office	Courtesy Of Jessie L. McCracken Of Real Broker
----------------	--



The trademarks MLS®, Multiple Listing Service® and the associated logos are owned by The Canadian Real Estate Association (CREA) and identify the quality of services provided by real estate professionals who are members of CREA. REALTOR®. Member of CREA and more.

Listing information last updated on October 6th, 2025 at 10:33pm MDT