

\$450,000 - 8508 43 Avenue, Edmonton

MLS® #E4460855

\$450,000

5 Bedroom, 2.50 Bathroom, 1,302 sqft

Single Family on 0.00 Acres

Tweddle Place, Edmonton, AB

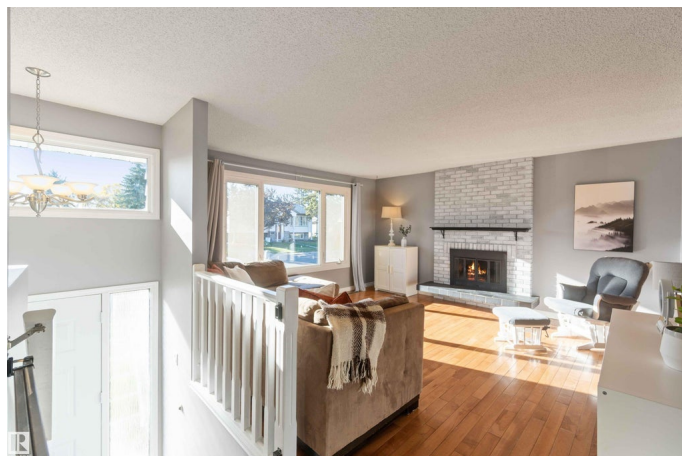
Separate entrance and a basement suite!!

This 5-bedroom bi-level in Tweddle Place has it all—two kitchens, a spacious yard, and a double detached garage. Gleaming hardwood floors flow into the kitchen with its oversized peninsula, while down the hall you’ll find three bedrooms, a beautifully renovated main bath, and a primary suite with a private 2-piece ensuite. The bright lower level, accessible from a side entrance, offers a large laundry room, two more bedrooms, and a second kitchen and living room filled with natural light from big windows. Outside, enjoy the expansive backyard—perfect for kids and pets—and the convenience of a garage to protect your car through Edmonton’s winters. All this, just minutes from schools, shopping, and the Whitemud for easy commuting! *suite is not legal*

Built in 1973

Essential Information

MLS® #	E4460855
Price	\$450,000
Bedrooms	5
Bathrooms	2.50
Full Baths	2
Half Baths	1
Square Footage	1,302



Acres	0.00
Year Built	1973
Type	Single Family
Sub-Type	Detached Single Family
Style	Bi-Level
Status	Active

Community Information

Address	8508 43 Avenue
Area	Edmonton
Subdivision	Tweddle Place
City	Edmonton
County	ALBERTA
Province	AB
Postal Code	T6K 1B1

Amenities

Amenities	Off Street Parking, On Street Parking, No Smoking Home
Parking Spaces	4
Parking	Double Garage Detached

Interior

Interior Features	ensuite bathroom
Appliances	Dishwasher-Built-In, Dryer, Garage Control, Garage Opener, Hood Fan, Washer, Window Coverings, Refrigerators-Two, Stoves-Two
Heating	Forced Air-1, Natural Gas
Fireplace	Yes
Fireplaces	Woodstove
Stories	2
Has Suite	Yes
Has Basement	Yes
Basement	Full, Finished

Exterior

Exterior	Wood, Metal, Stucco
Exterior Features	Back Lane, Fenced, Landscaped, Playground Nearby, Public Transportation, Schools, Shopping Nearby
Roof	Asphalt Shingles
Construction	Wood, Metal, Stucco

Foundation Slab

Additional Information

Date Listed October 4th, 2025

Days on Market 1

Zoning Zone 29

DATA IS DEEMED RELIABLE BUT IS NOT GUARANTEED ACCURATE BY THE REALTORS® ASSOCIATION OF EDMONTON. COPYRIGHT 2025 BY THE REALTORS® ASSOCIATION OF EDMONTON. ALL RIGHTS RESERVED.Trademarks are owned or controlled by the Canadian Real Estate Association (CREA) and identify real estate professionals who are members of CREA (REALTOR®, REALTORS®) and/or the quality of services they provide (MLS®, Multiple Listing Service®)

Listing information last updated on October 4th, 2025 at 9:32pm MDT