

# **\$750,000 - 273049 Twp Road 480, Rural Wetaskiwin County**

MLS® #E4460878

**\$750,000**

4 Bedroom, 2.50 Bathroom, 1,925 sqft

Rural on 19.99 Acres

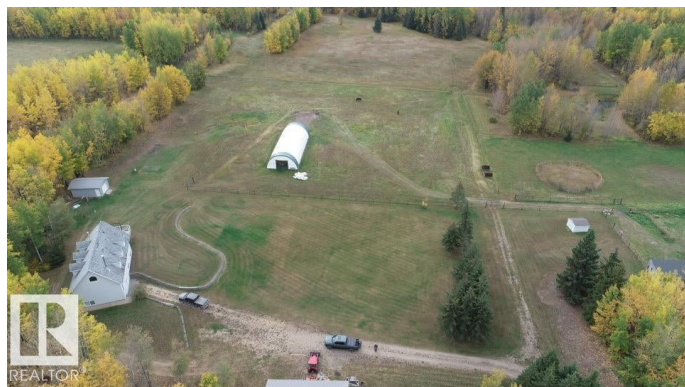
None, Rural Wetaskiwin County, AB

Set on 20 spacious acres near Wizard Lake, this property is perfectly suited for horses or hobby farm enthusiasts. The land is fully fenced with metal fencing, includes a dugout, a tarped quonset, triple garage, single garage, and multiple outbuildings for storage and flexibility. The 2-storey walkout home features vaulted ceilings, a floor-to-ceiling stone fireplace, and a renovated kitchen with granite counters and stainless steel appliances. The main floor also offers updated bathrooms, while upstairs the spiral staircase leads to a spacious primary suite with a jacuzzi ensuite. In total, there are four bedrooms, providing ample space for family and guests. Enjoy the outdoors from the large deck off the kitchen, surrounded by mature trees for privacy and natural beauty. This acreage combines modern upgrades with country living, 10 min walk to Wizard Lake.

Built in 2000

## **Essential Information**

MLS® #	E4460878
Price	\$750,000
Bedrooms	4
Bathrooms	2.50



Full Baths	2
Half Baths	1
Square Footage	1,925
Acres	19.99
Year Built	2000
Type	Rural
Sub-Type	Detached Single Family
Style	2 Storey
Status	Active

### Community Information

Address	273049 Twp Road 480
Area	Rural Wetaskiwin County
Subdivision	None
City	Rural Wetaskiwin County
County	ALBERTA
Province	AB
Postal Code	T0C 2P0

### Amenities

Features	Deck, Walkout Basement, Workshop
----------	----------------------------------

### Interior

Interior Features	ensuite bathroom
Heating	Forced Air-2, Natural Gas
Fireplace	Yes
Stories	3
Has Basement	Yes
Basement	Full, Finished

### Exterior

Exterior	Wood
Exterior Features	Cross Fenced, Fenced, Golf Nearby, Landscaped, Private Setting, Schools, Stream/Pond
Construction	Wood
Foundation	Concrete Perimeter

### Additional Information

Date Listed	October 3rd, 2025
-------------	-------------------

Days on Market 2

Zoning Zone 80

DATA IS DEEMED RELIABLE BUT IS NOT GUARANTEED ACCURATE BY THE REALTORS® ASSOCIATION OF EDMONTON. COPYRIGHT 2025 BY THE REALTORS® ASSOCIATION OF EDMONTON. ALL RIGHTS RESERVED. Trademarks are owned or controlled by the Canadian Real Estate Association (CREA) and identify real estate professionals who are members of CREA (REALTOR®, REALTORS®) and/or the quality of services they provide (MLS®, Multiple Listing Service®)

Listing information last updated on October 5th, 2025 at 1:32am MDT