

\$109,000 - 403 1620 48 Street, Edmonton

MLS® #E4461204

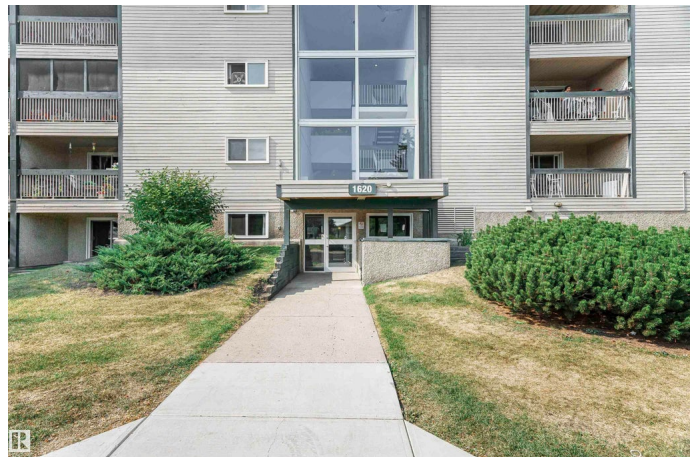
\$109,000

1 Bedroom, 1.00 Bathroom, 619 sqft

Condo / Townhouse on 0.00 Acres

Pollard Meadows, Edmonton, AB

Top-Floor One Bedroom Condo â€œ Affordable, Well-Maintained, and Move-In Ready. Donâ€™t miss this incredible opportunity to own a beautifully maintained top-floor one bedroom condo in a well-managed and established complex. Ideal for first-time buyers or savvy investors, this unit offers exceptional value with low purchase price and affordable condo fees. Step into a spacious, bright living room that opens onto a west-facing balcony â€œ perfect for relaxing and enjoying evening sunsets. The functional layout includes a generously sized bedroom, ample storage, and a well-appointed kitchen and bathroom. Located close to schools, shopping, transit, and with easy access to Anthony Henday Drive, commuting and daily errands are a breeze. This convenient location enhances both lifestyle and long-term investment potential. Whether youâ€™re looking to enter the market or expand your portfolio, this condo checks all the boxes. Schedule your viewing today â€œ opportunities like this donâ€™t last long!



Built in 1981

Essential Information

MLS® # E4461204

Price \$109,000

Bedrooms	1
Bathrooms	1.00
Full Baths	1
Square Footage	619
Acres	0.00
Year Built	1981
Type	Condo / Townhouse
Sub-Type	Apartment High Rise
Style	Multi Level Apartment
Status	Active

Community Information

Address	403 1620 48 Street
Area	Edmonton
Subdivision	Pollard Meadows
City	Edmonton
County	ALBERTA
Province	AB
Postal Code	T6L 5P1

Amenities

Amenities	On Street Parking
Parking Spaces	1
Parking	Stall

Interior

Appliances	Dishwasher-Built-In, Hood Fan, Refrigerator, Stove-Electric
Heating	Baseboard, See Remarks
# of Stories	4
Stories	1
Has Basement	Yes
Basement	None, No Basement

Exterior

Exterior	Wood, See Remarks
Exterior Features	Airport Nearby, Playground Nearby, Public Transportation, Schools, Shopping Nearby, See Remarks
Roof	Unknown
Construction	Wood, See Remarks

Foundation Concrete Perimeter

Additional Information

Date Listed October 5th, 2025
Days on Market 3
Zoning Zone 29
Condo Fee \$362

DATA IS DEEMED RELIABLE BUT IS NOT GUARANTEED ACCURATE BY THE REALTORS® ASSOCIATION OF EDMONTON. COPYRIGHT 2025 BY THE REALTORS® ASSOCIATION OF EDMONTON. ALL RIGHTS RESERVED.Trademarks are owned or controlled by the Canadian Real Estate Association (CREA) and identify real estate professionals who are members of CREA (REALTOR®, REALTORS®) and/or the quality of services they provide (MLS®, Multiple Listing Service®)
Listing information last updated on October 8th, 2025 at 3:02am MDT