

## \$399,900 - 527 Ebbers Way, Edmonton

MLS® #E4461437

**\$399,900**

3 Bedroom, 2.50 Bathroom, 1,339 sqft

Single Family on 0.00 Acres

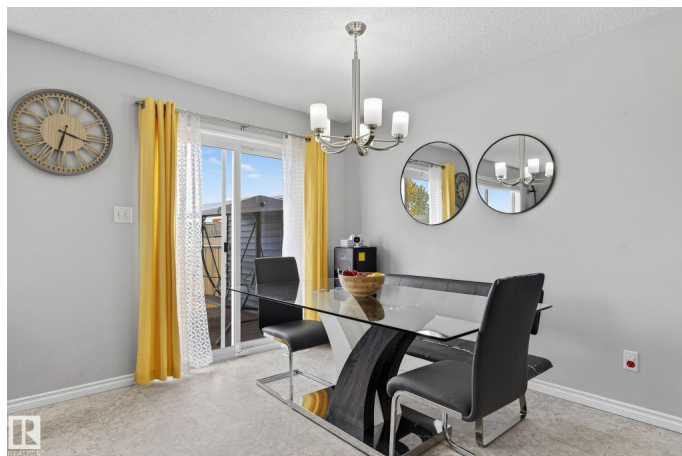
Ebbers, Edmonton, AB

Welcome to the quiet community of Ebbers! This beautiful home offers a spacious backyard with a composite deck and no direct rear neighbors - perfect for private gatherings, late-night chats, and summer BBQs. Enjoy a central location just 5-7 minutes from Manning Town Centre and Londonderry Mall for shopping, dining, and entertainment. Nearby are public and Catholic elementary schools (5 mins), junior high (6 mins), and high school (12 mins). Northeast Community Health Centre is also just a 5-minute drive away. Convenient transit access with bus stops throughout the community, nearby train stations, and quick routes to Anthony Henday Drive. Families and outdoor lovers will appreciate the close proximity to Ebbers Park and the Manning Off-Leash Dog Park. Don't miss this exceptional home combining privacy, convenience, and comfort!

Built in 2018

### Essential Information

MLS® #	E4461437
Price	\$399,900
Bedrooms	3
Bathrooms	2.50
Full Baths	2
Half Baths	1



Square Footage	1,339
Acres	0.00
Year Built	2018
Type	Single Family
Sub-Type	Half Duplex
Style	2 Storey
Status	Active

### Community Information

Address	527 Ebbers Way
Area	Edmonton
Subdivision	Ebbers
City	Edmonton
County	ALBERTA
Province	AB
Postal Code	T5Y 3T8

### Amenities

Amenities	On Street Parking, Carbon Monoxide Detectors, Detectors Smoke, No Animal Home, No Smoking Home
Parking Spaces	2
Parking	Single Garage Attached

### Interior

Interior Features	ensuite bathroom
Appliances	Dishwasher-Built-In, Dryer, Garage Control, Garage Opener, Microwave Hood Fan, Refrigerator, Stove-Electric, Washer, Window Coverings
Heating	Forced Air-1, Natural Gas
Stories	2
Has Basement	Yes
Basement	Full, Unfinished

### Exterior

Exterior	Wood, Vinyl
Exterior Features	Cross Fenced, Flat Site, Low Maintenance Landscape, Playground Nearby, Public Transportation, Schools, Shopping Nearby
Roof	Asphalt Shingles
Construction	Wood, Vinyl
Foundation	Concrete Perimeter

**Additional Information**

Date Listed           October 9th, 2025  
Days on Market       1  
Zoning                Zone 02

DATA IS DEEMED RELIABLE BUT IS NOT GUARANTEED ACCURATE BY THE REALTORS® ASSOCIATION OF EDMONTON. COPYRIGHT 2025 BY THE REALTORS® ASSOCIATION OF EDMONTON. ALL RIGHTS RESERVED.Trademarks are owned or controlled by the Canadian Real Estate Association (CREA) and identify real estate professionals who are members of CREA (REALTOR®, REALTORS®) and/or the quality of services they provide (MLS®, Multiple Listing Service®)  
Listing information last updated on October 10th, 2025 at 11:17am MDT