

## \$439,900 - 8815 76 Street, Edmonton

MLS® #E4461718

**\$439,900**

5 Bedroom, 2.00 Bathroom, 911 sqft

Single Family on 0.00 Acres

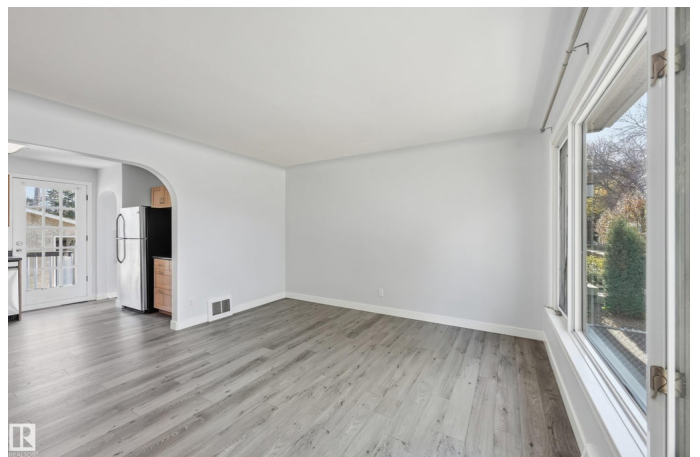
Idylwylde, Edmonton, AB

**\*\*This is HOME\*\***Centrally located UPDATED character home in Idylwylde! This bungalow sits on a corner lot and offers an open concept living space with a large backyard and fully finished basement. As you enter the bright living room it will make you feel right at home; few steps down is a small yet elegant dining area just steps from the kitchen. Kitchen looks out onto the backyard and offer plenty of counter space for cooking; 3 bedrooms and renovated full bath complete the main floor. The basement has a separate entrance for potential income suite and has received some updates including new flooring and paint; it offers 2 bedrooms, full bath, living room and laundry room. This property has RV parking, a large gazebo for late night hang outs and a double detached garage with plenty of extra parking. Walking distance to new LRT line and Bonnie Doon Mall. Located on a mature street with easy access to downtown and Whyte Avenue.

Built in 1952

### Essential Information

MLS® #	E4461718
Price	\$439,900
Bedrooms	5
Bathrooms	2.00



Full Baths	2
Square Footage	911
Acres	0.00
Year Built	1952
Type	Single Family
Sub-Type	Detached Single Family
Style	Bungalow
Status	Active

### Community Information

Address	8815 76 Street
Area	Edmonton
Subdivision	Idylwylde
City	Edmonton
County	ALBERTA
Province	AB
Postal Code	T6C 2K1

### Amenities

Amenities	Deck, Fire Pit, Parking-Extra, R.V. Storage
Parking	Double Garage Detached

### Interior

Appliances	Dishwasher-Built-In, Dryer, Hood Fan, Refrigerator, Stove-Electric, Washer
Heating	Forced Air-1, Natural Gas
Stories	2
Has Basement	Yes
Basement	Full, Finished

### Exterior

Exterior	Wood, Vinyl
Exterior Features	Fenced, Playground Nearby, Public Transportation, Schools, Shopping Nearby, Ski Hill Nearby
Roof	Asphalt Shingles
Construction	Wood, Vinyl
Foundation	Concrete Perimeter

### Additional Information

Date Listed            October 10th, 2025

Days on Market      1

Zoning                Zone 18

DATA IS DEEMED RELIABLE BUT IS NOT GUARANTEED ACCURATE BY THE REALTORS® ASSOCIATION OF EDMONTON. COPYRIGHT 2025 BY THE REALTORS® ASSOCIATION OF EDMONTON. ALL RIGHTS RESERVED. Trademarks are owned or controlled by the Canadian Real Estate Association (CREA) and identify real estate professionals who are members of CREA (REALTOR®, REALTORS®) and/or the quality of services they provide (MLS®, Multiple Listing Service®)

Listing information last updated on October 11th, 2025 at 1:32pm MDT