

\$449,900 - 8610 152b Avenue, Edmonton

MLS® #E4461826

\$449,900

4 Bedroom, 3.50 Bathroom, 1,911 sqft

Single Family on 0.00 Acres

Evansdale, Edmonton, AB

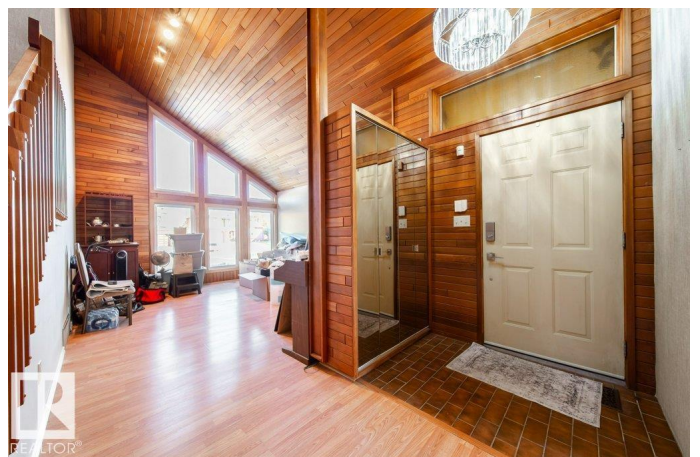
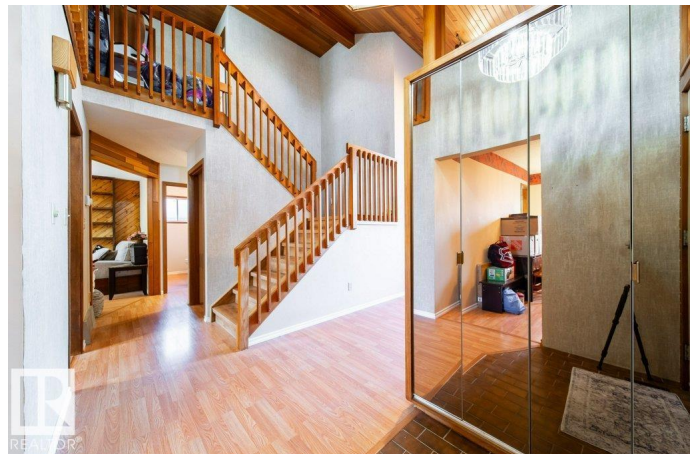
Great location! Nearby schools and parks. In quiet keyhole crescent. Perfect family home with beautiful south facing yard, over 1,911 sft + 881 sf finished basement, 3+1 Bedrooms, 4 Baths. Lots of Storage and Walk-in closets. Many major recent upgrades: Roof Shingles, Triple-pane Windows, Patio doors, Lightings, Rubber paved Driveway and Walkways, New Kitchen and Bathroom cabinets with Quartz countertops, Maintenance free Floorings in many rooms, hallway and stairs, Modern Appliances. Main floor with formal Living Room with high vaulted cedar ceiling, Family room with stone fireplace with fan, patio door with access to beautiful deck with gazebo. Dining Room next to Kitchen with Bay Breakfast Nook. Main floor Laundry Room with Walk-in closet. Upstairs Master Bedroom with Walk-in closet and 3 piece ensuite. Other Bedrooms with huge closets, one with Walk-in and storage. Basement with 4th bedroom and a 5th bedroom ready by just adding a wall in the huge Recreational Room. Quick possession is possible.

Built in 1982

Essential Information

MLS® # E4461826

Price \$449,900



Bedrooms	4
Bathrooms	3.50
Full Baths	3
Half Baths	1
Square Footage	1,911
Acres	0.00
Year Built	1982
Type	Single Family
Sub-Type	Detached Single Family
Style	2 Storey
Status	Active

Community Information

Address	8610 152b Avenue
Area	Edmonton
Subdivision	Evansdale
City	Edmonton
County	ALBERTA
Province	AB
Postal Code	T5E 6H2

Amenities

Amenities	On Street Parking, Deck, Detectors Smoke, Gazebo, Open Beam, Skylight, Vaulted Ceiling, Vinyl Windows
Parking Spaces	4
Parking	Double Garage Attached, Front Drive Access

Interior

Interior Features	ensuite bathroom
Appliances	Dishwasher-Built-In, Dryer, Fan-Ceiling, Garage Control, Garage Opener, Microwave Hood Fan, Refrigerator, Storage Shed, Stove-Electric, Washer
Heating	Forced Air-1, Natural Gas
Fireplace	Yes
Fireplaces	Heatilator/Fan, Mantel, Stone Facing
Stories	3
Has Basement	Yes
Basement	Full, Finished

Exterior

Exterior	Wood, Stucco, Vinyl
Exterior Features	Cul-De-Sac, Fenced, Landscaped, No Back Lane, Park/Reserve, Playground Nearby, Private Setting, Schools
Roof	Asphalt Shingles
Construction	Wood, Stucco, Vinyl
Foundation	Concrete Perimeter

School Information

Elementary	St.Philip, Evansdale
Middle	Card.Leger, Dickinsfield
High	O'Leary, Queen Elizabeth

Additional Information

Date Listed	October 9th, 2025
Days on Market	2
Zoning	Zone 02

DATA IS DEEMED RELIABLE BUT IS NOT GUARANTEED ACCURATE BY THE REALTORS® ASSOCIATION OF EDMONTON. COPYRIGHT 2025 BY THE REALTORS® ASSOCIATION OF EDMONTON. ALL RIGHTS RESERVED.Trademarks are owned or controlled by the Canadian Real Estate Association (CREA) and identify real estate professionals who are members of CREA (REALTOR®, REALTORS®) and/or the quality of services they provide (MLS®, Multiple Listing Service®)

Listing information last updated on October 11th, 2025 at 8:47pm MDT