

\$169,900 - 1226 West View Rise, Edmonton

MLS® #E4463273

\$169,900

3 Bedroom, 2.00 Bathroom, 1,221 sqft
Land Lease Community on 0.00 Acres

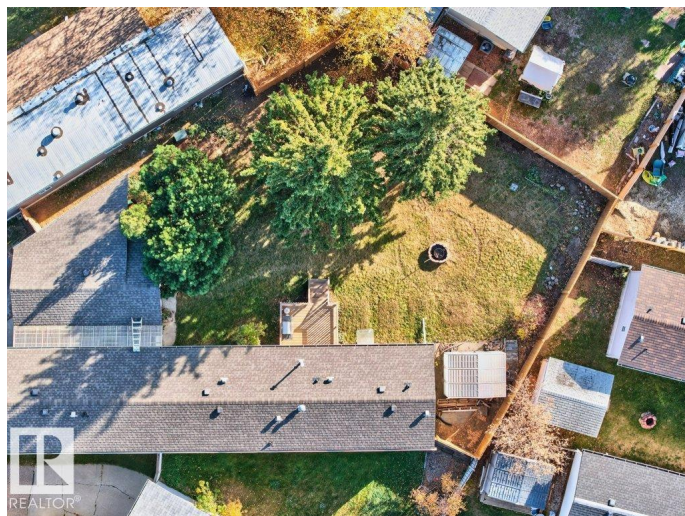
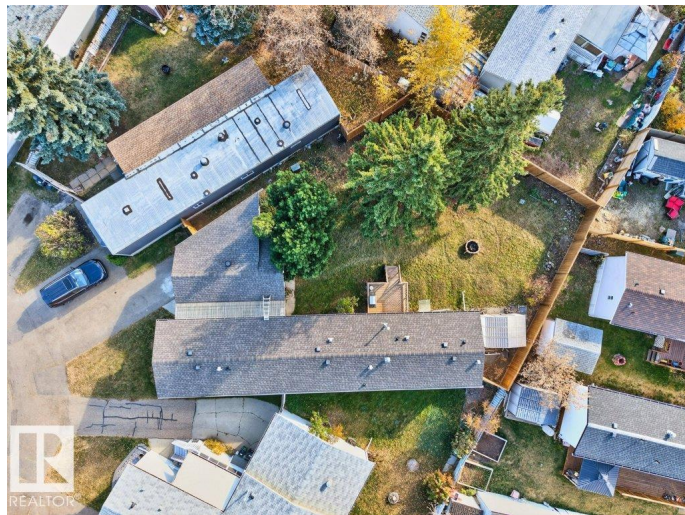
Westview Village, Edmonton, AB

Welcome home to this charming and well-kept 3-bedroom, 2-bathroom mobile home sitting on a generous lot with tons of upgrades and a beautifully treed backyard! Enjoy peace of mind with major updates already completed, including a new roof (2015), new furnace (2017), and a new main window (2022). In 2024, the property was leveled and enhanced with new heat tape, new skirting, and a brand-new washer and dryer. The oversized single detached garage offers plenty of space for parking and storage. Outdoor features include a brand-new fence (2025), new shed (2023), and a deck built in 2020—perfect for relaxing or entertaining. Inside, you’ll find a functional layout with vaulted ceilings, stainless steel appliances, and loads of cabinetry. The spacious primary suite boasts a walk-in closet and ensuite. Located in a quiet, established community with mature trees and a large backyard with a firepit, this property offers comfort, space, and incredible value!

Built in 1999

Essential Information

MLS® #	E4463273
Price	\$169,900
Bedrooms	3
Bathrooms	2.00



Full Baths	2
Square Footage	1,221
Acres	0.00
Year Built	1999
Type	Land Lease Community
Sub-Type	Detached Single Family
Style	Bungalow
Status	Active

Community Information

Address	1226 West View Rise
Area	Edmonton
Subdivision	Westview Village
City	Edmonton
County	ALBERTA
Province	AB
Postal Code	T5S 1T6

Amenities

Parking Spaces	2
Parking	Over Sized, Single Garage Detached

Interior

Interior Features	ensuite bathroom
Appliances	Dishwasher-Built-In, Dryer, Refrigerator, Stove-Electric, Washer
Heating	Forced Air-1, Natural Gas

Exterior

Exterior	Wood
Construction	Wood
Foundation	Piling

Additional Information

Date Listed	October 23rd, 2025
Days on Market	1
Zoning	Zone 59

DATA IS DEEMED RELIABLE BUT IS NOT GUARANTEED ACCURATE BY THE REALTORS® ASSOCIATION OF EDMONTON. COPYRIGHT 2025 BY THE REALTORS® ASSOCIATION OF EDMONTON. ALL RIGHTS RESERVED. Trademarks are owned or controlled by the Canadian Real Estate Association (CREA) and identify real estate professionals who are members of CREA (REALTOR®, REALTORS®) and/or the quality of services they

provide (MLS® , Multiple Listing Service®)

Listing information last updated on October 24th, 2025 at 8:18pm MDT