

# \$650,000 - 1330 1332 12 Avenue Sw, Calgary

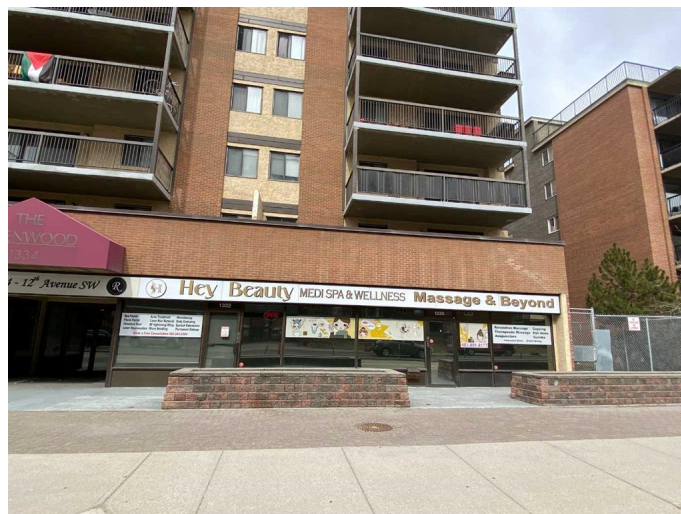
MLS® #A2124955

## \$650,000

0 Bedroom, 0.00 Bathroom,  
Commercial on 0.00 Acres

Beltline, Calgary, Alberta

Attractive retail property! It includes 2 condo units (1277 square feet) which are Mixed-Use Street level retail/commercial units on high density Location. Prime location, steps to shopping center, LRT station, school, and bus route. Bicycle path lane is just in front. It has bright and large open reception/admin area, 3 private offices, one fully renovated boardroom, a kitchenette, bathroom, and large storage space PLUS 2 assigned parking lots with lots of free street parking cross street. Currently, the income is very stable and tenant is very nice and well-known spa and wellness center. It is also an excellent location and layout for office, retail, clinic, studio, training center and other businesses. Good to buy and good to invest!!!!



Built in 1980

## Essential Information

MLS® #	A2124955
Price	\$650,000
Bathrooms	0.00
Acres	0.00
Year Built	1980
Type	Commercial
Sub-Type	Retail
Status	Active

## Community Information

Address	1330 1332 12 Avenue Sw
Subdivision	Beltline
City	Calgary
County	Calgary
Province	Alberta
Postal Code	T3C 0P5

### **Additional Information**

Date Listed	April 21st, 2024
Days on Market	193
Zoning	CC-X

### **Listing Details**

Listing Office	Century 21 Bamber Realty LTD.
----------------	-------------------------------

Data is supplied by Pillar 9â„¢ MLSÂ® System. Pillar 9â„¢ is the owner of the copyright in its MLSÂ® System. Data is deemed reliable but is not guaranteed accurate by Pillar 9â„¢. The trademarks MLSÂ®, Multiple Listing ServiceÂ® and the associated logos are owned by The Canadian Real Estate Association (CREA) and identify the quality of services provided by real estate professionals who are members of CREA. Used under license.