

\$585,000 - 328 Somerside Road Se, Medicine Hat

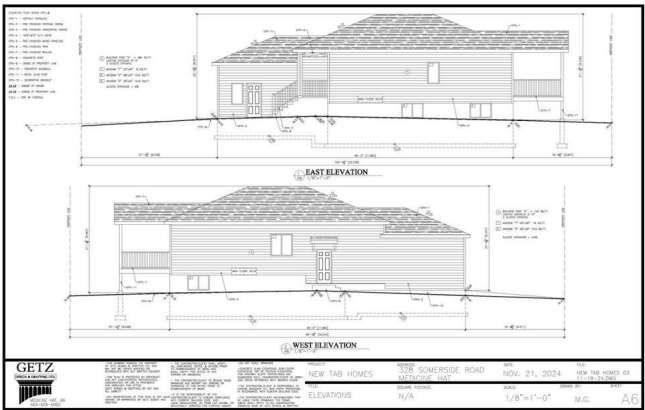
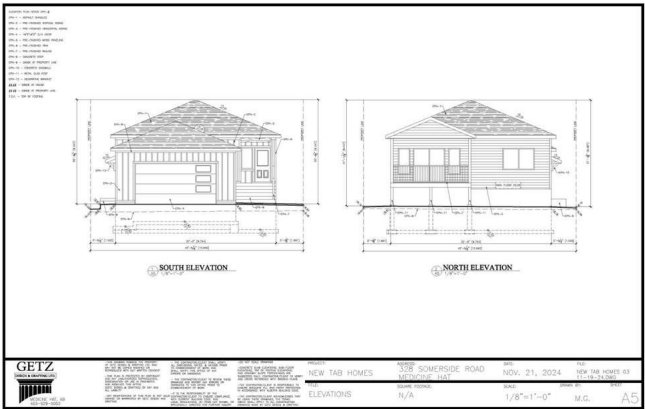
MLS® #A2192398

\$585,000

4 Bedroom, 3.00 Bathroom, 1,137 sqft
Residential on 0.10 Acres

Southland, Medicine Hat, Alberta

Are you looking for a brand-new home with a secondary Kitchen, a secondary Laundry room and a separate entrance? This is the one, 328 Somerside Road SE in Southlands of Medicine Hat. The estimate completion date is in September this year. It's a stunning bungalow. You'll have 2 sets of kitchens, 2 sets of laundry rooms and 2 sets of hot water on demands. New TAB HOMES LTD and DP76 CONSTRUCTION build this dream home that combines comfort, convenience, fashion and affordable. It's a great buy and suitable to all buyers, especially who has few generations, working young families would like a passive income for the mortgage and investors. This luxury and smart home has quartz countertops for the kitchens and the washrooms, vinyl planks flooring, and an attached double size garage. Don't miss out this opportunity to own a home that doesn't come on the market often. RMS square footage is based on builder plans.



Built in 2025

Essential Information

MLS® #	A2192398
Price	\$585,000
Bedrooms	4
Bathrooms	3.00
Full Baths	3
Square Footage	1,137

Acres	0.10
Year Built	2025
Type	Residential
Sub-Type	Detached
Style	Bungalow
Status	Active

Community Information

Address	328 Somerside Road Se
Subdivision	Southland
City	Medicine Hat
County	Medicine Hat
Province	Alberta
Postal Code	T1B 0R2

Amenities

Parking Spaces	4
Parking	Double Garage Attached
# of Garages	2

Interior

Interior Features	Ceiling Fan(s), Pantry, Quartz Counters
Appliances	Central Air Conditioner
Heating	Forced Air, Natural Gas, Electric
Cooling	Central Air
Has Basement	Yes
Basement	Exterior Entry, Finished, Full

Exterior

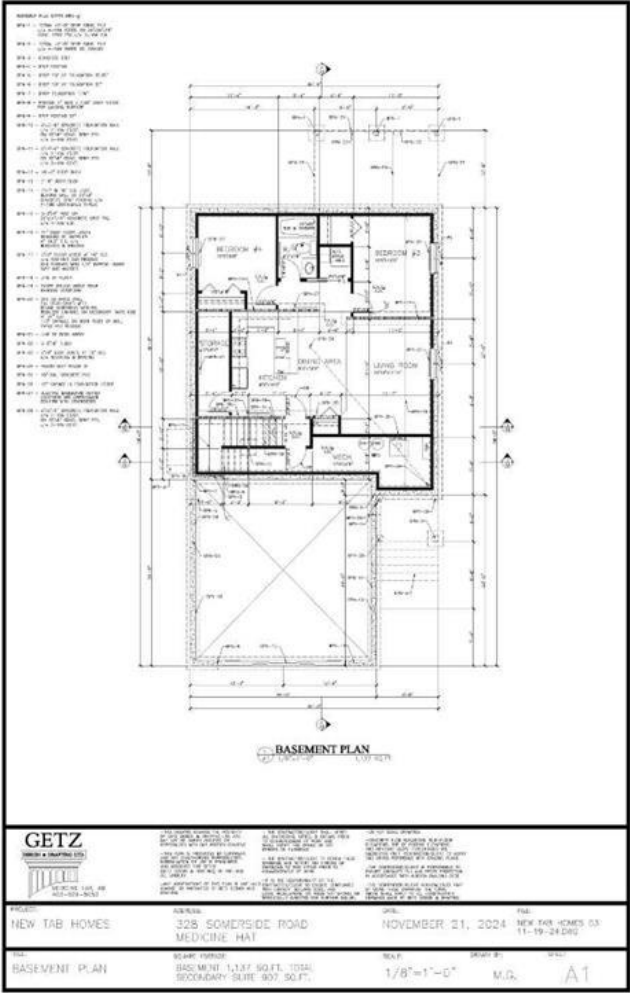
Exterior Features	Other
Lot Description	Back Lane, Back Yard, Front Yard, City Lot
Roof	Asphalt Shingle
Construction	Concrete, Vinyl Siding, Wood Frame
Foundation	Poured Concrete

Additional Information

Date Listed	February 4th, 2025
Days on Market	95
Zoning	RL

Listing Details

Listing Office ROYAL LEPAGE COMMUNITY



Data is supplied by Pillar 9â„¢ MLSÂ® System. Pillar 9â„¢ is the owner of the copyright in its MLSÂ® System. Data is deemed reliable but is not guaranteed accurate by Pillar 9â„¢. The trademarks MLSÂ®, Multiple Listing ServiceÂ® and the associated logos are owned by The Canadian Real Estate Association (CREA) and identify the quality of services provided by real estate professionals who are members of CREA. Used under license.