

\$1,149,000 - 22 Chelsea Bay, Chestermere

MLS® #A2206512

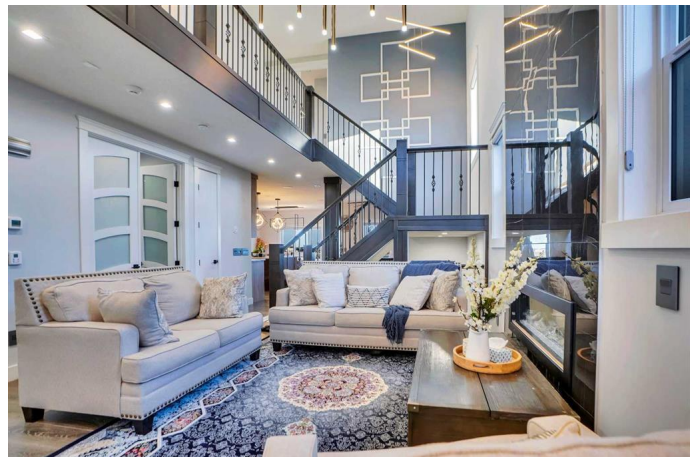
\$1,149,000

7 Bedroom, 6.00 Bathroom, 2,945 sqft

Residential on 0.15 Acres

Chelsea_CH, Chestermere, Alberta

WELCOME TO 22 CHELSEA BAY, ONE OF THE MOST UPGRADED HOME WITH STATE OF THE ART FINISHINGS ON THE STREET SITS ON A HUGE PIE SHAPE WALK OUT LOT , BACKS ONTO GREEN SPACE/FUTURE SCHOOL FIELD, OVER 4000 SQFT LIVEABLE AREA - 7 BEDS, 6 BATHS, BACKYARD/DECK AND PATIO, CUL DE SAC, ATTACHED 3 CAR GARAGE, AIR CONDITIONING! - Beautiful home with too many upgrades and elegant design including OPEN TO ABOVE SPACES - Walking into this home you are greeted with a large foyer that opens into a breathtaking living WITH FIRE PLACE BEAUTIFULLY TILED ALL THE WAY TO THE ROOM AND ELEGANT YET MODERN LGHTINGS THROUGHOUT THE WHOLE HOUSE, kitchen and dining space all in a OPEN FAMILY ROOM WITH FIREPLACE WALL FEATURE . The ELEGANT STARECASE is a focal point in this space and the main floor has an 3PC ENSUITE BEDROOM and additional 2PC bath. The OVER SIZED TRIPLE HEATED GARAGE GIVES YOU ENOUGH SPACE TO PARK YOUR VEHICLES AND TOYS . The living room has large OPEN TO ABOVE spaces and huge windows that bring in a lot of natural light. The kitchen is expansive with many BUILT IN STAINLESS STEEL appliances and a large ISLAND , huge spice kitchen for all the cooking for family events . This floor is complete with deck access that overlooks the GREEN SPACE THAT WILL BE A SCHOOL



FIELD. The upper level has 4 GENEROUS SIZE BEDROOMS WITH WALK IN CLOSETS, 3 BATHS, LAUNDRY AND HUGE BONUS ROOM WITH MODERN CABINETRY WALL UNIT . The primary bedroom has a private balcony and 5PC ensuite with a SOAK TUB and DOUBLE VANITY . Also one of the bedrooms has a 3PC ensuite. The WALK OUT BASEMENT has TWO BEDROOMS , BATHROOM , HUGE LIVING AREA. There is also a WET BAR and this space WALKS OUT onto a large PATIO with FENCED BACKYARD access. VERY CLEAN ,BEAUTIFUL HOME SHOWS BRAND NEW ,VERY WELL KEPT PROPERTY MINUTES TO THE CHESTERMERE LAKE AND SHOPPING ,SCHOOLS AND ALL AMENITIES .EV CHARGER ROUGH IN , HOT WATER TANK ROUGH IN TO THE BACKYARD , SMART HOME TECHNOLOGY THROUGHOUT , EXTRA LIGHTING, BEAUTIFUL SOLID HOME IS PERFECT FOR GRWOING FAMILY WITH ENOUGH SPACE FOR EVERYONE

Built in 2020

Essential Information

| | |
|----------------|-------------|
| MLS® # | A2206512 |
| Price | \$1,149,000 |
| Bedrooms | 7 |
| Bathrooms | 6.00 |
| Full Baths | 5 |
| Half Baths | 1 |
| Square Footage | 2,945 |
| Acres | 0.15 |
| Year Built | 2020 |
| Type | Residential |
| Sub-Type | Detached |
| Style | 2 Storey |
| Status | Active |

Community Information

| | |
|-------------|----------------|
| Address | 22 Chelsea Bay |
| Subdivision | Chelsea_CH |
| City | Chestermere |
| County | Chestermere |
| Province | Alberta |
| Postal Code | T1X 1Z3 |

Amenities

| | |
|----------------|--|
| Parking Spaces | 3 |
| Parking | Heated Garage, Triple Garage Attached, Driveway, Oversized |
| # of Garages | 3 |

Interior

| | |
|-------------------|---|
| Interior Features | Chandelier, High Ceilings, Kitchen Island, No Animal Home, No Smoking Home, Open Floorplan, Quartz Counters, Bar, Smart Home, Separate Entrance |
| Appliances | Dishwasher, Gas Cooktop, Microwave, Refrigerator, Washer/Dryer, Oven-Built-In, Electric Cooktop |
| Heating | Forced Air, High Efficiency |
| Cooling | Central Air |
| Fireplace | Yes |
| # of Fireplaces | 2 |
| Fireplaces | Electric, Gas, Tile |
| Has Basement | Yes |
| Basement | Finished, Full, Walk-Out |

Exterior

| | |
|-------------------|---------------------------------------|
| Exterior Features | Balcony, Private Yard |
| Lot Description | Back Yard, Cul-De-Sac, Pie Shaped Lot |
| Roof | Asphalt Shingle |
| Construction | Concrete, Stone, Wood Frame |
| Foundation | Poured Concrete |

Additional Information

| | |
|----------------|------------------|
| Date Listed | March 28th, 2025 |
| Days on Market | 81 |
| Zoning | r1 |

Listing Details

| | |
|----------------|--------------------|
| Listing Office | Royal LePage METRO |
|----------------|--------------------|

Data is supplied by Pillar 9â„¢ MLS® System. Pillar 9â„¢ is the owner of the copyright in its MLS® System. Data is deemed reliable but is not guaranteed accurate by Pillar 9â„¢. The trademarks MLS®, Multiple Listing Service® and the associated logos are owned by The Canadian Real Estate Association (CREA) and identify the quality of services provided by real estate professionals who are members of CREA. Used under license.