

# \$579,900 - 132 Erin Circle Se, Calgary

MLS® #A2208019

**\$579,900**

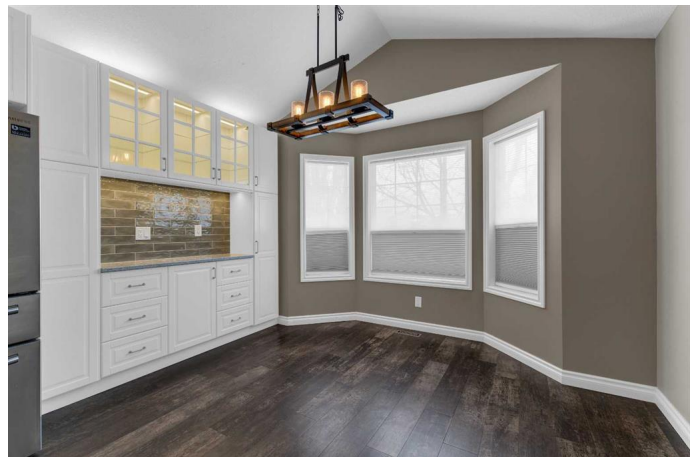
3 Bedroom, 3.00 Bathroom, 1,655 sqft

Residential on 0.12 Acres

Erin Woods, Calgary, Alberta

Welcome to your dream home in a surprisingly central and quiet neighbourhood! Located just 15 minutes from downtown, 5 minutes to the ring road, and 7 minutes to Deerfoot, you'll enjoy the perfect balance of convenience and peace. The friendly neighbours create a welcoming community where everyone knows each other, and some even shovel your sidewalks for you.

Additional features include: Central, peaceful, and close to major roadways for easy access to everything you need. Upgraded Roof: Featuring a Malarkey rubber shingle roof that's hail-proof with a 40-year guarantee (about 30 years remaining), offering peace of mind for years to come. Recent Upgrades: In 2019, the home received a new hot water tank, furnace, and central AC, as well as a high-quality MERV 5-inch air filter – perfect for those with asthma or anyone wanting top-notch air quality. Kitchen: Only 5 years old, the kitchen boasts stunning cabinetry, tons of storage, and hidden drawers, making it both functional and stylish. Unique Wine Cellar/Cold Storage: In the basement bedroom, a built-in nook serves as a cold storage area, previously used as a small wine cellar. It was cleverly designed with bookcases on wheels, creating a secret hideaway feel. Master Bathroom: A one-of-a-kind custom bathroom you won't find anywhere else! Double sinks, ample storage, a luxurious shower, and a spacious tub make this a perfect retreat. Huge Yard: At 5500 square feet, this pie-shaped lot offers



one of the largest yards in the area, ideal for outdoor activities or future development. Hot Tub Ready: This home is wired for a hot tub, complete with 220 AMP wiring and a 10x10 pit already developed for your future relaxation area. Kitchen Wiring: Each plug in the kitchen is on its own breaker, and all plugs are on 20 AMP circuits (instead of the standard 15 AMP), ensuring that youâ€™ll never blow a fuse while cooking or entertaining. Beautiful Landscaping: Enjoy fruit-bearing trees including a new cherry tree, a hawthorn berry tree (known for its health benefits), a fragrant lilac tree, and an abundance of raspberries. Storage Shed: A nearly new 10'x12' shed, just 2 years old, perfect for storing tools, toys, or outdoor equipment. This home is truly special and ready for you to make your own! The peaceful neighbourhood, combined with thoughtful upgrades and a large yard, make this the perfect place for you and your family. Donâ€™t miss your chance to view it!

Built in 1996

**Essential Information**

MLS® #	A2208019
Price	\$579,900
Bedrooms	3
Bathrooms	3.00
Full Baths	2
Half Baths	1
Square Footage	1,655
Acres	0.12
Year Built	1996
Type	Residential
Sub-Type	Detached
Style	4 Level Split
Status	Active

**Community Information**

Address	132 Erin Circle Se
Subdivision	Erin Woods
City	Calgary
County	Calgary
Province	Alberta
Postal Code	T2B 3H8

### **Amenities**

Parking Spaces	2
Parking	Double Garage Detached
# of Garages	2

### **Interior**

Interior Features	See Remarks
Appliances	Central Air Conditioner, Dishwasher, Dryer, Refrigerator, Stove(s), Washer
Heating	Forced Air
Cooling	Central Air
Fireplace	Yes
# of Fireplaces	1
Fireplaces	Gas
Has Basement	Yes
Basement	Finished, Full

### **Exterior**

Exterior Features	Dog Run
Lot Description	Pie Shaped Lot
Roof	Rubber
Construction	Vinyl Siding, Wood Frame
Foundation	Poured Concrete

### **Additional Information**

Date Listed	April 3rd, 2025
Days on Market	49
Zoning	R-CG

### **Listing Details**

Listing Office	Real Estate Professionals Inc.
----------------	--------------------------------

Data is supplied by Pillar 9â„¢ MLS® System. Pillar 9â„¢ is the owner of the copyright in its MLS® System. Data is

deemed reliable but is not guaranteed accurate by Pillar 9â„¸. The trademarks MLS®®, Multiple Listing Service® and the associated logos are owned by The Canadian Real Estate Association (CREA) and identify the quality of services provided by real estate professionals who are members of CREA. Used under license.