

# \$419,900 - 711 14 Street S, Lethbridge

MLS® #A2216650

**\$419,900**

3 Bedroom, 2.00 Bathroom, 928 sqft

Residential on 0.16 Acres

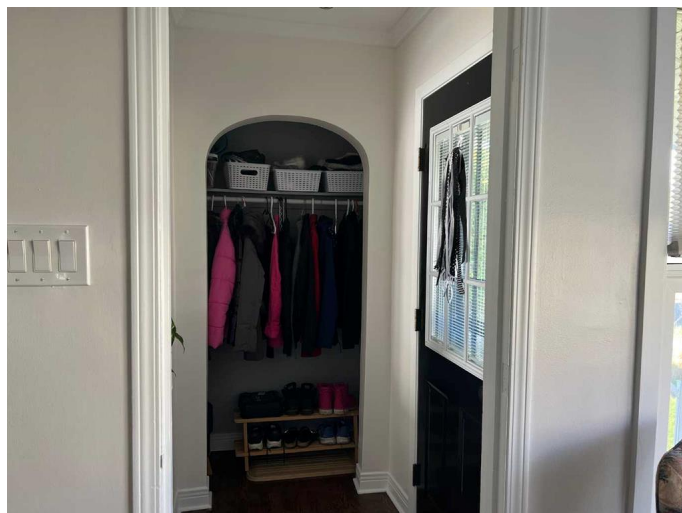
Victoria Park, Lethbridge, Alberta

This home is cuuuute!!! It's located in a wonderful quiet neighborhood, offers functionality, and is very well kept. Hardwood floors, granite counter tops, gas stove, A/C, single detached garage, extra parking in the rear, new flooring in the kitchen are just some of the wonderful perks this home has to offer. 2 bedrooms up with a full bath, and another bedroom and full bath down stairs finish this home off. The basement offers a walk out basement/separate entrance which may offer some flexibility and options for anyone looking to use their imagination. The backyard is large and offers a nice private little courtyard area on the side of the house, perfect for visiting. A deck and big lawn area are perfect for children, the avid gardener or someone who just appreciates a large backyard. This home will not disappoint, it's a must see!!

Built in 1946

## Essential Information

MLS® #	A2216650
Price	\$419,900
Bedrooms	3
Bathrooms	2.00
Full Baths	2
Square Footage	928
Acres	0.16
Year Built	1946



Type	Residential
Sub-Type	Detached
Style	Bungalow
Status	Active

### Community Information

Address	711 14 Street S
Subdivision	Victoria Park
City	Lethbridge
County	Lethbridge
Province	Alberta
Postal Code	T1J 2Y4

### Amenities

Parking Spaces	2
Parking	Off Street, Single Garage Detached
# of Garages	1

### Interior

Interior Features	Crown Molding, Granite Counters, No Smoking Home, Open Floorplan, Pantry, Separate Entrance
Appliances	Central Air Conditioner, Dishwasher, Dryer, Gas Stove, Refrigerator, Washer, Window Coverings
Heating	Forced Air
Cooling	Central Air
Has Basement	Yes
Basement	Exterior Entry, Finished, Full, Walk-Out

### Exterior

Exterior Features	Courtyard, Private Yard
Lot Description	Back Lane, Back Yard, Landscaped, Street Lighting
Roof	Asphalt Shingle
Construction	Vinyl Siding
Foundation	Poured Concrete

### Additional Information

Date Listed	May 5th, 2025
Days on Market	6
Zoning	R-L

**Listing Details**

Listing Office                      Lethbridge Real Estate.com

Data is supplied by Pillar 9â„¢ MLS® System. Pillar 9â„¢ is the owner of the copyright in its MLS® System. Data is deemed reliable but is not guaranteed accurate by Pillar 9â„¢. The trademarks MLS®, Multiple Listing Service® and the associated logos are owned by The Canadian Real Estate Association (CREA) and identify the quality of services provided by real estate professionals who are members of CREA. Used under license.